

Checkers

2013 English Open

Bristol

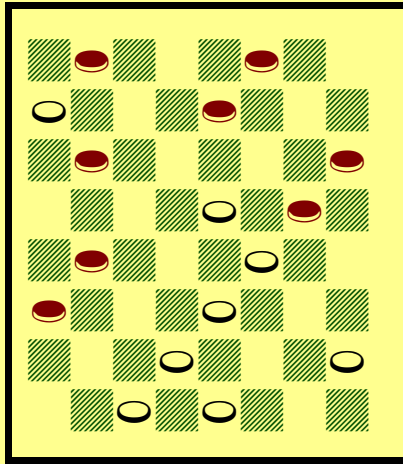


Diagram 74: Black wins

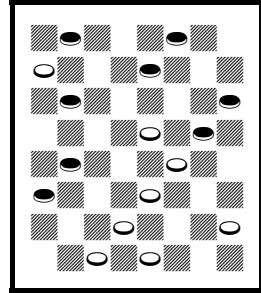
(See the game on page 33, after note K, for the solution)

© Copyright 2019, Jim Loy

**2013 English Open
Bristol**

Games annotated by Jim Loy

This is the diagram that is on the cover of this book. A. C. Rose made the winning move on page 32 (after note K, diagram on p. 33), of this book. I would like to thank John Reade for sending me these games, and for his support. Shane McCosker won this tournament. Several scoresheets were missing or unreadable. And there were relatively few draws, a sign that there were probably some one-sided games. I have composed 145 diagrams, especially in the section B games, as their mistakes are both educational and interesting. Browse through them, and just ask yourself, “Would I have played the right move?” Very often, I’m sure that I would not. And so, many of these diagrams (and some of the errors before and after the diagrams) will make excellent problems for study. Of course the entire games of the top players are worth studying, too. I hope you enjoy this booklet. Please report any errors to jimloy76@gmail.com.



74. Black wins

A Section	
1. Shane McCosker	30
2. Francis McNally	27
3. Colin Young	23
4. Lindus Edwards	20
5. Tony Boyle	19
6. Billy Kelly	15
7. John Morgan	14
8. Sean McElkenney	13
9. Con Boyle	11
10. Jimmy O'Brien	8

B Section	
1. Graham Young	27
2. A. C.. Rose	27
3. Brian Poole	26
4. John Jolliff	26
5. Ian Caws	21
6. Leo Springer	18
7. Keith Foubister	14
8. Terry Bedlow	11
9. Joan Caws	10

Round 1

1. Shane McCosker – John Morgan, 2013 English Open, Round 1

11-15 23-19 8-11 21-17(A) 9-13 25-21?(B) 5-9(C) 27-23 {diagram}
11-16!(D) 24-20(E) 15-24 20-11 7-16 28-19 10-14 17-10 6-24 32-28(F)
24-27(G) 31-24 16-20 24-19 20-24 23-18 24-27 21-17 27-31 17-14 4-8(H)
14-5 13-17 22-13 31-24 28-19 8-11 29-25 3-7 25-22 7-10 30-26 11-15
22-17 15-24 26-22 24-27 22-18 27-31 18-14 31-26 14-7 2-11 17-14 26-22
14-10 22-17 10-7 17-14 13-9 11-16 7-3 16-20 3-7 20-24 BW

A – Unusual.

B – Into the Laird and Lady Refused in *Lees' Guide*. 17-14 draw, toward the Black Doctor.

C – 4-8? draw Published Play.

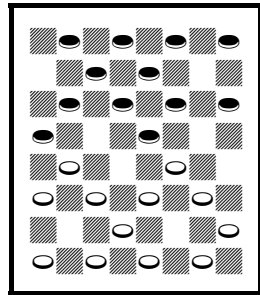
D – See the diagram. This may be stronger than the published 9-14 BW, W. Hay, 1838, which is also featured in *Lees' Guide* p.94 v.2.

E – 23-18 16-23 26-19 1-5 or 3-8 BW.

F – Others may offer a small amount of hope.

G – 16-19?? draws.

H – Better than 1-5 BW.



1. Black wins

2. John Morgan – Shane McCosker, 2013 English Open, Round 1

11-15 23-19 8-11 22-17 4-8(A) 25-22 9-14(B) 17-13 14-18 29-25
{diagram} 5-9?(C) 26-23 1-5(D) 23-14 9-18 21-17 11-16 17-14 16-23
31-26(E) 10-17 26-1 17-26 30-14 8-11 24-19 11-16 25-21 16-23 27-18
12-16 28-24 16-20 24-19 WW

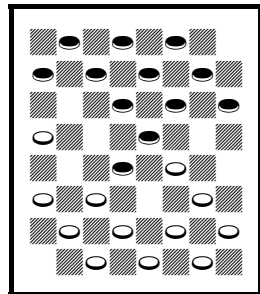
A – Old 14th.

B – 9-13 draw Published Play.

C – See the diagram. This is a published loss. 11-16 draw, W. Payne g.17.

D – 9-14 WW, J. Sturges g.16 v.1.

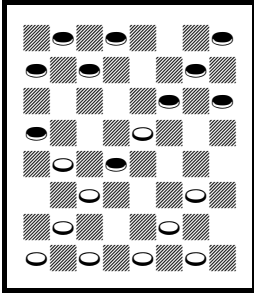
E – WW, A. Clow, *Winning Checkers*, vol. 2 v.111.



2. Black draws

3. Francis McNally - Tony Boyle, 2013 English Open, round 1

10-14 23-19 7-10 19-15(A) 11-18 22-15 10-19 24-15 14-18(B) 26-22(C)
 3-7(D) 28-24 7-11?(E) 21-17(F) 9-13(G) {diagram} 24-19?(H) 11-16?(I)
 15-11! 16-23 22-15 13-22 27-18 5-9 {diagram} 31-27?(J) 1-5 32-28(K)
 2-7 11-2 9-13 2-9 5-32 25-18 32-27 15-10 27-23 18-14 23-18 10-7 18-9 7-3
 9-14 29-25 14-10 25-22 10-15 28-24 8-11 24-20 11-16 20-11 15-8 BW



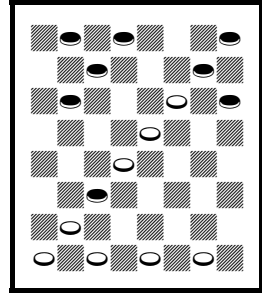
3. White wins

A – The standard attack. 27-23 is also good.

B – Unusual. M. Tinsley played this once. 8-11 draw published play.

C – 21-17 draw Published Play, as in *Basic Checkers*.

D – 12-16 should draw, J. Caldwell –



4. White wins

E. King, 1981 I-D.

E – 7-10 draw, KingsRow.

F – 22-17 may also win.

G – 2-7 17-13 WW?

H – See the first diagram. Instead, allow a shot with 17-14! 13-17 22-13 6-9 13-9 1-28 14-10 WW.

I – Loses. 2-7 17-14 18-23 27-18 6-10 draw.

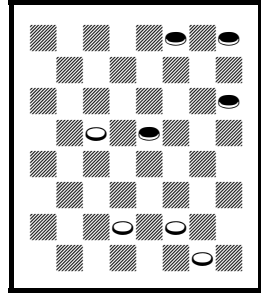
J – See the second diagram. This loses. 25-21! 6-10 15-6 8-15 18-11 1-10 21-17! (or 32-27 or 32-28 WW) 9-13! 32-27 12-16 27-23 16-20 23-19 or 23-18 WW, as the piece on 22 appears to be doomed.

K – Losing the fastest way.

4. Jim O'Brien – Colin Young, 2013 English Open, round 1

10-14 22-17 14-18 23-14 9-18 26-23!(A) 6-9 23-14 9-18 30-26 5-9
 26-23(B) 9-14 17-10 7-14 25-22(C) 18-25 29-22 11-15 24-19 15-24 28-19
 8-11 22-18 1-6(D) 18-9 6-13 19-15 11-18 23-14 13-17 31-26 2-6* 14-10
 6-15 21-14 {diagram} 4-8?(E) 14-10 12-16 10-6 15-19 6-2 16-20 32-28
 8-11 2-6 3-8 6-10 8-12 10-7 11-16 27-23 20-24 7-11 WW

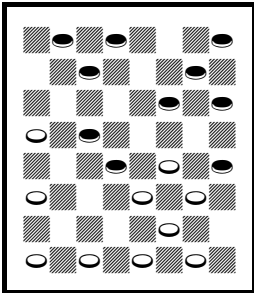
- A – This or 17-13 (in the next game) are strong.
- B – 17-14 draw Published Play.
- C – 24-19 draw Published Play.
- D – 1-5 draw, J. Gibson – A. Kandaruoov, 1990 US National.
- E – See the diagram. 3-7* 14-9 7-10 draw.



5. Black draws

5. Colin Young – Jim O’Brien, 2013 English Open, round 1

10-14 22-17 14-18 23-14 9-18 17-13! 5-9 21-17 9-14?(A) 17-10 7-14 24-19(B) 3-7 26-23!(C) 11-16 28-24! 16-20 25-21 7-11 {diagram} 29-25?(D) 11-16* 31-26 8-11* 19-15 4-8 24-19(E) 20-24 27-20 18-27 32-23 11-27 20-4 27-31 25-22 31-27 13-9?(F) 6-13 4-8 {diagram} 27-24?(G) BW(H)



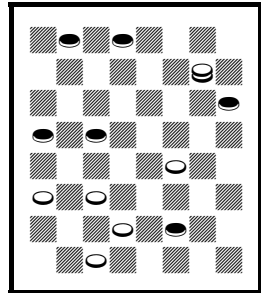
6. White wins

A – *Basic Checkers* says that 11-15 draw is the only way.

B – 25-21 WW Published Play.

C – 28-24 may also win, W. Dobbins – W. Leggett, 1995 English Open.

D – See the first diagram. 31-26 11-15 (11-16 26-22!



7. Black wins

WW) 19-10 6-15 29-25 WW.

E – 15-10 may be safer.

F – 19-15 6-9 13-6 1-19 4-8 or 22-17 draw.

G – See the second diagram. Perhaps the moves played were 27-23 19-15 23-18 BW.

H – Continue 19-15 14-18 30-25 1-6 (24-19?? 8-11 WW) draw.

6. Lindus Edwards – Con Boyle, 2013 English Open, round 1

11-16 22-18 7-11 18-14 10-17 21-14 9-18 23-14 3-7 25-21 6-9 26-23 9-18
23-14 1-6 31-26 11-15 29-25(A) 16-19 21-17 6-9 25-21 9-18 26-23
draw(B)

A – 21-17 draw, W. Hellman – D. Oldbury, 1965 WCM g.9.

B – R. Williams – Palmer, 1949 *Badger Checker Player*, g.256. The position is perhaps an easy draw, but White has continued and won, in a couple of games.

7. Con Boyle – Lindus Edwards, 2013 English Open, round 1

11-16 22-18 7-11 24-19(A) 3-7 28-24 16-20 32-28(B) 9-14(C) 18-9 5-14
19-16 12-19 23-16 8-12* 25-22 12-19 24-8 4-11 22-17 11-15 29-25 7-11*
26-23 15-18 17-13 10-15* {diagram} 23-19(D) 15-24 28-19 6-9 13-6 2-9*
19-16 1-5(E) 16-7 18-22 25-18 14-32 7-2 9-14 2-6(F) 14-18 6-10 draw(G)

A – = 11-16 24-19 7-11 22-18.

B – 25-22 draw Published Play.

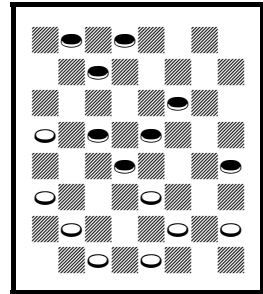
C – 11-16 should draw, E. Bruch – P. Davis, 1982 US National.

D – See the diagram. 21-17 14-21 23-14 15-18* draw.

E – 11-15? loses.

F – 30-26 14-18 2-6 32-27* draw.

G – Continue 32-27* draw. Good game.



8. White draws

8. Sean McElkenny – Billy Kelly, 2013 English Open, round 1

9-14 22-18 10-15 18-9 5-14 26-22(A) 7-10?(B) 22-18 15-22 25-9 6-13
29-25!(C) {diagram} 11-15 25-22 10-14(D) 31-26(E) 2-6 23-18 14-23
26-10 6-15 27-23 3-7 24-19(F) 15-24 28-19 8-11 {diagram} 22-18?(G)
7-10?(H) 18-14?(I) 10-17 21-14 13-17 14-10 17-22?(J) {diagram}
23-18?(K) 11-16 19-15 16-19 10-7 12-16* 7-3 22-26 30-23 19-26 15-11
16-19 3-7 draw

A – = 10-15 23-18 9-14 18-9 5-14 26-23 in *Basic Checkers*. 25-22 draw Published Play.

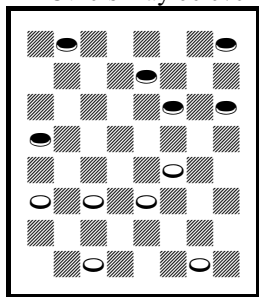
B – A published loss, and we enter an amazing kind of twilight zone of difficult positions, difficult for both players. 15-18 draw Published Play.

C – Much better than 24-19? which was played in *Basic Checkers*. See the first diagram after this move.

D – 8-11 WW, G. Arnold – G. Zuber, *Wood's Checker Studies*.

E – KingsRow plays 30-26 WW.

F – Others may be even stronger.



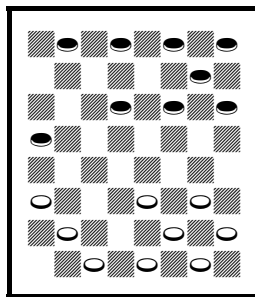
10. White wins

G – See the second diagram. 21-17 1-6 23-18 6-10 30-26 WW, winning a piece.

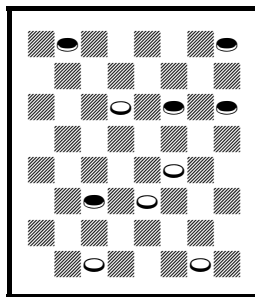
H – 1-6 or others draw.

I – 30-26 11-16 26-22 4-8 21-17 8-11 32-28 16-20 18-14 WW.

J – 11-15 draw.



9. Black moves



11. White wins

K – See the third diagram.

10-7 22-26 7-2 26-31 23-18 11-16 19-15 16-19 2-7 WW, winning the bridge ending.

9. Billy Kelly – Sean McElkenny, 2013 English Open, round 1

9-14 22-18 10-15 18-9 5-14 26-22 6-9(A) 22-17 7-10 17-13(B) 2-6 24-20(C) 12-16?(D) {diagram} 30-26(E) 15-18!(F,G) 25-22 18-25 29-22 8-12 22-17 3-7 {diagram} 28-24?(H) 4-8* 32-28?(I) 1-5 BW

A – Probably draws, but may be somewhat difficult. 15-18 draw Published Play.

B – 30-26 11-16 17-13 16-19 13-6 2-9 23-16 12-19 24-20 White better, KingsRow, with 8-12* next.

C – 30-26 should draw, I. Hinson – P. Dayton, 1981 I-D Mail Ty.

D – This leaves a mess for the players to clean up. 1-5 or 3-7 draw,

KingsRow.

E – See the first diagram. 25-22! (this may be an easier win?) 15-18 22-15 10-26 30-23 1-5 (or 8-12 WW) 29-25 (or 31-26 WW) 14-18 23-14 9-18 27-23 (or 31-26 WW) 18-27 32-23 3-7 31-27 (or 28-24 WW) 5-9 28-24 WW, and the computer predicts that White will soon be nine pieces ahead, which may be computer humor, as White has only seven pieces.

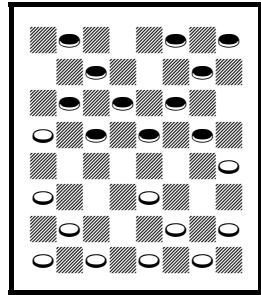
F – 8-12 (perhaps the most difficult path to calculate) 25-22! 3-7 27-24

(others may win) 16-19 23-16 12-19 22-17 (20-16 may win) 14-18! 20-16 (17-14 actually gives Black some hope) 11-27 32-5 19-24 WW, as White's piece on 26 may head for 9.

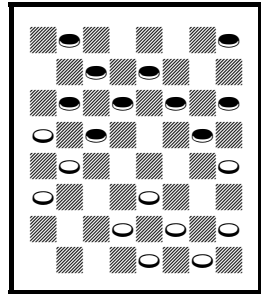
G – 1-5 25-22 3-7 22-17 (22-18? draws) 8-12 29-25 4-8 (16-19 WW) 27-24 14-18 (16-19 WW) 23-14 9-18 17-14 (26-23 also wins) 10-17 21-14 16-19 25-21 18-23 26-22 WW.

H – See the second diagram. 26-22! 4-8 22-18 16-19 23-16 14-23 27-18 12-19 31-26! WW. After 28-24?, both players have difficult problems to solve.

I – 26-22* 16-19* 23-16* 12-28 27-23* 11-15* 31-27* 8-11 or 15-18 or 15-19 draw.



12. White wins



13. White wins

10. Keith Foubister – Brian Poole, 2013 English Open, round 1

10-14 23-19 11-16 27-23(A) 8-11(B) 24-20 6-10 22-18(C) 3-8(D) 28-24 9-13 18-9 5-14 25-22 11-15 20-11 7-16 32-28 1-5(E) 22-18?(F) 15-22 26-17 13-22 24-20 {diagram} 8-11?(G) 30-25 2-7 25-9 5-14 29-25 14-17 21-14 10-17 25-22 17-26 31-22 7-10 22-18 4-8 28-24 WW

A – 26-23 draw was featured in *Basic Checkers*.

B – 16-20 is the most popular move.

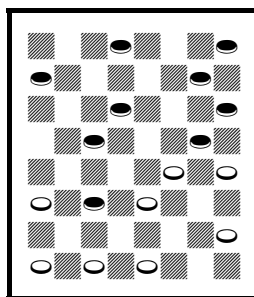
C – 32-27 should draw, J. Kear – G. Bonar, 1910 England v. Scotland.

D – 11-15 20-11 15-22 25-18 7-16 26-22 or 29-25 draw, KingsRow.

E – 16-20 may be stronger.

F – 22-17 (30-25? 16-20 BW, P. Howden – H. Owen, 1982 Lakeside) 13-22 26-17 16-20 draw, KingsRow.

G – See the diagram. 14-18! 23-7 2-11 BW, as Black gets to keep his extra piece.



14. Black wins

11. Brian Poole – Keith Foubister, 2013 English Open, round 1

10-14 23-19 11-16 19-15 14-18(A) 21-17

16-19(B) 17-13(C) 9-14 24-20 5-9 {diagram}

22-17?(D) 14-21 26-23 19-26 30-5 21-30 31-26

30-23 27-18 7-10 29-25 10-19 BW

A – 16-20 draw Published Play.

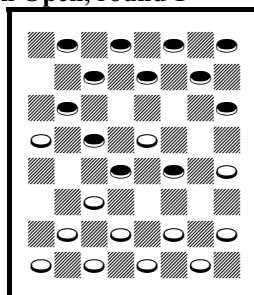
B – 9-13? draws in *Master Play* p.196 v.8F, but continue 26-23 WW?

C – 17-14 draw, KingsRow.

D – See the diagram. This is a losing shot.

25-21* 18-25 29-22 14-18 22-17* 18-22 15-10*

6-15* 13-6 2-9* 17-13* draw.



15. White draws

12. Ian Caws – Joan Caws, 2013 English Open, Rd 1

9-13 24-20 11-16(A) 20-11 8-15(B) 22-17(C) 13-22 25-11 7-16 29-25(D)

4-8 25-22 16-20(E) 28-24 8-11 24-19 {diagram} 11-16?(F,G) 22-18

10-14(H) 18-9 5-14 26-22(I) 6-10 22-18 1-5 18-9 5-14 30-25!(J) 3-7

25-22* 2-6 22-17 7-11 17-13 11-15 {diagram} 32-28?(K) 15-24 28-19

14-18 23-7 16-32 7-2 6-10 2-7 10-15 7-11 15-19 draw(L)

A – The Twilight Zone, one of the weak openings.

B – T. Canning and R. Pask recommend 7-16! draw.

C – 23-18! White strong, Published Play.

D – Seems to be the most popular move here.

E – 8-11 draw Published Play.

F – See the first diagram. 11-15 19-16 12-19 23-16 2-7* 27-23 6-9* 23-18 15-19 18-15 19-24 15-6 1-10 16-12 (22-18 9-14 draw) 9-14 22-18 draw, even though R. Little may have resigned here (R. Little – W. Savage, 1988 I-D).

G – Again, see the first diagram. 2-7 (drew twice in the 1988 I-D) 23-18! (other moves have been played here) 5-9* 26-23 9-13* 31-26 10-15 or 11-16 draw.

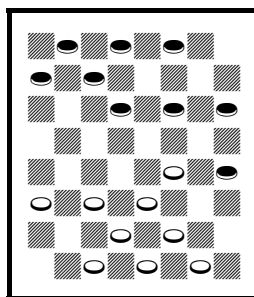
H – 5-9 18-15 3-8 26-22 9-13 23-18! 16-23 15-11 WW.

I – 19-15 also wins.

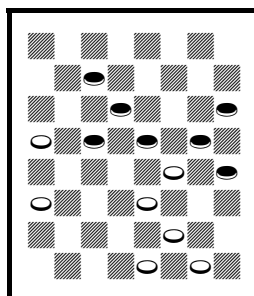
J – 31-26? should draw, K. Shearer – R. Pronk, 2003 Minnesota Ty. from 11-16 23-18 8-11.

K – See the second diagram. 27-24 20-27 31-24 16-20 32-27 15-18 21-17 WW

L – Good game by Mrs. Caws, even with her fumble near the end.



16. Black draws



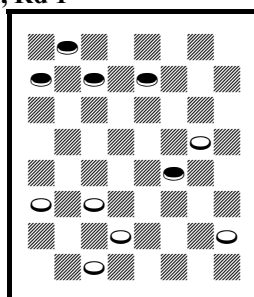
17. White wins

13. Joan Caws – Ian Caws, 2013 English Open, Rd 1

9-13 24-20 11-16 20-11 8-15 22-17 13-22 25-11 7-16 29-25 4-8 25-22 16-19?(A) 23-16 12-19 27-23 8-12 23-16 12-19 32-27 3-8 27-23 8-12 23-16 12-19 31-27 2-7 27-23 10-15 23-16 15-19{diagram} draw(B)

A – Loses a piece. 8-11 draw Published Play.

B – See the diagram. WW.



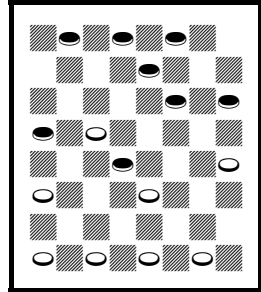
18. White wins

Unknown Round

Several scoresheets either didn't mention a round number or mentioned the wrong round number.

14. Sean McElkenny – Francis McNally, 2013 English Open, round ?

11-15 24-19 15-24 28-19 8-11 22-18 9-14(A)
 18-9 5-14 26-22(B) 11-15 22-18 15-24 18-9
 6-13 27-20 4-8 25-22(C) 8-11 22-18 10-15
 18-14(D) 15-18 {diagram} WW(E)



19. White draws

A – 11-16 draw Published Play.

B – 25-22 draw Published Play.

C – 23-18 draw Published Play.

D – 30-25 draw Published Play.

E – See the diagram. Continue 32-27 1-5
 29-25* (30-26? 18-22 BW) 11-15 30-26* 3-8
 20-16 (or 26-22 draw) 12-19 23-16 8-12 14-10
 draw.

15. Francis McNally – Sean McElkenny, 2013 English Open, round ?

11-15 24-19 15-24 28-19 8-11 22-18 4-8 (11-16 draw Published Play)
 25-22 10-14 (11-16 draw Published Play) 29-25 11-16 BW (draw Published
 Play; perhaps the game continued)

16. Francis McNally – Jim O'Brien, 2013 English Open, round ?

11-16 23-18 16-20 24-19 10-14 18-15(A) 14-18?(B) 21-17 7-11 17-14!(C)
 2-7(D) {diagram} 26-23?(E) 20-24! 27-20 18-27 31-24 9-18 32-27 5-9(F)
 30-26(G) 7-10 26-23 10-14(H) 15-10 6-15 19-10 BW

A – 26-23 draw as in *Lees' Guide* p.25.

B – 7-10 draw Published Play.

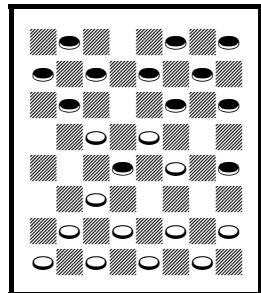
C – 28-24? should draw, R. Ward – S. Gonotsky, 1927 UK v. US.

D – Falls into a pretty trap. 11-16 WW, W. Wilkie – T. Home, 1907 *Shearer Mail Ty.* in *Shearer's Handbook* p.60 v.10.

E – See the diagram. 22-17! 9-13 (11-16 26-22
 16-23 15-10 WW) 26-23 13-22 27-24 WW.

F – 6-9 BW.

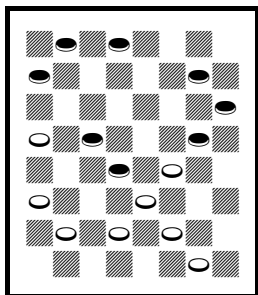
G – 22-17 BW?



20. White wins

17. Tony Boyle – Colin Young, 2013 English Open, round ?

11-15 21-17 8-11 17-13 9-14 23-19(A) 4-8 25-21(B) 15-18 22-15 11-18
 29-25 10-15 19-10 6-15 26-23 8-11 24-19 15-24 28-19 11-16 31-26 3-8
 26-22 7-11 22-15 11-18 30-26 {diagram} 5-9??(C) 13-6 2-9 26-22 1-5
 22-15 14-18 23-14 {diagram} draw(D)



21. Black draws

A – 25-21 draw
 Published Play.

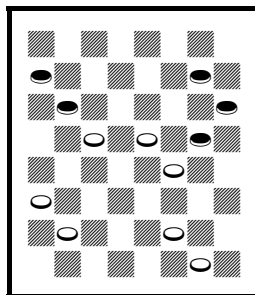
B – Old 14th.

C – See the first
 diagram. This move
 may not have been
 played here. 14-17*

21-14 5-9 14-5 8-11
 draw, S. Cousin's
1000 Best Games,
 p.113 v.8.

D – See the second

diagram. This position is a WW, and was probably never seen in the game, which ended in a draw. The names were switched on one of the scoresheets.



22. White wins

18. Sean McElkenny – Lindus Edwards, 2013 English Open, round ?

11-15 23-18 15-19 24-15 10-19 22-17(A) 12-16(B) 17-14 8-12(C) 27-24
 4-8 24-15 7-10 14-7 3-19 18-15!(D) {diagram} 6-10?(E) 15-6 1-10 25-22
 8-11 22-17 11-15 29-25 9-14 17-13 2-6(F) 25-22 16-20 22-17 19-24(G)
 28-19 15-24 26-23 24-28(H) 23-19 14-18 17-14 WW

A – 27-24 draw Published Play.

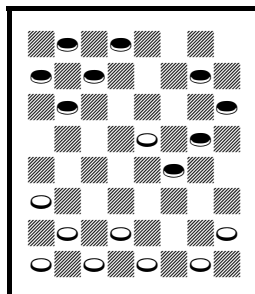
B – In the other game, White lost in some
 unknown way after Black moved 8-11.

C – 7-11 draw Published Play.

D – May improve published play. 25-22 should
 draw, W. Ryan – B. Case, 1938 *Wood's Checker
 Player* g.259 v.5B.

E – See the diagram. 2-7 21-17 19-23 26-19
 16-23 31-26 7-11 draw.

F – 16-20 25-22 14-18 21-17! 18-25 30-21 5-9



23. White wins

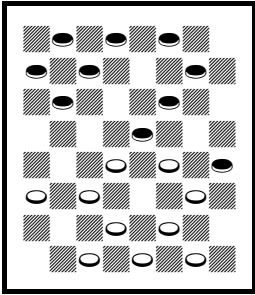
WW.

G – 5-9 26-23 WW.

H – 12-16 31-26 WW.

19. Tony Boyle – Sean McElkenny, 2013 English Open, round ?

11-15 24-20 12-16 20-11 7-16 22-18 15-22 25-18 8-11 28-24 16-20
29-25(A) 10-15(B) 25-22(C) 4-8(D) 23-19(E) {diagram} 6-10?(F) 19-16
2-7(G) 16-12 9-14(H) 18-9 5-14 22-17 11-16 26-23 15-18 17-13 1-6 30-25
{diagram} 16-19(I) 23-16 8-11 24-19 11-15 32-28 15-24 28-19 14-17
21-14 10-17 25-21 6-10 21-14 10-17 19-15 17-22 15-11 7-10 11-7 10-15
7-2 15-19 2-6 19-23 27-24 20-27 31-24 22-25 16-11 18-22 11-7 3-10 6-15
WW



24. Black draws

A – 24-19 draw
Published Play.

B – 4-8 25-22 8-12
draw Published
Play.

C – Stronger than
18-14 draw.

D – 6-10? may lose,
Published Play.

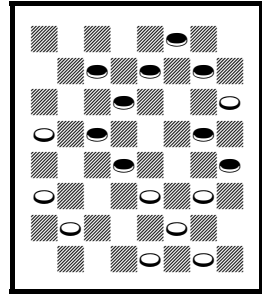
E – 21-17 WW
Published Play, but
it actually draws.

F – See the first diagram. 2-7 draw, KingsRow.

G – 8-12 WW Published Play.

H – 9-13 WW?

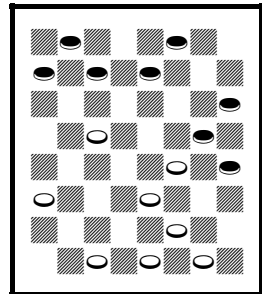
I – See the second diagram. 8-11 23-19 WW.



25. White wins

20. Sean McElkenny – Tony Boyle, 2013 English Open, round ?

11-15 24-20 12-16 20-11 7-16 22-18 15-22 25-18 8-12(A) 29-25 4-8 18-14(B) 10-17 21-14
9-18 23-14 8-11 28-24 16-20 24-19 2-7 25-21
11-16 26-23(C) {diagram} 6-9?(D) 19-15 9-18
23-14 16-19 21-17 19-24 32-28 1-6 28-19 6-9
15-10 9-18 10-6 7-11 19-15 11-16 15-11 5-9
6-1 18-22 17-13 9-14 1-6 14-17 WW(E)

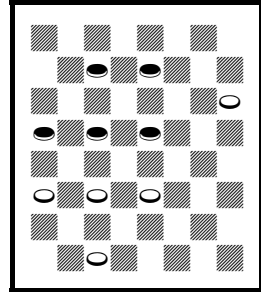


26. Black draws

- A – 8-11 draw Published Play.
- B – 28-24 should draw, W. Nesbitt – A. White, 1960 Lakeside.
- C – 27-23 may be stronger, L. Hall – E. Lowder, 1966 US National.
- D – See the diagram. 7-11* 30-26 6-9 14-10 9-14 26-22 draw.
- E – Good game.

21. Sean McElkenny – John Morgan, 2013 English Open, round ?

9-13 23-19 10-14 22-17(A) 13-22 25-9 5-14
 29-25 7-10 25-22 11-15 27-23 8-11(B) 24-20
 15-24 28-19 11-15 32-28 15-24 28-19 4-8
 22-18 8-11(C) 18-9 6-13 19-16 12-19 23-7 2-11
 26-23 11-15 30-26 10-14 26-22* 1-6 20-16*
 3-7 16-12* {diagram} 7-10?(D) 31-26 15-19
 23-16 10-15 WW



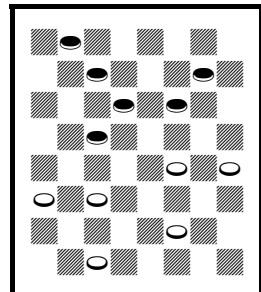
27. Black draws

- A – 19-15 draw Published Play.
- B – = Defiance.
- C – 6-9 draw Published Play.
- D – See the diagram. 6-10 or 7-11 draw, with a variety of continuations.

22. John Morgan – Sean McElkenny, 2013 English Open, round ?

9-13 23-19 10-14 22-17 13-22 25-9 5-14 29-25 7-10 25-22 11-15 8-11
 24-20(B) 15-24 28-19 11-15 32-28 15-24 28-19 3-7(C) 31-26 7-11
 26-23(A) 19-16 12-19 23-7 2-11 26-23(D) 4-8(E) 23-19?(F) {diagram}
 8-12?(G) 22-17* BW(H)

- A – = 11-15 23-19 7-11 26-23 9-14 22-18 15-22 25-9 5-14 29-25 11-15 25-22 as in *Robertson's Guide*.
- B – 22-17 4-8 30-26 2-7 24-20 15-24 28-19 11-15 draw, KingsRow, then maybe 26-22 15-24 22-18 6-9 17-13 1-6 32-28 draw.
- C – 4-8 draw, B. Woolhouse – W. Beattie, *Leeds Weekly Draughts Player* vol. 2 p.97.
- D – 22-17 draw, may be easier.
- E – 10-15 22-17 or others draw.
- F – 22-17 or others draw.
- G – See the diagram. 10-15 19-10 6-15 22-17 14-18 17-14 (17-13 15-19 30-26 1-5 BW) 15-19 BW.



28. Black wins

H – Continue 6-9 (14-18 17-14* draw) 20-16* 11-20 17-13 1-6 30-25
14-18 21-17 9-14 25-21 draw.

23. John Morgan – Billy Kelly, 2013 English Open, round ?

12-16 24-20 8-12 22-18(A) 9-14(B) 18-9 5-14 25-22 16-19(C) 23-16
12-19 27-23(D) 4-8 23-16 8-12 32-27 12-19 27-23 19-24(E) 28-19 11-15
19-16 15-19(F) {diagram} WW

A – 28-24 draw Published Play.

B – 16-19 into the Bristol.

C – A draw in *Robertson's Guide*.

D – 22-17 draw, Published Play.

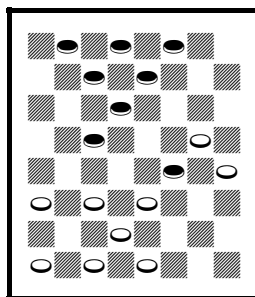
E – 3-8 draw Published Play.

F – See the diagram. No result is mentioned on the scoresheet. The game below continued from here:

11-16 24-20 16-19 23x16 12x19 22-18 9-14
18x9 5x14 25-22 8-11 (into the above
game) 27-23 4-8 23x16 8-12 32-27 12x19
27-23 19-24 28x19 11-15 19-16 15-19 (and

we continue from the diagram) 22-18! (aiming for a database win)
19-24 18x9 6x13 16-11! 7x16 20x11 24-28 23-18?(F1) 10-15* 18-14
(30-25 draw) 15-19* 14-10 28-32 10-7 3x10 11-8 32-28 8-4 28-24
26-23 19x26 30x23* 24-20 23-19 20-24 19-16 draw (continue 13-17
draw), J. Morrison – J. Ingram, 1976 US National

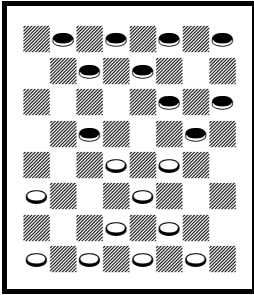
F1 – 30-25! 28-32 21-17 13-22 25-18 32-28 (10-15 26-22 32-28 11-8 WW
in the ten-piece databases) 18-15 WW in the ten-piece databases.



29. White wins?

24. Leo Springer – Graham Young, 2013 English Open, round ?

10-15 24-19 15-24 28-19 11-16(A) 22-18 9-14(B) 18-9 5-14 25-22 8-11
22-18 {diagram} 7-10?(C) 18-9 6-13 29-25 2-6 25-22 4-8 21-17 6-9 22-18!
13-22 26-17 1-5 {diagram} WW(D)



30. Black draws

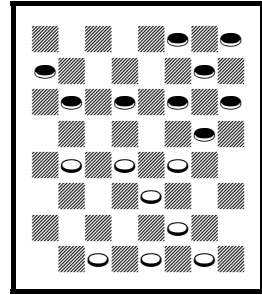
A – 6-10 draw
Published Play.

B – 8-11 draw
Published Play.

C – See the diagram. 6-9 was called a WW in *Wood's Checker Studies*, from 9-14 22-18 10-15, but it is a solid draw.

D – See the second

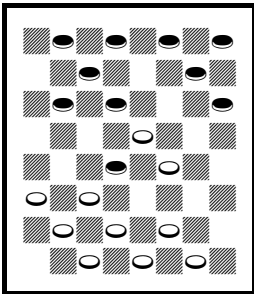
diagram. This position apparently never occurred in this game, as there are missing moves. Incidentally 18-15 now wins easily, and may be somewhat similar to the actual game. These two scoresheets said round 2, but both of these players played other games in round 2.



31. White wins

25. Graham Young – Leo Springer, 2013 English Open, round ?

10-15 24-19 15-24 28-19 9-14(A) 19-15(B) 11-18 22-15 5-9(C) 25-22 7-10(D) 23-19 14-18 29-25 {diagram} 9-14?(E) 26-23 2-7 31-26 7-11 22-17(F) 11-16 17-13 16-20 {diagram} 32-28?(G) 20-24 BW



32. Black draws

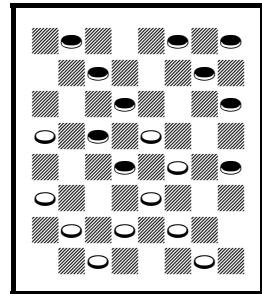
A – 6-10 draw
Published Play.

B – 22-18 draw
Published Play.

C – 12-16 draw
Published Play.

D – 12-16 23-18 14-23 26-12 7-10 draw.

E – See the first diagram. 3-7 or others draw.



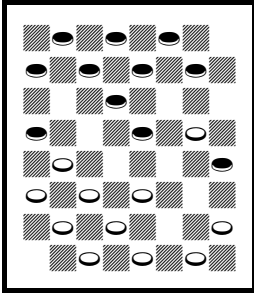
33. White wins

F – 21-17 is probably an easier WW.

G – See the second diagram. 26-22! 12-16 19-12 10-26 30-23 3-7 12-3 7-10 22-15 10-26 3-7 4-8 27-23 26-30 25-22 6-10 22-17 30-25 7-2 WW.

26. Brian Poole – John Jolliff, 2013 English Open, round ?

12-16 21-17 16-19 23-16(A) 11-20 25-21(B) 8-11 24-19 4-8(C) 29-25
 11-15 19-16?(D) 9-13 27-23 {diagram} 8-11?(E) 17-14 10-17 21-14 13-17
 22-13 6-9 13-6 2-27 32-23 1-6 25-22 6-10 31-27?(F) {diagram} 5-9?(G)
 27-24 20-27 23-18 11-20 18-2 10-14 30-25 27-31 25-21 14-18 22-15 31-22
 15-10 9-14 2-6 3-8 10-7 draw



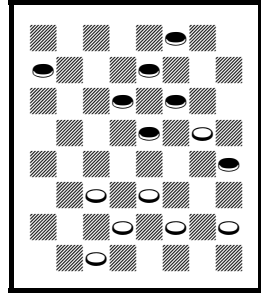
34. Black wins

A – 24-15 draw
 Published Play.

B – 17-13 draw
 Published Play.

C – 9-14 should
 draw, T. Watson –
 C. Walker, 1987
 English Open.

D – 17-13! (17-14
 should draw, W. K.
 Campbell – W.
 Holmes, 1908



35. Black wins

English Ty.) 15-24 28-19 8-11 19-16 should draw, J. Guthrie – R. Harley,
 1970 US National.

E – See the first diagram. 15-18 (6-9 or others win) 23-14 6-9 BW.

F – 22-18* draw.

G – See the second diagram. 10-14 16-12 7-10 28-24 5-9 23-19 11-16
 26-23 14-18 BW.

27. John Jolliff – Brian Poole, 2013 English Open, round ?

12-16 21-17 16-19 23-16(A) 11-20 17-13 9-14 24-19(B) 8-11 27-23 4-8(C)
 22-18 8-12 18-9 5-14 25-22 11-16(D) 29-25(E) 7-11 22-18 1-5 18-9 5-14
 25-22(F) 11-15* 32-27 15-24 28-19 14-17(G) 22-18* {diagram} 2-7?(H)
 26-22 17-26 31-22 7-11 30-25 11-15 18-11 10-14 25-21 6-10 22-18 10-15
 19-10 16-19 WW

A – 24-15 draw Published Play, as mentioned above.

B – 25-21 may be more popular.

C – 11-15 draw Published Play.

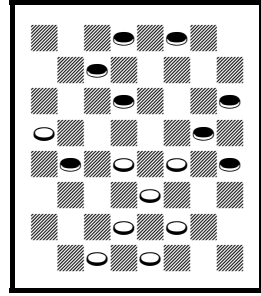
D – 11-15 draw, R. Frye – V. Adams, 1968 US National.

E – 22-18 14-17* 32-27 White better.

F – 26-22 draw, KingsRow.

G – 14-18 22-15 10-14 draw.

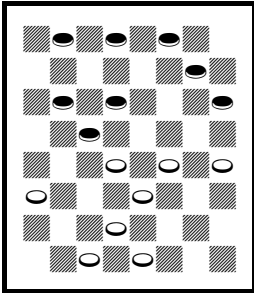
H – See the diagram. 17-21* 26-22* 3-8 22-17
8-11* 18-14 11-15 14-7 15-24 7-3 6-9* draw.



36. Black draws

L28. Joan Caws – Brian Poole, 2013 English Open, round ?

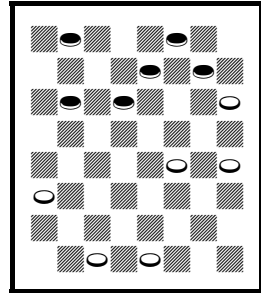
9-13 23-19 10-14 22-17 13-22 25-9 5-14 29-25 7-10 27-23 11-15 25-22
8-11(A) 24-20 15-24 28-19 11-15 32-28 15-24 28-19 4-8 22-18 6-9
{diagram} 19-16?(B) 12-19 23-16 14-23 26-19 2-7 16-12 {diagram}
10-15?(C) 19-10 7-14 20-16* 9-13 30-26 14-18 draw



37. White draws

A – = 11-15 23-19
9-14 27-23 8-11
22-18 15-22 25-9
51-4 29-25 11-15
2 5 - 2 2 7 - 1 1
Defiance.

B – See the first
diagram. 31-27
draw Published
Play, as in *Basic
Checkers*. 20-16 is
also popular.



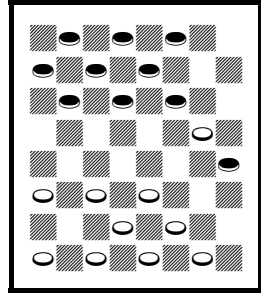
38. Black wins

C – See the second diagram. 8-11 (or 9-13 or 9-14 BW) 31-27 9-13 30-25
13-17 BW, as White can't king.

29. Terry Bedlow – John Jolliff, 2013 English Open, round ?

12-16 24-19 16-20 22-18 11-15 18-11 8-24 28-19 4-8 25-22 8-11 19-16(A)
{diagram} 11-15?(B) 23-18(C) 7-11(D) 16-7 2-11 27-23 20-24(E) 23-19
24-28 19-16 11-20 18-11 10-15 31-27(F) 9-14(G) 26-23 6-10 30-25 5-9
11-7 1-6 23-18 14-23 27-11 10-15 7-2 15-19 21-17 19-23 17-14 9-18 2-9
20-24 22-15 24-27 15-10 27-31 25-21 WW(H)

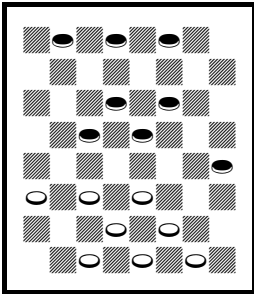
- A – 22-18 or 23-18 draw Published Play.
- B – See the diagram. 9-13 draw Published Play.
- C – 29-25 9-13 23-18 15-19 WW.
- D – 15-19 WW?, A. Holmes – A. Millhone, 2012 US National from 12-16 22-18 16-20.
- E – 10-14 also loses.
- F – Others win.
- G – 15-19 may offer a small hope.
- H – The scoresheets said round 2, but both of these two players played other games in round 2.



39. Black draws

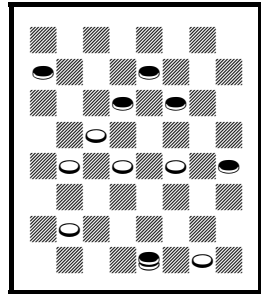
30. John Jolliff – Terry Bedlow, 2013 English Open, round ?

12-16 24-19 16-20 22-18 11-15 18-11 8-24 28-19 4-8 25-22 9-14(A) 22-18 8-11 18-9 5-14 29-25 10-15?(B) 19-10 6-15 25-22 7-10 {diagram} 23-18?(C) 14-23 27-18 15-19 18-14(D) 10-17 21-14 19-24 22-18 3-7 26-22(E) 2-6* 31-26 1-5 26-23 24-27* 22-17(F) 6-10 23-19 27-31 30-25?(G) {diagram} 20-24?(H) 32-27?(I) 31-26 27-20 26-22 19-16 22-13 25-21 10-17 21-14 13-17 16-12 17-10 12-8 10-14 18-9 5-14 8-3 7-10 BW



40. White wins

- A – 8-11 draw Published Play.
- B – 6-9 draw Published Play.
- C – See the first diagram. 22-17! 3-8 26-22 8-12 17-13 2-7 31-26 WW.
- D – 21-17 19-24 draw.
- E – 30-25 draws.
- F – Or 14-9 6-13



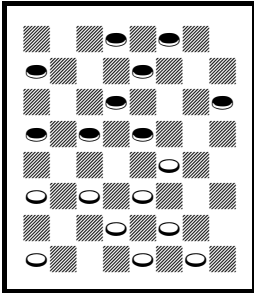
41. Black wins

- 23-19 27-31 18-14 20-24 22-18 draw.
- G – 17-13 10-17 19-15 11-16 18-14 16-19* 13-9 draw.
- H – See the second diagram. 31-26 BW.
- I – 25-21 31-26 17-13 10-17 21-14 draw.

Round 2

31. Shane McCosker – Jim O’Brien, 2013 English Open, round 2

10-14 23-19 11-16 26-23 9-13(A) 22-18 6-10 18-9 5-14 24-20 1-5 20-11
 8-24 28-19 4-8 30-26(B) 8-11 25-22 11-15 {diagram} 27-24?(C) 7-11
 32-28 5-9 29-25 2-6 24-20 15-24 28-19 11-15 19-16 12-19 23-16 15-19
 16-11 10-15 20-16 19-24 16-12 15-19 11-8 24-28 8-4 28-32 4-8 {diagram}
 32-28?(D) 31-27?(E) 28-32 27-23 19-24 8-11 24-27 11-16 27-31 23-19
 14-18 22-15 31-29 16-11 29-25 19-16 32-28 15-10 6-15 11-18 28-24 16-11
 24-19 BW



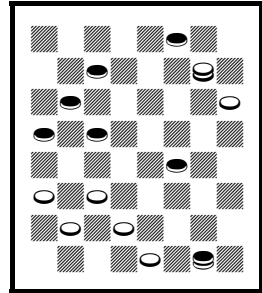
42. White draws

A – = 9-13 23-19
 11-16 26-23 10-14.
 6-10 draw Published
 Play.

B – 25-22 draw
 Published Play.

C – See the first
 diagram. 32-28 or
 21-17 draw.

D – See the second
 diagram. 6-10* 8-4
 10-15 4-8 14-18



43. Black wins

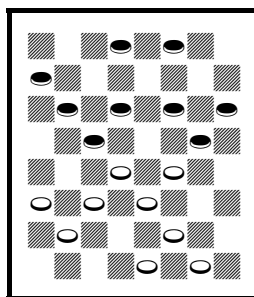
BW Colors Reversed, P. Fondren – J. Caldwell, 1974 US National from
 9-13 22-18 11-15 Colors Reversed.

E – 8-11* 19-24 11-16* 14-18* 22-15 24-27 draw.

32. Jim O’Brien – Shane McCosker, 2013 English Open, round 2

10-14 23-19 11-16 26-23 6-10 30-26 8-11(A) 19-15! 11x18(B) 22x6 1x10
 26-22(C) 4-8 22-18(D) 8-11 25-22 10-15 24-19* 15x24 28x19 7-10* 29-25
 {diagram} 2-6?(E) 22-17 9-13 18x2 13x29 2-7 WW

A – This draws. 1-6 draw Published Play.
 B – Or 10-19 draw, KingsRow.
 C – 25-22 4-8 22-17 draw, KingsRow, then 8-11* draw.
 D – Or 22-17 draw.
 E – See the diagram. 3-7* (9-13? WW Colors Reversed, D. Pawlek – M. Vondra, 2005 Czech Open from 11-15 23-18 8-11 Colors Reversed) 32-28 9-13* 18-9 5-14 22-18* 14-17 21-14 10-17 25-21 17-22 19-15 16-19 draw.

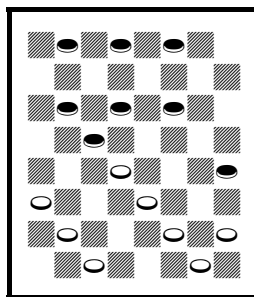


44. Black draws

33. Colin Young – Billy Kelly, 2013 English Open, round 2

11-16 22-18 16-19 23-16 12-19 24-15 10-19 25-22 9-14 18-9 5-14(A) 29-25(B) 8-11 27-23(C) 4-8 23-16 11-20 26-23 8-11 22-18(D) 6-9 31-27 7-10 {diagram} 25-22?(E) 1-5 28-24 10-15 22-17 15-22 17-10 9-14 23-19 22-25 19-16 11-15 16-11 25-29 11-7 2-11 10-6 14-18 6-2 18-23 27-18 20-27 32-23 15-22 21-17 BW

A – = 9-14 22-18 11-16 18-9 5-14 25-22 16-19 23-16 12-19 24-15 10-19.
 B – 22-17 draw Published Play.
 C – 22-17 draw Published Play.
 D – 22-17 draw, KingsRow.
 E – See the diagram. 23-19* (28-24? BW, L. Balderson – J. Ingram, 1976 US National) 14-23 27-18 10-14 (20-24 25-22 or 19-16 draw) 18-15 11-18 22-17 draw.



45. White draws

34. Billy Kelly – Colin Young, 2013 English Open, round 2

11-16 22-18 16-19 24-15 10-19 23-16 12-19 25-22 8-11 29-25 9-14 18-9 5-14 22-17 4-8(A) 17-10 7-14 25-22(B) 6-10(C) 27-23 {diagram} 2-7?(D) 23-16 11-20 22-17 8-11 17-13 10-15 13-9 3-8 26-23 11-16 31-26 8-12 9-5 7-10 23-19 16-23 26-19 15-24 28-19 14-18 32-27 20-24 27-20 18-23 20-16 23-27 WW

A – 6-10 draw Published Play.

B – B. Case claimed that 27-23 is a WW:

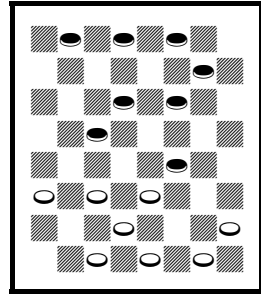
9-14 22-18 11-16 18x9 5x14 25-22 16-19
24x15 10x19 23x16 12x19 22-17 8-11
17x10 7x14 29-25 4-8 27-23 (varies from
the above game) 2-7 23x16 11x20 25-22
8-11 26-23 6-10!(B1) 31-27 10-15? (1-5 or
others draw, J. Loy) 28-24 7-10 22-17 3-8
(15-18 may lose, J. Loy) 30-26 1-6 26-22
6-9 23-18 14x23 27x18 20x27 32x23 WW,
B. Case, *Three Move Checkers*, p.33 v.3

B1 – 11-15? 31-27 7-11 22-17 6-10 28-24 3-8

(15-18 also loses, J. Loy) 30-26 1-6 26-22 6-9 23-18 WW, B. Case.

C – 11-15 draw, C. Adamson – R. Martins, 1884 match g.2, in *Robertson's Guide* p.104 v.121.

D – See the diagram. 3-7 draw, J. Denvir's *3-Move Guide* p.79 from 11-16 22-18 9-14.



46. Black draws

35. John Morgan – Tony Boyle, 2013 English Open, round 2

11-15 22-17 10-14(A) 17-10 7-14 26-22 8-11(B) 22-17(C) 6-10 17-13 1-6
25-22 3-7 22-17(D) 14-18 23-14 9-18 17-14 10-17 21-14 12-16 30-26(E)
4-8 24-20 8-12 {diagram} 26-23?(F) 16-19 23-16 12-19 27-24 BW

A – Tinsley's Denny, one of the difficult openings.

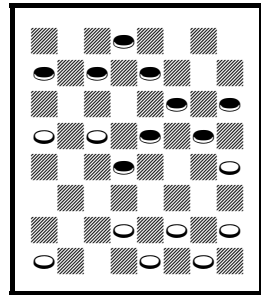
B – = 11-15 23-18 10-14 18-11 8-15 26-23 7-11 as in *Basic Checkers*.

C – 22-18 draw Published Play.

D – 23-19 draw, A. Skelding – F. Essick, *Badger Checker Player* g.867.

E – 31-26 may be easier?

F – See the diagram. 29-25* 16-19* (18-22? 26-17! 6-9 13-6 2-18 25-21 16-19 27-24! 18-22 17-14 22-25 31-26! WW, winning a piece) 14-10 7-14 27-23* draw.



47. White draws

36. Tony Boyle – John Morgan, 2013 English Open, round 2

11-15 22-17 10-14 17-10 7-14 24-19 15-24 28-19 8-11 25-22 11-16(A)
 22-18 4-8(B) 18-15 16-20(C) 29-25 2-7 {diagram} 26-22?(D) 7-10 31-26
 9-13* 22-18?(E) 5-9 25-22 3-7 32-28 1-5 28-24 7-11 30-25 12-16 19-3
 10-28 3-8(F) 11-16 18-15 28-32 8-11 16-19 23-16 32-30 16-12 14-18 BW

A – 6-10 draw Published Play.

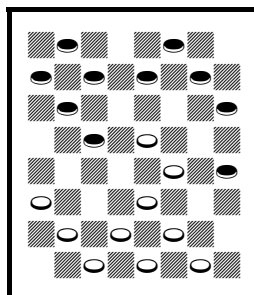
B – 6-10 into the same published play as in note A.

C – 14-18 23-14 9-18 15-11 8-24 27-11 6-10 draw, KingsRow.

D – See the diagram. 23-18! 14-23 27-18 9-13 25-22 7-10 18-14 10-17 21-14 3-7 30-25! 6-9 22-18 WW.

E – 23-18 14-23 27-18 12-16 draw, KingsRow.

F – 3-7 BW Colors Reversed, *Kear's Encyclopedia* 4th ed. p.324 v.31 from 10-14 24-20 6-10 Colors Reversed.



48. White wins

37. Graham Young – Brian Poole, 2013 English Open, round 2

10-15 22-17 7-10 17-14 10-17 21-14 9-18 23-14 15-18(A) 24-19(B) 11-16
 26-23(C) 16-20?(D) 25-21(E) 8-11(F) {diagram} 29-25?(G) 4-8?(H)
 28-24?(I) 2-7(J) 31-26(K) 11-16?(L) 26-22 7-11 22-15 11-18 14-10 6-15
 19-10 8-11 23-14 11-15 25-22 3-8 30-26 16-19 32-28 8-11 27-23 WW

A – 3-7 draw Published Play.

B – 26-23 White better, KingsRow, with no continuation.

C – 19-15 draw, KingsRow.

D – May or may not be a loser. 6-9 28-24 3-7 White better.

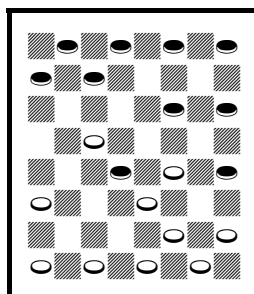
E – 19-15 or 28-24 may win. 30-26 draw, F. Hilliker – W. McIlurich, *Draughts World* g.2391.

F – Others may be no better.

G – See the diagram. 31-26! 4-8 (3-7 29-25 6-9 19-15 WW?) 29-25 3-7 14-9! 5-14 19-16 12-19 23-16 11-15 16-12 WW.

H – 6-9! draw, with a huge variety of continuations.

I – 31-26! 2-7 21-17! 11-16 26-22 7-11 22-15 11-18 19-15 16-19 23-16



49. White draws

12-19 17-13 WW.

J – 6-9 may be easier.

K – 19-15!? 6-9* 15-10 11-15* 30-26* 12-16* 26-22* 16-19* 23-16 8-12* and maybe 21-17 12-28 17-13 3-8, an easy piece-down draw for White.

L – 6-9* 26-22 draw, KingsRow, and continue 9-13 or 1-6 draw.

38. Brian Poole – Graham Young, 2013 English Open, round 2

10-15 22-17 7-10 17-14 10-17 21-14 9-18 23-14 3-7 25-21 6-10(A) 26-23

10-17 21-14 15-19 24-15 11-18 29-25 1-6 31-26 8-11 28-24(B) 6-10?(C)

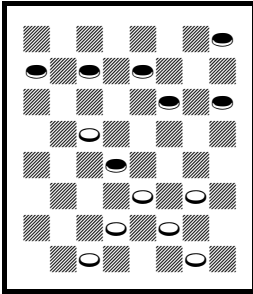
25-21(D) 10-17 21-14 2-6 {diagram} 30-25?(E) 6-9?(F) 24-19?(G)

9-13?(H) 26-22?(I) 4-8 22-15 11-18 19-15 13-17 25-21 18-22 15-10 7-11

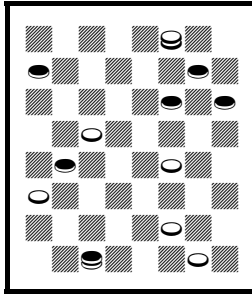
10-7 22-26 7-3 26-30 23-19?(J) {diagram} 17-22?(K) 3-7 11-16 19-15

30-26 7-11 16-19 11-4 26-31 27-24 19-28 21-17 12-16 17-13 16-19 14-10

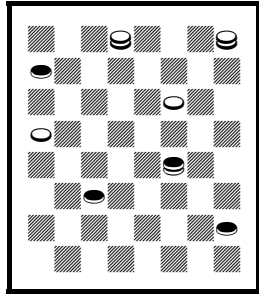
19-23 10-7 31-26 15-11 23-27 32-23 26-19 7-2 {diagram} WW(L)



50. White wins



51. Black wins



52. Draw

A – Slightly weak. 11-16 draw Published Play, as in *Basic Checkers*.

B – 23-19 draw, KingsRow.

C – 4-8 draw, KingsRow, and continue 23-19 with White better.

D – 24-20 or 24-19 also win.

E – See the first diagram. 24-20 11-15 20-16 WW.

F – 4-8* 23-19 11-16* 26-23 16-20* draw.

G – 23-19 11-16 19-15 16-20 15-10 WW.

H – 7-10 14-7 11-16 BW.

I – 27-24! 18-27 32-23 13-17 25-21 WW.

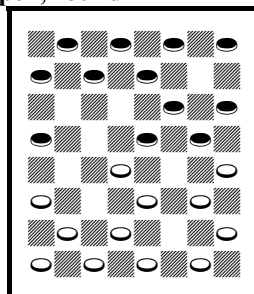
J – 32-28 draws.

K – See the second diagram. 30-26 27-23 26-31 23-18 31-26 19-15 17-22 15-10 22-25 BW.

L – See the third diagram. A fairly obvious draw.

39. A. C. Rose – Leo Springer, 2013 English Open, round 2

9-13 22-18 12-16 24-20 8-12 27-24 10-15?(A)
 {diagram} 25-22?(B) 7-10?(C) 23-19?(D)
 16-23 26-19 6-9 32-27?(E) 10-14 19-10 14-32
 24-19 11-15 28-24 32-28 30-25 3-8 22-17
 13-22 25-11 8-15 20-16 28-32 16-11 32-27
 10-7 27-20 19-10 2-6 21-17 6-15 17-13 9-14
 7-3 14-18 3-7 18-22 13-9 5-14 7-10 14-18
 10-19 20-16 11-7 16-23 7-2 23-19 2-7 22-26
 BW



53. White wins

A – 3-8* has an asterisk in *Basic Checkers*.

B – See the diagram. 24-19 WW, C. H.

Freeman – A. Heffner, 1885 match g.4, as in *Robertson's Guide* p.196 v.26 from 12-16 24-20 8-12.

C – draw in R. Bowen's *Bristol*, but it loses. 16-19 draw Published Play.

D – 24-19 15-24 28-19 6-9 32-27 WW, KingsRow.

E – Suicide. 31-27 may also lose, but it offers hope.

40. Leo Springer – A. C. Rose, 2013 English Open, round 2

9-13 22-18 12-16 25-22(A) 16-19 23-16(B) 11-20 29-25(C) 6-9(D) 18-14
 10-17 21-14 9-18 22-15 7-11?(E) {diagram} 26-22(F) 11-18 22-15
 13-17?(G) 24-19?(H) 3-7?(I) 31-26 17-21 {diagram} 26-22?(J) 8-12?(K)
 22-17 2-6 28-24 7-11 15-8 4-11 25-22?(L) {diagram} 11-16?(M) 17-14*
 16-23 27-18 20-27 32-23 12-16 14-10 6-15 18-11 16-20 23-19 20-24 19-16
 24-27 11-7 27-32 7-3 32-27 3-7 1-6 16-11 27-23 11-8 23-19 8-3 19-23 3-8
 23-19 8-11 6-9 7-10 19-23 11-16 23-27 16-19 27-32 19-23 32-28 10-6 9-13
 6-10 28-24 10-15 24-28 15-19 28-32 19-15 32-28 15-10 28-24 23-18 24-19
 18-14 19-24 10-15 24-27 15-19 27-32 19-23 32-28 23-26 28-32 14-18
 32-27 26-31 27-24 18-23 5-9(N) 23-18 24-19 31-26 19-24 26-23 24-28
 23-19 28-32 19-15 32-27 15-10 WW

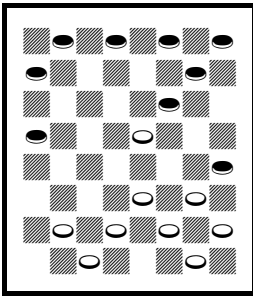
A – = 12-16 21-17 9-13 25-21.

B – 24-15 draw Published Play.

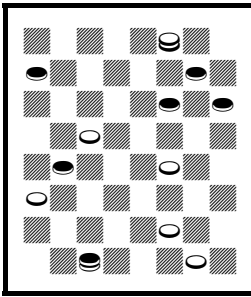
C – 18-14 = 12-16 21-17 9-13 25-21 16-19 23-16 11-20 17-14, as in R. Pask's 21CC.

D – 8-11 21-17 4-8 25-21 6-9 24-19 9-14 18-9 5-14 19-16 20-24 or 8-12 draw, KingsRow.

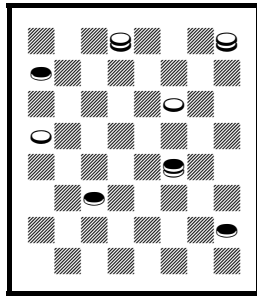
E – 5-9! draw, E. McConnell – G. Zuber, 1983 Lakeside.



54. White wins?



55. White wins



56. Black draws

F – See the first diagram. 26-23! 1-6 24-19! 3-7 27-23 WW?

G – 5-9 or 1-6 seem to draw, but it is hard to say how they might continue. 2-7 WW?, J. Crabtree – G. Dent, *Draughts World* g.2574 from 12-16 21-17 9-13.

H – 31-26 17-21 25-22 1-6 22-17 or 24-19 likely WW.

I – 5-9* 19-16 9-13 31-26 1-6 25-22 2-7 or 8-11 draw.

J – See the second diagram. 19-16! WW.

K – 1-6* draw, with a variety of continuations.

L – 17-14! 11-15 19-10 6-15 25-22 WW.

M – See the third diagram. 5-9 22-18 11-16* 19-15 9-13* 9-14 13-17* 15-11 17-22* 11-8 22-25* 8-3 25-29 draw.

N – 24-28 31-27 5-9 is much the same.

41. Terry Bedlow – Ian Caws, 2013 English Open, round 2

9-13 24-20 10-15 23-18(A) 12-16(B) 21-17 6-10?(C) {diagram} 25-21(D) 8-12(E) 27-23?(F) 16-19?(G) 23-16 12-19 17-14 10-17 21-14 2-6 20-16 11-20 18-2 6-9 29-25 9-18 22-15 4-8 15-10 8-11 10-7 3-10 2-7 11-15 7-14 1-6 25-22 6-9 14-18 9-14 18-11 WW

A – 28-24 draw Published Play.

B – 5-9 draw Published Play, as in *Basic Checkers*.

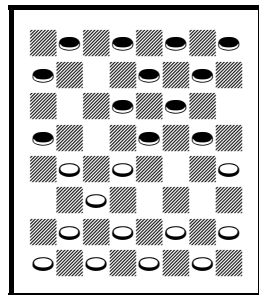
C – 16-19 draw Published Play. KingsRow

D – See the diagram. 17-14! 10-17 25-21 2-6 WW, KingsRow.

E – 16-19 may also lose?

F – 17-14! 10-17 21-14 16-19 WW, KingsRow.

G – 1-6 should draw, H. Schmid – I. Keder, 2003 Czech England Club.



57. White wins

42. Ian Caws – Terry Bedlow, 2013 English Open, round 2

9-13 24-20 10-15 27-24(A) 7-10 21-17?(B) 6-9 25-21 9-14 32-27 5-9 30-25
2-6?(C) 23-19* 15-18* 22-15 11-18 {diagram} 19-15?(D) 13-22 26-17
10-19 17-10 6-15 25-22 18-25 29-22 9-14 31-26 14-18 22-17 18-22 27-23
22-31 23-16 12-19 BW(E)

A – 28-24 draw Published Play, as mentioned above.

B – 32-27 draw, A. Moiseyev – R. King, 2005 WCM g.4.

C – 3-7 24-19 or others, BW.

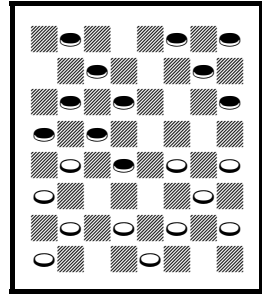
D – See the diagram. A miscalculation. 25-22!

(this should look like the best chance of a draw) 18-25 29-22 14-18 22-15 13-22 26-17 3-7

27-23 9-13 20-16 13-22 15-11 8-15 23-18 1-5 18-2 4-8 2-9 5-14 24-20 22-25 31-26

25-30 26-22 30-26 22-17 26-22 17-13 14-18 13-9 18-23 9-6 23-26 6-2 26-31 2-6 10-14 6-9 22-18 28-24

31-27 9-13 18-15 draw! It seems that White will lose a piece.
E – The game went on.



58. White draws

43. Keith Foubister – John Jolliff, 2013 English Open, round 2

10-15 21-17 15-18 23-14 9-18 22-15 11-18
26-23(A) 6-9 23-14 9-18 31-26 1-6 24-19(B)
8-11 26-23 6-9 23-14 9-18 {diagram}
30-26??(C) BW(D)

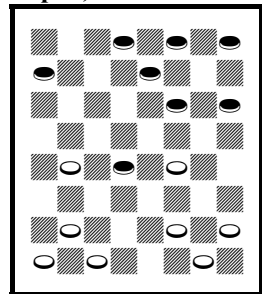
A – 25-21 or 17-13 in *Basic Checkers*.

B – Looks good. 26-23 draw, J. Bailey – D. McCaughie, mail, *International Draughts Magazine* vol. 2 g.45.

25-22 draw, E. Markusic – G. Moore, 1968 US National.

C – See the diagram. 17-14 2-6 28-24 draw, KingsRow.

D – Continue 11-15 BW.

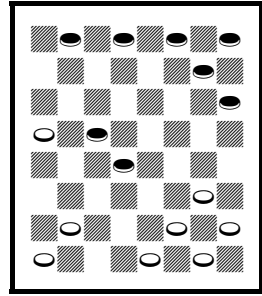


59. White draws

44. John Jolliff – Keith Foubister, 2013 English Open, round 2

10-15 21-17 15-18 22-15 11-18 23-14 9-18 26-23 6-9 23-14 9-18 30-26(A)
5-9 17-13(B) 9-14(C) 26-22 7-11 22-15 11-18 {diagram} 31-26?(D) 8-11
24-19 14-17 27-23 18-27 32-23 17-21 25-22 21-25 22-18 25-30 13-9 11-16
18-15 16-20 9-5 20-24 26-22 24-27 22-17 30-26 29-25 BW

- A – Varies from the preceding game. Round 3
- B – 17-14 draw Published Play, as in W. Ryan's *Modern Encyclopedia* p.58 v.1B.
- C – KingsRow moves 2-6 draw.
- D – See the diagram. This looks bad, because of 14-17 now or later. 24-19 or others draw.



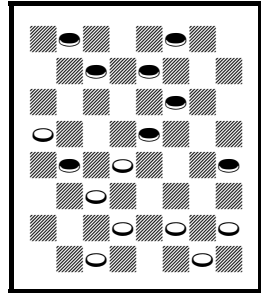
60. White draws

Round 3

45. Shane McCosker – Billy Kelly, 2013 English Open, round 3

10-15 21-17 11-16 17-13 16-20 23-19(A) 7-10 26-23(B) 9-14(C) 22-18(D)
 15-22 25-9 5-14 31-26(E) 2-7(F) 29-25 8-11 25-22 14-17 19-16 12-19 24-8
 4-11 23-18 10-15* {diagram} 27-23?(G) 6-9 13-6 1-10 22-13 15-31 23-18
 20-24 28-19 10-15 19-10 7-23 BW

- A – 22-18 draw Published Play.
- B – 22-18 draw Published Play.
- C – 8-11 draw, KingsRow.
- D – 30-26 draw, *British Draughts Player* p.137 v.1b.
- E – 29-25 BW?, D. Oliphant – K. Willis, 2008 Mind Sports Games.
- F – 3-7 draw, C. Hefter – J. Reed, 1889 match g.11 from 11-15 23-19 7-11.
- G – See the diagram. 18-14* 7-10* draw, R. Pask 21CC opening #127 v.4. That opening is 12-16 21-17 9-14.

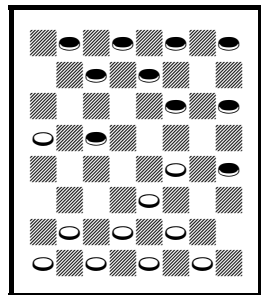


61. White draws

46. Billy Kelly – Shane McCosker, 2013 English Open, round 3

10-15 21-17 11-16 17-13 16-20 24-19(A) 15-24 28-19 8-11 22-18 9-14?(B)
 18-9 5-14 {diagram} 25-22(C) 14-17(D) 29-25 17-21 22-18 4-8(E) 25-22
 11-16 18-14 7-10 14-7 3-10 22-18 1-5 26-22 5-9 22-17 2-7 31-26 8-11
 18-15 11-18 23-5 16-23 27-18 WW

- A – 22-18 draw Published Play.
- B – = 10-15 21-17 11-16 17-13 9-14? 24-19 15-24 28-19 8-11 22-18 16-20, a draw in *Robertson's Guide* p.223, probably loses. See the diagram after the exchange. Instead, 11-16 draw Published Play.
- C – See the diagram.
- D – 4-8 probably loses in *Robertson's Guide*, Kelso trunk.
- E – 12-16 19-12 3-8 12-3 11-16 3-10 6-29 23-18 4-8 White strong, maybe a WW?



62. White wins

47. Lindus Edwards – Francis McNally, 2013 English Open, round 3

9-14 22-17 6-9 17-13 1-6 25-22 14-17 21-14 9-25 29-22 10-15 23-18(A)
25-22(B) 11-16 18-11 8-15(B) 24-19 15-24 27-11 7-16 22-18(C) 4-8 28-24
8-11 26-23 3-7 24-19 7-10 30-25(D) 16-20 31-26(E) 11-16 32-27 10-14
18-9 5-14 19-15* 16-19 23-16 12-19 27-23 19-24 23-19 24-27 19-16?(F)
27-31 26-23 {diagram} 14-17?(G) 23-18* 17-21 25-22 31-26 22-17 draw

A – Or 22-17 draw Published Play.

B – = 11-15 22-17 15-19 23-16 12-19 24-15
10-19 25-22 8-11 27-23 4-8 23-16 11-20 22-18
8-11 32-27 Colors Reversed.

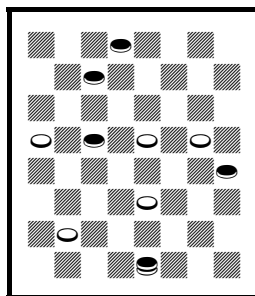
C – 28-24 draw Published Play.

D – 30-26 draw Published Play.

E – 31-27 draw Published Play. 25-22 draws,
but has lost a couple of times, so Black should
probably keep playing this ending.

F – 15-11 or 26-22 draw.

G – See the diagram. 31-27 23-19 14-17 25-21
(16-12 27-23 19-16 25-22 23-18 BW) 27-24
21-14 6-10 BW



63. Black wins

48. Francis McNally – Lindus Edwards, 2013 English Open, round 3

9-14 22-17 6-9 26-22 11-15 24-19 15-24 28-19 8-11(A) 22-18 11-15(B)
18-11 7-16 17-13 3-7?(C) 13-6 2-9 25-22 4-8 {diagram} 22-18?(D) 8-11
29-25 9-13 18-9 5-14 25-22 14-17 21-14 10-26 31-22 1-6 30-25 6-10 27-24
16-20 23-18 20-27 32-23 11-16 18-15(E) 10-14 22-18 14-17 25-21 17-22
15-11 7-10 11-7(F) draw(G)

A – 7-11 draw Published Play.

B – 9-13 draw Published Play.

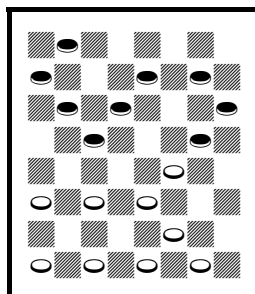
C – 4-8 draw, was played in the Fortman –
Tinsley game mentioned below. 2-6? WW, J.
Jolliff – I. Martynov, 2016 World Qualifier.

D – See the diagram. 27-24! 16-20 31-26 20-27
19-15 WW.

E – 25-21 draw.

F – 11-8 draw, R. Fortman – M. Tinsley, 1986,
R. Pask 21CC opening 27 v.7.

G – Continue 13-17 draw.

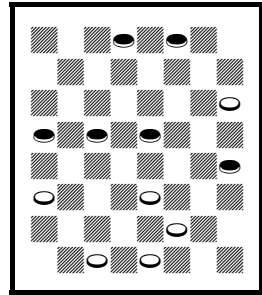


64. White wins

49. Colin Young – Sean McElkenny, 2013 English Open, round 3

9-14 24-20 5-9 22-18 11-16 20-11 8-22 25-18 4-8 29-25(A) 8-11 11-16(C)
 28-24 16-20(D) 24-19 1-5 19-16 12-19 23-16 14-23 26-19 9-13 27-23(E)
 6-9 22-18(F) 9-14 18-9 5-14 16-11 7-16 19-12 10-15 32-27?(G) {diagram}
 2-7?(H) 27-24 20-27 31-24 15-18 23-19 18-23 19-15 23-27 24-20 27-31
 draw(I)

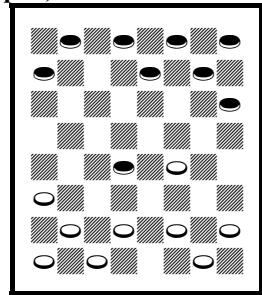
- A – 28-24 draw Published Play.
- B – 28-24 draw Published Play.
- C – 10-15 draw Published Play.
- D – 7-11 draw Published Play.
- E – 22-18 draw Published Play.
- F – 32-27 draw Published Play.
- G – 30-25 13-17 25-22 draw.
- H – See the diagram. 13-17 30-26 15-18 and 18-22 BW.
- I – Continue 20-16* draw.



65. White wins

50. Jim O'Brien – Tony Boyle, 2013 English Open, round 3

10-14 24-19 14-18 23-14 9-18 22-15 11-18
 26-23(A) 6-9 23-14 9-18 31-26(B) {diagram}
 5-9?(C) 19-16 12-19 26-23 19-26 30-5 8-11
 25-22 4-8 27-23 8-12 22-18 12-16 28-24 7-10
 18-14 10-17 21-14 11-15 14-10 2-6 29-25
 16-20(D) 24-19 15-24 32-28 6-15 28-10 20-24
 23-18 24-27 18-14 27-31 14-9* 31-26 9-6*
 26-30 25-21 30-26 6-2 26-22 2-7* 22-18 21-17
 18-22 17-13 22-18 13-9 WW



66. White wins

- A – 21-17 draw Published Play.
- B – 30-26 or 21-17 draw Published Play.
- C – See the diagram. This lines up a shot for the opponent. 2-6 or 1-6 draw, KingsRow.
- D – 6-9 loses more slowly.

51. Tony Boyle – Jim O'Brien, 2013 English Open, round 3

10-14 24-19 14-18 22-15 11-18 23-14 9-18 26-23(A) 6-9 23-14 9-18 21-17
8-11 25-21(B) 11-16(C) 19-15 16-19(D) 29-25(E) 2-6 31-26 4-8* 17-13
7-10?(F) 21-17?(G) {diagram} 19-23?(H) 26-19 10-14 17-10 8-11 15-8
6-31 25-21??(I) later draw

A – 21-17 draw Published Play.

B – 17-14 draw Published Play.

C – 4-8 draw in R. Pask's books.

D – 1-6 should draw, J. Bickerton – M. Banks,
1976 US National.

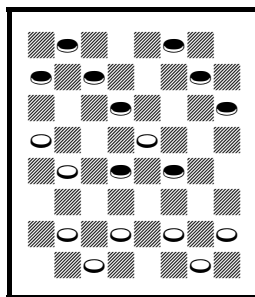
E – 27-24 is also good, A. Rupp – V. Ricciuti,
1952 US National.

F – 12-16 27-24 draw, KingsRow, then 16-20 or
8-11 draw.

G – 27-24 5-9 24-20 3-7 20-16 10-14 26-22
WW.

H – See the diagram. Black played the wrong
shot. 10-14 17-10 18-23 27-18 8-11 15-8 6-31 BW.

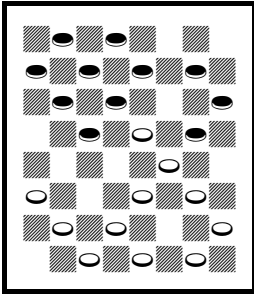
I – This is the move on the scoresheet. Presumably, 8-4 18-23 4-8 was
played here instead.



67. Black wins

52. John Jolliff – Graham Young, 2013 English Open, round 3

11-16 24-19 8-11 22-18 4-8 25-22 10-14 29-25(A) 7-10(B) 18-15?(C)
11-18 22-15 3-7?(D) 27-24?(E) {diagram} 14-17?(F) 21-14 9-27 32-23
16-20 31-27* 5-9 {diagram} 25-21?(G) 9-14 19-16 12-19 23-16 10-19
24-15 7-11 16-7 2-18 30-25 BW



68. Black wins

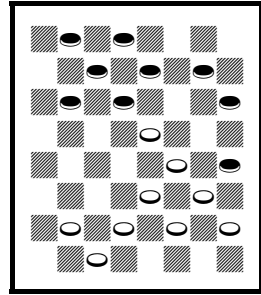
A – 22-17 draw
Published Play.

B – Or 16-20 draw
Published Play.

C – 27-24 draw,
Published Play.

D – 16-20 Black
strong, Bernstein –
Fox, 1909 London
Ty.

E – 28-24 14-18
23-14 9-18 or 16-23



69. White draws

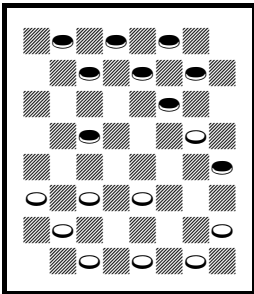
draw, KingsRow.

F – See the first diagram. 14-18 23-14 16-23 26-19 9-18 BW.

G – See the second diagram. 19-16 draw.

53. Graham Young – John Jolliff, 2013 English Open, round 3

11-16 24-19 8-11 22-18 4-8 25-22 16-20 19-16(A) 12-19 23-16 10-14
29-25 14-23 27-18 9-14 18-9 5-14 26-23?(B) {diagram} 8-12?(C) 30-26
12-19 23-16 11-15 31-27 6-10(D) 16-12?(E) {diagram} 2-6?(F) 21-17
14-30 28-24 30-23 27-2 20-27 32-23 1-5 2-9 5-14 draw



70. Black wins

A – 22-17 draw
Published Play.

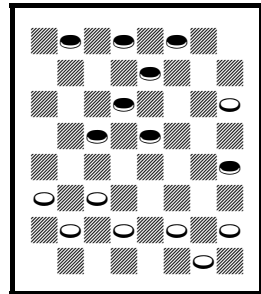
B – 16-12 draw,
Swan and Adamson,
Robertson's Guide
p.105 v.125.

C – See the first
diagram. 11-15

32-27 6-9 30-26
7-11 16-7 3-10 BW.

D – 6-9 draws.

E – 28-24 2-6 and



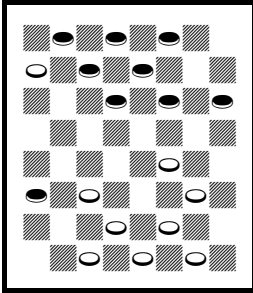
71. Black wins

the shot draws.

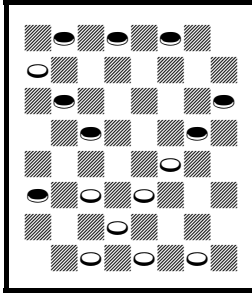
F – See the second diagram. Again, the shot draws. 1-5 BW.

54. A. C. Rose – Joan Caws, 2013 English Open, round 3

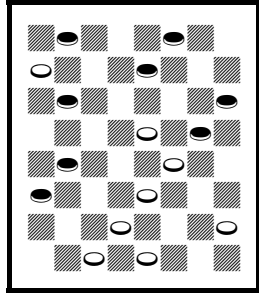
9-14 24-19 11-15 28-24(A) 5-9(B) 22-18 15-22 25-18 8-11(C) 21-17(D)
 14-21 18-15 11-18 23-5 4-8 29-25 8-11 25-22?(E) {diagram} 6-9?(F)
 27-23 10-14(G) 24-20 11-16?(H) 20-11 7-16 {diagram} 32-28?(I) 2-7(J)
 22-18 14-17* 18-15?(K) {diagram} 21-25! 30-14 9-27 31-24 16-30 24-20
 3-8 28-24 30-26 24-19 26-22 20-16 22-17 BW



72. Black wins?



73. White wins?



74. Black wins

A – 22-18 draw Published Play.

B – 8-11 draw Published Play.

C – 7-11 draw Published Play.

D – 24-20 or 26-22 draw Published Play.

E – 27-23 11-15 25-22 draw.

F – See the first diagram. 11-16! 27-23 16-20 BW?

G – Maybe 11-15 or 9-13 draw.

H – 9-13 draw.

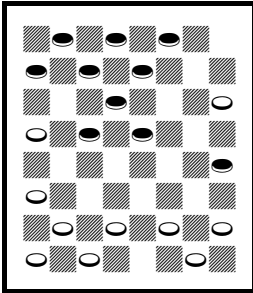
I – See the second diagram. 22-18! 2-6 26-22 3-7 31-27 6-10 18-15 14-18 15-6* 18-25 6-2 WW?

J – Or others.

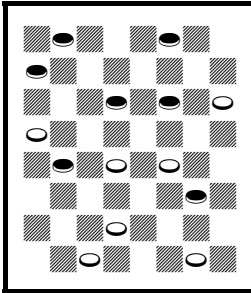
K – Into a pretty shot. 19-15 3-8 or 16-20 draw. See the third diagram (which is also on the cover of this book) after 18-15? See the above game for the solution.

55. Joan Caws – A. C. Rose, 2013 English Open, round 3

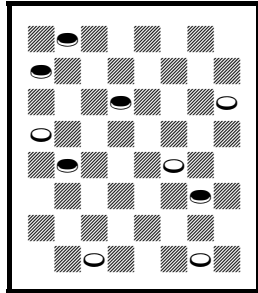
9-14 24-19 11-15 19-16?(A) 12-19 23-16 8-12 27-23 12-19 23-16 4-8
 31-27 8-11 16-12 11-16 22-17 16-20(B) 17-13 {diagram} 14-17?(C) 21-14
 10-17 25-21* 6-10 21-14 10-17 29-25 2-6 27-23 6-10 25-22 20-24 28-19
 15-24 23-19(D) 7-11! 22-18* {diagram} 11-16?(E) 18-14 16-23 14-7?(F)
 3-10 26-19 {diagram} 17-22?(G) 12-8 10-14 8-3 14-18 3-7 18-23 7-10
 22-26 19-16 24-27 16-12 27-31 12-8 31-27 8-3 26-31 3-7 27-24 7-11 31-26
 11-16 24-27 16-20 26-31 10-14 31-26 {diagram} 14-17?(H) 27-31?(I)
 20-24 5-9 13-6 1-10 32-28 10-15 17-14* 26-22 14-18 22-17 18-27 15-18
 24-20 31-24 20-27 WW



75. Black wins?



76. White wins?



77. Black wins

A – Probably loses.

B – Others may be stronger.

C – See the first diagram. 5-9 or 7-11 BW.

D – 22-18 draw.

E – See the second diagram. 17-21! 26-22* 1-6

22-17* 5-9 19-15* 10-19 17-14 draw.

F – 26-19 WW.

G – See the third diagram. 10-14* 12-8 14-18

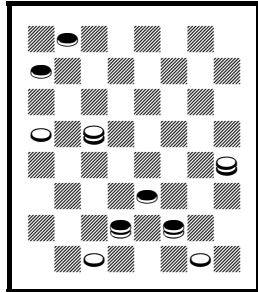
8-3 5-9* draw.

H – See the fourth diagram. 13-9! 26-31!

20-16* 31-26 (27-24 14-18 WW) 16-19 27-31

19-24 26-22 WW, into the shot.

I – 5-9* 13-6 1-10 17-13 26-22 or 27-31 draw.



78. White wins

56. Leo Springer – Brian Poole, 2013 English Open, round 3

9-14 22-17 6-9 17-13 11-15?(A) 13-6 2-9 25-22 14-18(B) 23-14 9-25 29-22
5-9 22-17(C) 10-14(D) 17-10 7-14 24-19 15-24 28-19 1-5 26-22 3-7 22-17
14-18 17-13 9-14 31-26 8-11 19-15 12-16 15-8 4-11 13-9 16-19 9-6 19-23
26-19 18-22 6-2 22-25 19-16 11-20 2-11 25-29 11-15 5-9 30-26 29-25
26-23 25-22 23-18 14-23 27-18 9-13 32-28 22-26 15-10 26-23 10-14 23-19
14-9 19-23 {diagram} draw(E)

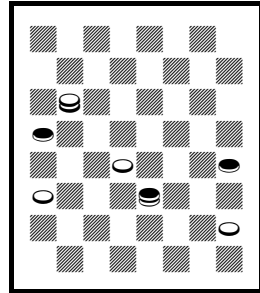
A – A loser, but apparently not published in the opening books. 1-6 draw Published Play. 2-6? has been played, but may also lose.

B – Best, as others lose more quickly. 8-11 WW, S. Thrane – J. Jolliff, 2012 World Mind Sports Games.

C – 27-23 WW.

D – 1-6 or 9-13 also lose.

E – See the diagram. WW.



79. White wins

57. Brian Poole – Leo Springer, 2013 English Open, round 3

9-14 22-17 6-9 25-22 1-6(A) 23-18(B) 14-23 27-18 11-15 18-11 8-15 17-13
4-8 30-25?(C) 8-11(D) 26-23 9-14(E) 23-19(F) 11-16(G) 31-27 16-23 27-9
5-14 22-17?(H) {diagram} 12-16?(I) 32-27?(J) 14-18(K) 17-14(L) 10-17
21-14 16-20 14-9 7-11 25-22 18-25 29-22 3-8?(M) 22-17 15-19 24-15
11-18 9-5 {diagram} 6-9(N) 13-6 2-9 17-13 9-14 5-1 14-17 1-6 18-22 6-10
17-21 10-14 21-25 13-9 25-30 9-6 30-26 6-2 22-25 draw

A – Somewhat risky. 9-13 draw Published Play, as in *Basic Checkers*.

B – 24-19 9-13 28-24 WW in the 1981, 1982, and 1983 I-D tournaments, but that probably draws.

C – Not the best. 24-19 (others draw) 15-24 28-19 8-11 draw, KingsRow, and maybe continue 22-18 9-14 18-9 5-14 then 26-23 or 26-22 or 32-28 draw.

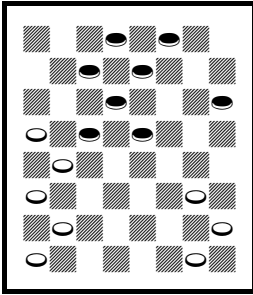
D – 12-16 is also strong.

E – 11-16! 24-19 15-24 28-19 7-11! Black strong, maybe a BW.

F – 22-18 makes sense, too.

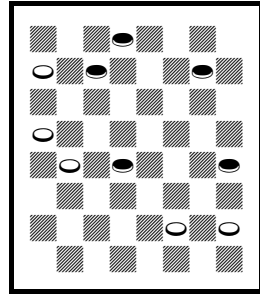
G – May be best.

H – 13-9* 6-13 22-17 draw.



80. Black draws

I – See the first diagram. 14-18
 32-27 12-16 = same
 (draw).
 J – 13-9* draw.
 K – 16-20 may be
 an easier BW.
 L – 24-20 7-11
 17-14 10-17 21-14
 18-22 25-18 15-22
 14-9 22-26 9-5
 26-30 5-1 2-7 BW,



81. Black moves

maybe with extra kings.

M – 6-10 22-17 11-16 9-5 15-18 BW.

N – See the second diagram. 6-10! 5-1 10-15 13-9 15-19 1-5* 2-7 9-6*
 7-11 5-9 11-16 6-2 8-12 9-14* 18-22 14-18 22-25 (22-26 27-24* draw)
 27-23 or 18-22 draw.

58. Ian Caws – Keith Foubister, 2013 English Open, round 3

9-14 22-17 6-9 17-13 1-6 25-22 14-17 21-14 9-25 29-22 11-15(A) 24-19(B)
 15-24 28-19 8-11 32-28(C) 11-15(D) 23-18 15-24 28-19 4-8 27-24 8-11
 26-23 11-15 18-11 7-16 24-20 3-7 20-11 7-16 22-17(E) {diagram}
 16-20?(F) 31-27 5-9(G) 23-18 2-7 30-25 7-11 25-21 11-16 27-23 20-24
 17-14 10-17 21-5 6-10 5-1 24-27 1-6 10-14 18-9 27-31 19-15 31-27 23-18
 27-23 WW

A – 10-15 may be the popular move.

B – Several moves are popular here, which may be why the preceding 11-15 is relatively unpopular.

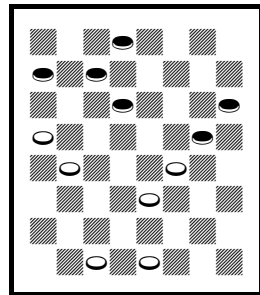
C – 22-18 draw, *Master Play* p.176 v.24C.

D – 11-16 draw, KingsRow, then perhaps 22-18 draw.

E – Or 22-18 draw.

F – See the diagram. 5-9 30-25 or 31-27 draw.

G – 2-7 also loses.

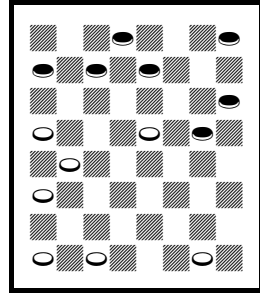


82. Black draws

59. Keith Foubister – Ian Caws, 2013 English Open, round 3

9-14 22-17 6-9 17-13 1-6 25-22 11-15?(A) 24-19?(B) 15-24 28-19 8-11(C)
 22-18 11-15 18-11 7-16 26-22 3-7 22-17 14-18 23-14 9-18 19-15(D) 10-19
 27-23* 19-26 31-15 {diagram} 4-8?(E) 15-10! 6-15 13-9 5-14 17-3 15-19
 21-17 19-23 17-13 16-19 13-9 19-24 9-5 24-27 5-1 27-31 1-5 31-27 5-9
 27-24 9-14 8-11 14-18 24-27 18-22 27-31 3-8 11-16 8-11 16-20 11-15
 23-27 32-23 20-24 15-19 24-28 30-25 28-32 22-26 31-22 25-18 32-27
 29-25 2-6 25-21 6-9 18-14 27-18 14-5 18-14 5-1 14-10 21-17 10-7 WW

- A – Apparently, this loses. 14-17 is standard, as in the preceding game.
- B – 22-17 WW, P. Ottey – M. Long, 1985 I-D.
- C – 14-17 draw Published Play.
- D – 29-25 draw, KingsRow.
- E – See the diagram. 4-8? falls into a shot. 7-10 or others draw.



83. Black draws

Round 4

60. Shane McCosker – Sean McElkenny, 2013 English Open, round 4

11-16 22-18 16-19 24-15 10-19 23-16 12-19 27-24(A) 7-10 24-15 10-19
 25-22(B) 6-10(C) 18-15 1-6 22-17 8-11 15-8 4-11 17-14 9-18 26-23 19-26
 31-8 3-12 29-25 5-9 25-22 9-14 32-27 12-16 27-23 6-9 22-18 16-19 23-16
 14-23 16-11 23-27 28-24 27-31 24-19 9-14 11-8 31-27 {diagram} 8-3?(D)
 27-23 19-16 14-17 21-7 2-20 3-7 20-24 7-2 24-27 2-6 23-18 6-1 27-31 1-5
 31-27 5-1 27-23 1-5 18-14 5-1 23-18 1-5 18-15 5-1 15-10(E) 1-5 10-6 5-1
 14-10 30-26(F) 6-9 26-23 10-15 1-5 9-14 5-1 BW

A – 25-22 draw Published Play.

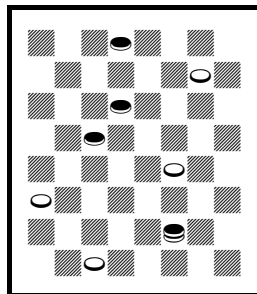
B – 21-17 draw Published Play.

C – 8-11 or 9-14 have been played.

D – See the diagram. 19-16 14-17 21-7 2-20
 30-26 20-24 8-3 24-28 26-22 27-23 22-17 23-18
 3-7* 38-32 7-2* 32-27 2-6* draw.

E – Classic First Position.

F – Hastens the end, but worth a try.



84. Black draws

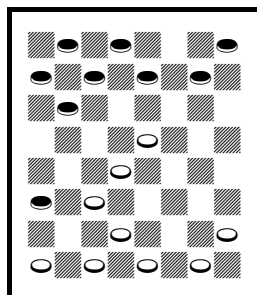
61. Sean McElkenny – Shane McCosker, 2013 English Open, round 4

11-16 22-18 16-19 24-15 10-19 23-16 12-19 21-17 7-10 17-14(A) 10-17
 27-24 3-7 24-15 17-21(B) 25-22 {diagram} 9-14?(C) 18-9 6-13 15-10 7-14
 22-17 13-22 26-10 5-9 29-25 8-12 25-22 9-14 28-24 12-16 24-20 16-19
 31-26 19-24 20-16 4-8 16-12 8-11 10-7 11-15 32-28 WW

A – 25-21 draw Published Play.

B – 7-11 draw, P. Thompson – L. Taylor, 1960
 US National.

C – See the diagram. 9-13 32-27 8-12 probably
 draws, although 27-24 or 27-23 or 22-17 may be
 promising.



85. Black draws?

62. Lindus Edwards – Colin Young, 2013 English Open, round 4

11-16 23-18 8-11 18-14 9-18 22-8 4-11 25-22(A) 16-20 22-18(B) 10-15
26-22 6-10(C) 30-26 5-9 26-23 9-13 24-19 15-24 28-19 2-6 draw(D)

A – 26-23 draw Published Play.

B – 26-23 draw Published Play.

C – 7-10 draw, E. Scheidt – D. McGrath, 1958 US National, also transposing into M. Tinsley – A. Huggins, *British Draughts Journal* g.239.

D – 29-25 transposes into E. Markusic – D. Hyde, 1983 International Match, which White won later on.

63. Colin Young – Lindus Edwards, 2013 English Open, round 4

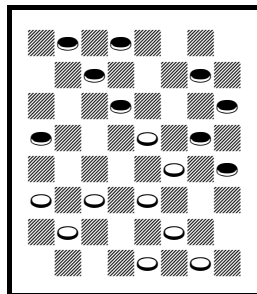
11-16 23-18 8-11 18-14 9-18 22-8 4-11 25-22 16-20 24-19 11-15 26-23
15-24 28-19 7-11 30-26 11-16(A) 22-18 5-9 26-22 9-13(B) 29-25 3-8
18-15(C) {diagram} draw(D)

A – 11-15 draw Published Play.

B – 1-5?! 18-15! (29-25?! draw, Gittleson – R. Sallaway, 1909 London Ty.) 3-8 31-26 9-13
22-18 10-14 18-9 5-14 26-22 2-7 22-18 6-9
15-10 7-11 19-15 (or 10-6 to same) 13-17 10-6
17-22 15-10 22-26 6-2 (10-7 26-30 draw) 9-13
(now or later) 18-9 26-31 (26-30 may lose)
32-28 31-24 28-19 11-15 looks like a draw.

C – 21-17 8-11 18-14 10-15* 14-10 15-19*
23-18* 19-23* draw.

D – See the diagram. Continue 10-14 22-18*
1-5* 18-9 5-14 15-10 6-24 23-19 16-23 27-9
draw, as Black can king somehow.



86. Black draws

64. Con Boyle – Jim O'Brien, 2013 English Open, round 4

11-15 24-20 15-18 22-15 10-19 23-16 12-19 25-22 9-14(A) 22-17 7-10
27-24(B) 2-7 24-15 10-19 17-10 6-15 21-17 8-12(C) 29-25 5-9 32-27 4-8
25-21 1-6 27-24 7-10 31-27 8-11?(D) {diagram} 17-14?(E) 9-18 26-23
19-26 30-7 3-10 27-23?(F) 10-14 24-19 15-24 28-19 BW

A – 8-11 draw Published Play.

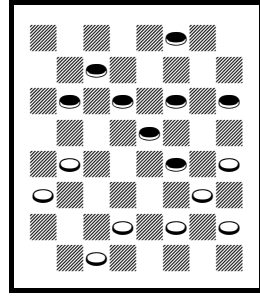
B – 29-25 draw, W. Benstead – anonymous, *Draughts World* g.336.

C – 8-11 should draw, W. Nesbitt – R. Phelps, 1958 US National. 5-9 draw, W. Steere – N. Gibbs, *Badger Checker Player* g.1897.

D – 3-7 draw, with a variety of continuations.

E – See the diagram. 17-13! 9-14 27-23 3-7 23-16 12-19 26-23 19-26 30-23 15-18 23-19 18-23 19-16 WW.

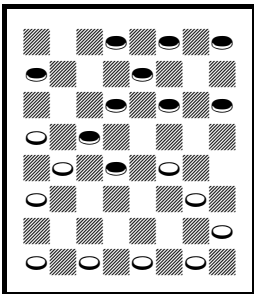
F – 21-17* 15-18* 24-19 6-9* 27-24 draw.



87. White wins

65. Ian Caws – Graham Young, 2013 English Open, round 4

10-15 23-19 6-10 21-17 9-14(A) 17-13(B) 11-16 25-21 16-23 27-9 5-14 22-17 1-5?(C) 26-23 15-18 23-19 8-11 {diagram} 13-9?(D) 11-16 31-26 16-23 26-19 7-11 24-20 18-23 9-6 2-9 17-13 14-18 13-6 10-14 19-15 23-27 15-8 4-11 32-23 18-27 6-2 14-18 2-6 18-23 21-17 27-32 17-14 32-27 14-10 11-15 30-25 23-26 25-22 27-23 22-17 26-30 17-13 23-19 6-2 19-24 28-19 15-24 2-7 24-28 7-11 28-32 11-15 32-28 10-6 30-26 6-2 26-23 15-11 12-16 2-6 16-19 29-25 19-24 25-21 24-27 21-17 27-31 17-14 23-26 14-10 5-9 6-2 9-14 10-6 14-17 6-1 17-21 13-9 21-25 9-5 25-30 1-6 28-32 5-1 32-28 {diagram} ... BW(E)



88. White wins

A – Seems to be OK. 1-6 draw Published Play.

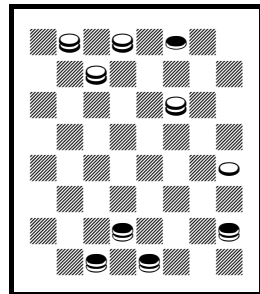
B – Or 25-21 first.

C – Loses. 2-6 draw, Smith and Slade.

D – See the first diagram. 29-25 11-15 13-9 7-11 9-6 2-9 17-13 WW.

E – See the second

diagram. Draw. They played on for a long time, and the game mysteriously ended in a BW. The scoresheet has missing moves.

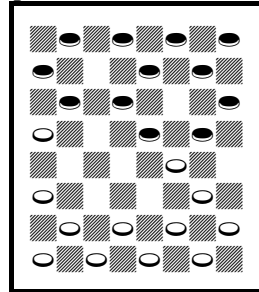


89. White moves

66. Graham Young – Ian Caws, 2013 English Open, round 4

10-15 23-19 6-10 22-17 11-16 17-13 WW(A)
{diagram}

A – See the diagram. These games do happen in real life.



90. Black moves

67. Brian Poole – A. C. Rose, 2013 English Open, round 4

9-13 24-20 11-16(A) 20-11 8-15 23-18 7-11(B) 28-24(C) 6-9(D) 26-23 3-7
30-26 4-8 32-28 1-6 24-19 15-24 28-19(E) 11-16 18-15?(F) {diagram}
7-11?(G) 21-17* 11-18 22-15 13-22 25-18 9-14 18-9 5-14 15-11 8-24
27-11 10-15 11-8 12-16 31-27 15-19 29-25 14-17 25-21* 17-22 26-17
19-26 27-24 16-20 24-19 6-9 19-16 26-31 16-11 31-27 8-3 draw

A – Twilight Zone.

B – 3-8 draw Published Play.

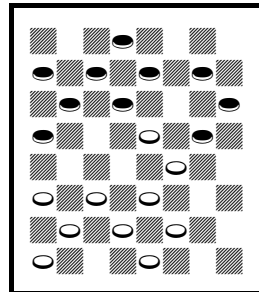
C – 18-14 draw Published Play, with plenty of White wins.

D – 5-9 draw, A. Skelding – A. Kopko, *Badger Checker Player* g.855.

E – Not bad. 27-20 draw, *Master Play* p.47 v.29Z.

F – 22-17 draw.

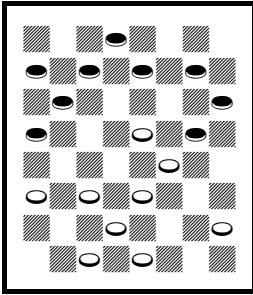
G – See the diagram. 9-14 22-18 7-11 BW.



91. Black wins

68. A. C. Rose – Brian Poole, 2013 English Open, round 4

9-13 24-20 11-16 20-11 8-15 22-18(A) 15-22 25-18(B) 4-8(C) 29-25 8-11
25-22 6-9 27-24 10-15 24-19 15-24 28-19 1-6 32-28(D) 11-16(E) 18-15
3-8?(F) {diagram} 23-18?(G) 16-23 26-19 9-14 18-9 5-14 30-25* 14-18
{diagram} 31-27?(H) 7-11 27-24 2-7 24-20 7-10 28-24 18-23 22-18 23-26
18-14 10-17 21-14 11-18 25-21 26-31 14-9 6-10 9-6 31-27 6-2 18-22 BW



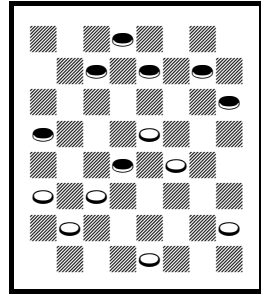
92. White wins

A – 23-18 draw
Published Play.

B – = 9-13 24-20
11-15 22-17 13-22
25-11 8-15 Colors
Reversed in the
3-move books.

C – 12-16 draw
Published Play.

D – 22-17 should
draw, E. Fuller – H.
Cravens, 1972 US



93. White draws

National.

E – 6-10 draw.

F – 13-17 22-13 9-14 21-17! (13-9 6-13 15-10* 7-11* draw) 14-21 15-11 draw.

G – See the first diagram. 28-24! 7-11 15-10 (24-20 White strong) 6-15 19-10 16-20 10-7! 11-16 24-20 2-11 30-25 9-14 22-18 13-17 18-9 5-14 25-22 WW.

H – See the second diagram. 28-24* 18-23 (7-11 15-10 draw) 15-11* 7-16 24-20 8-11 19-15 draw.

69. Keith Foubister – Ian Caws, 2013 English Open, round 4

9-13 24-20 10-14 22-17(A) 13-22 25-9 5-14 29-25 1-5?(B) 25-22 6-9?(C) 28-24?(D) 7-10 32-28 3-7 {diagram} 22-17?(E) 9-13 24-19 13-22 26-17 14-18 23-14 11-16 20-11 7-32 14-7 2-11 17-14 11-16 21-17 16-20 17-13 32-27 31-24 20-27 14-10 27-31 10-7 31-27 7-2 8-11 2-6 11-16 6-10 27-23 30-25 4-8 25-21 8-11 10-14 16-20 14-17 11-16 13-9 5-14 17-10 23-18 10-7 18-14 7-11 16-19 11-16 19-23 16-19 23-27 19-23 27-32 23-26 14-18 26-30 BW

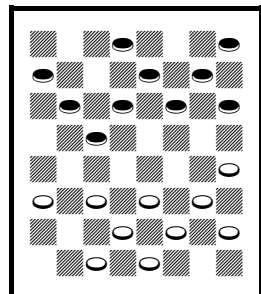
A – 22-18 draw Published Play.

B – May lose. 7-10 draw Published Play.

C – Probably does lose.

D – 22-17 WW, KingsRow with no continuation.

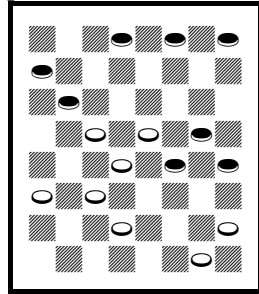
E – See the diagram. 24-19 11-16 20-11 8-24 28-19 4-8 draw, KingsRow.



94. White draws

70. John Jolliff – Leo Springer, 2013 English Open, round 4

11-16 21-17 9-13 25-21 5-9 23-18 1-5 18-15(A)
 10-19 24-15 7-11(B) 22-18 13-22 26-17
 9-13(C) 30-26(D) 13-22 26-17 16-19 31-26
 11-16 27-23 16-20! 23-16 12-19 29-25 8-12(E)
 25-22 12-16 17-14 6-9 {diagram} 14-10?(F)
 9-14 18-9 5-14 15-11 3-8 22-17 8-15 17-13
 15-18 10-6 2-9 13-6 4-8 BW

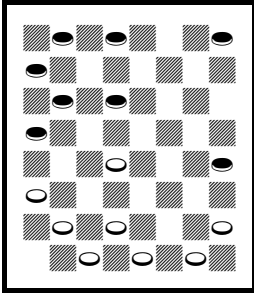


95. White draws

- A – 27-23 draw Published Play. KingsRow.
- B – Somewhat weak. 7-10 27-24 draw, KingsRow.
- C – 16-20 or 3-7 probably draw.
- D – 17-14! WW?
- E – Or others.
- F – See the diagram. 15-11* 2-6* 32-27 or 11-7 draw.

71. Leo Springer – John Jolliff, 2013 English Open, round 4

11-16 21-17 9-13 25-21 16-20(A) 29-25 10-14?(B) 17-10 7-14(C) 22-18(D)
 6-9(E) 24-19(F) 8-11 19-16(G) 12-19 23-7 14-23 27-18(H) 3-10 {diagram}
 25-22?(I) 2-7 30-25 9-14 18-9 5-14 31-27?(J) 1-6! 27-23 {diagram}
 14-17?(K) 21-14 10-17 25-21* 6-10 21-14 10-17 22-18 17-22 26-17 13-22
 18-14 22-25 23-19 25-30 19-16 30-26 14-9 26-23 9-6* 7-10 6-2 10-14
 16-11 14-17 11-7 17-22 7-3 22-25 2-7 draw



96. White wins

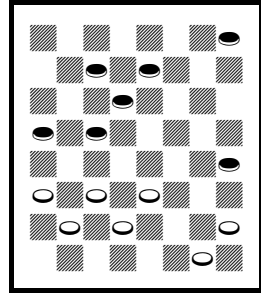
A – 16-19 or 5-9
draw Published
Play.

B – 8-11 draw, E.
Cottle – R. Moss,
*Badger Checker
Player* g.1237.

C – 6-15 WW,
KingsRow.

D – 24-19 WW,
KingsRow

E – Others lose.



97. Black wins

F – 25-22 WW, KingsRow.

G – 25-22 or others win.

H – 26-19 also wins.

I – See the first diagram. 26-23 2-7 23-19 9-14 18-9 5-14 19-16 10-15
32-27 1-6 30-26 6-10 16-12 14-17 21-14 10-17 25-21 17-22 26-17 13-22
31-26 WW.

J – 26-23 draw.

K – See the second diagram. 10-15 23-19 15-24 28-19 20-24 BW.

Round 5

72. Colin Young – Shane McCosker, 2013 English Open, round 5

11-15 23-18 15-19 24-15 10-19 27-24 7-10 24-15 10-19 21-17(A) 12-16
 18-15 8-12 22-18 3-7 25-21 {diagram} 4-8?(B) 17-14(C) 6-10(D) 15-6 1-17
 21-14 8-11 29-25 19-23 26-19 16-23 28-24 11-16 24-19(E) 16-20 19-15
 20-24 32-28 24-27 31-24 23-27 15-10 7-11 24-20 27-31 10-7 31-27 7-3 2-6
 3-8 11-15 18-11 9-18 25-22 18-25 30-21 WW

A – One scoresheet says 22-17, but we soon find that that was not the move.

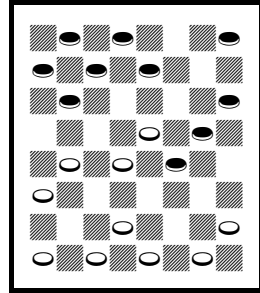
B – See the diagram. 19-23 draw, M. Tinsley – E. Fuller, 1975 Florida Open, in *Checkers the Tinsley Way*.

C – 29-25 WW.

D – 16-20 WW?

E – One of the scoresheets says 32-28 (which draws) followed by some illegal moves.

F – 2-7 or others draw.



98. Black draws

73. Shane McCosker – Colin Young, 2013 English Open, round 5

11-15 23-18 15-19 24x15 10x19 27-24 7-10 24x15 10x19 21-17 8-11(A)
 18-15 11x18 22x15 9-13(B) 32-27 13x22 25x18 3-7 27-24(C) 4-8(D) 24-20
 5-9(E) 29-25 7-11* 25-21 9-14 18x9 6x13?(F) {diagram} 30-25?(G) 11x18
 26-23 18x27 31x15 2-7 25-22* 7-10 15x6 1x10 22-18* 8-11 18-14* 10x17
 21x14 13-17 14-10 17-22 10-7(H) 22-26 7-3 26-31 3-8 11-15 8-11 15-18(I)
 11-15 18-23 20-16 12x19 15x24 23-27 24-19 draw

A – 12-16 in the preceding game is standard.

B – 4-8 draw, M. Tinsley – E. Bruch, 1994 US National. 3-7 draw, twice in the 2009 WCM between R. King and A. Moiseyev.

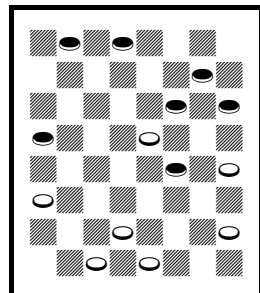
C – 29-25 draw, L. Keen – R. Hallett, 2010 US National.

D – 5-9 draw.

E – May be the only draw.

F – 11-18! draw.

G – See the diagram. 15-10! 11-15 26-23 19-26 31-22 15-19 30-26 1-5 22-18 5-9 20-16 WW.



99. White wins

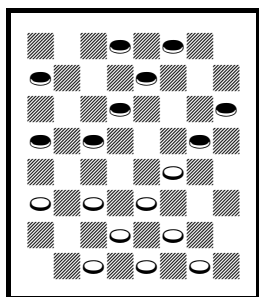
H – 28-24 transposes into *Robertson's Guide* p.298 v.66.

I – 15-19 draw Colors Reversed, B. Dobbins – J. Schwartz, 2005 GB v. US from 11-15

24-19 15-24 Colors Reversed.

74. Lindus Edwards – John Morgan, 2013 English Open, round 5

9-13 24-19 6-9 22-18 11-15 18-11 8-24 28-19 9-14(A) 25-22 4-8 22-18(B)
8-11 18-9 5-14 29-25 11-16(C) 25-22 1-5 {diagram} 23-18(D) 14-23 27-18
16-23 26-19 10-15 18-11 7-23 31-27 3-7(E) 27-18 7-10 30-26 10-14?(F)
18-9 5-14 26-23 12-16 32-27?(G) {diagram} 2-7?(H) 27-24(I) 16-20 24-19
20-24 22-18 24-27 18-9 27-31 9-6 7-10 23-18 31-26 WW



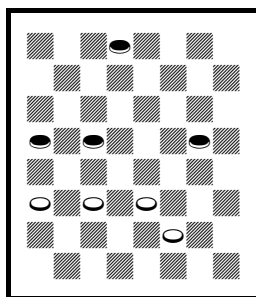
100. White moves

A – 4-8 draw
Published Play.

B – 29-25 draw
Published Play.

C – 11-15 or 1-6
draw Published
Play.

D – See the first
diagram. This is a
good innovation.
2 2 - 1 8 d r a w
Published Play.



101. Black draws

E – Or 23-26 draws.

F – 2-7 or others draw.

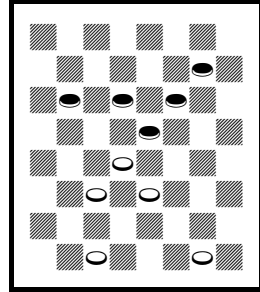
G – 32-28 WW.

H – See the second diagram. 16-20* 22-18 14-17! 21-14 13-17 23-19
17-22 18-15 22-26 19-16 26-31 27-23 20-24 15-11 24-28 14-10 31-26
23-19 26-23 19-15 28-32 16-12 23-19 11-8 19-16 8-4 32-27 draw.

I – 22-18? 16-19 draw.

75. John Morgan – Lindus Edwards, 2013 English Open, round 5

9-13 24-19 6-9 22-18 11-15 18-11 8-24 28-19
 4-8 21-17 13-22 25-18 8-11 29-25 9-14 18-9
 5-14 25-22 11-15 19-16 12-19 23-16 1-6 27-23
 7-11 16-7 2-11 31-27 3-8 23-18(A) 14-23 27-18
 6-9 26-23?(B) {diagram} 9-13?(C) 32-28* 8-12
 23-19* draw



102. Black wins

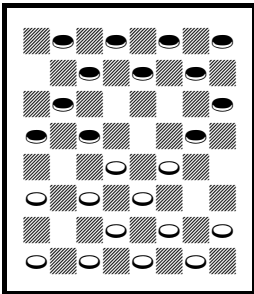
A – 32-28 draw, H. Cravens – M. Tinsley, 1978
 US National

B – 30-25* 8-12 25-21* 12-16 21-17 draw.

C – See the diagram. 8-12 32-28 12-16 BW.

76. A. C. Rose – Terry Bedlow, 2013 English Open, round 5

9-13 24-19 5-9 22-18 10-14(A) 25-22 11-16?(B) {diagram} 29-25?(C)
 16-20?(D) 18-15 8-11?(E) 15-8 4-11 19-15 11-18 22-15 1-5 26-22 14-18
 23-14 9-18 {diagram} 27-23?(F) 18-27 32-23 3-8 22-18 7-10 23-19
 5-9?(G) {diagram} 30-26?(H) 10-14 26-23 2-7* 25-22* 7-10* 31-27 12-16
 19-3 10-26 18-15 26-30 3-7 30-25 {diagram} 7-11?(I) 25-18 11-16 18-11
 16-7 14-18 BW



103. White wins

A – 11-15 draw
 published play.

B – 6-10 draw.

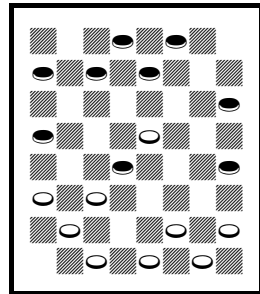
C – See the first
 diagram. 28-24
 16-20 18-15 WW.

D – 8-11 draw.

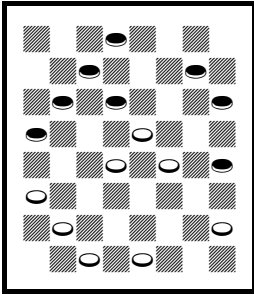
E – 7-10 should
 draw, E. Durgin – J.
 Hill, *Draughts*
World g.293 v.1.

F – See the second

diagram. 30-26 or 15-11 WW.

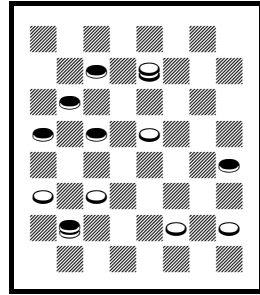


104. White wins



105. White wins

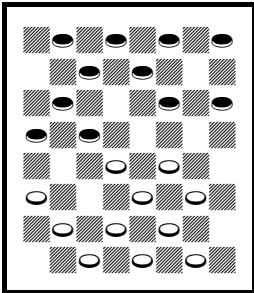
G – 10-14 draw.
 H – See the third diagram. 25-22
 10-14 28-24 WW.
 I – See the fourth diagram. 22-17
 13-22 7-10 draw.



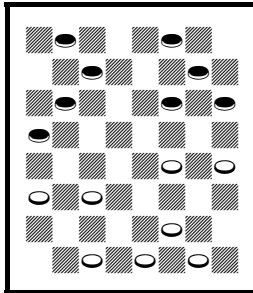
106. White draws

77. Terry Bedlow – A. C. Rose, 2013 English Open, round 5

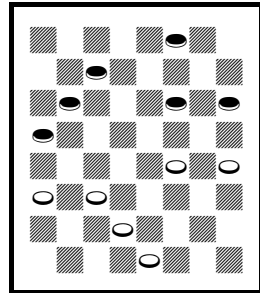
9-13 24-19 5-9 28-24 11-15 22-18 15-22 25-18 10-14?(A) 29-25 8-11
 {diagram} 25-22?(B) 7-10?(C) 24-20 4-8 19-15(D) 10-19 23-7 14-23 26-19
 2-11(E) {diagram} 30-26?(F) 11-15* 19-10 6-15 27-24 8-11 32-28 1-6
 24-19 15-24 28-19 {diagram} 3-7?(G) 22-18 6-10 18-14 9-18 19-15 10-19
 26-23 WW



107. White wins



108. White wins

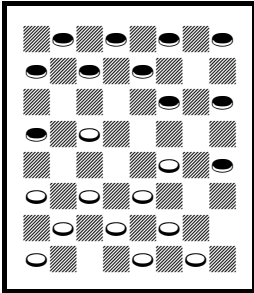


109. Black draws

A – A published loss. 1-5* draw Published Play.
 B – See the first diagram. 24-20 WW, *Master Play* p.72 v.9F.
 C – 6-10 draw.
 D – Or 27-24 or 32-28 WW.
 E – 3-10 loses.
 F – See the second diagram. 22-18 WW.
 G – See the third diagram. 6-10 22-17 draw.

78. Ian Caws – Leo Springer, 2013 English Open, round 5

10-15 22-17 9-13 26-22(A) 11-16(B) 30-26 16-20(C) 17-14 8-11 24-19
 15-24 28-19 {diagram} 4-8?(D) 22-18 6-10(E) 25-22 10-17 21-14 11-16
 14-9(F) 5-14 18-9 7-10 9-5?(G) {diagram} 8-11?(H) 22-18* 2-6 19-15?(I)
 10-19 32-28 3-8 29-25 13-17! 25-21 17-22 26-17 19-26 31-22 16-19 18-14
 6-9(J) 14-10 9-13 10-6 1-10 5-1 11-15 22-18 15-22 1-6 10-15 6-10 19-24
 10-19 24-31 19-23 22-25 17-14 25-30 14-10 8-11 10-6 11-16 BW



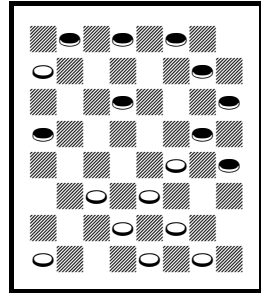
110. Black draws

A – Unusual. *Basic Checkers* says that 17-14 is the only viable attack.

B – 6-10 should draw, M. Borghetti – A. Moiseyev, 2013 WCM g.38.

C – 5-9 draw, R. Pask.

D – See the first diagram. 11-16!



111. Black win

should draw, S. Cronin – W. Ferguson, 1994 British Open.

E – 11-16 WW, KingsRow.

F – 29-25 may be an easier WW.

G – 29-25 10-14 22-18 1-5 25-21 3-7 26-22 7-10 9-6! 2-9 18-15 WW?

H – See the second diagram. 2-6! 22-18 13-17 18-15 10-14 26-22 17-26 31-22 6-9 22-18 14-17 15-10 17-22 BW.

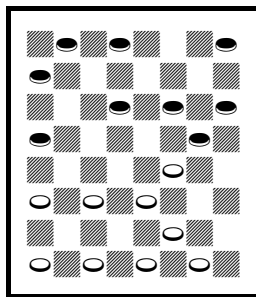
I – 26-22* 10-15 19-10 6-15 32-28 draw.

J – 11-16 BW.

79. Leo Springer – Ian Caws, 2013 English Open, round 5

10-15 22-17 9-13 17-14 6-10?(A) 24-19!(B) 15-24 28-19 10-17 21-14
 11-16 26-22 7-10 14-7 3-10 25-21 8-11 {diagram} 30-25?(C) 2-6?(D)
 22-18 10-15 19-10 6-22 25-18 4-8 18-14 1-6 WW(E)

- A – 11-16 draw Published Play.
- B – 23-19? should draw, R. Brown – R.
McMillan, 1898 Scottish Ty.
- C – See the diagram. 22-18 WW.
- D – 1-6 or others may draw.
- E – Continue 14-9 WW.



112. White win

Round 6

80. Lindus Edwards – Shane McCosker, 2013 English Open, round 6
10-14 23-19 11-16 26-23 9-13 draw(A)

A – Both games ended here. These two games are the only two from section A. Others can probably be found under Round ?, near the beginning of this book.

81. Graham Young – Joan Caws, 2013 English Open, round 6

11-16 22-18 16-20 18-14(A) 9-18 23-14 10-17 21-14 8-11 26-23(B) 4-8(C)
25-21(D) 11-15 29-25(E) 15-18(F) 30-26 6-9 26-22 7-11 22-15 11-18
31-26 8-11(G) {diagram} 26-22?(H) 11-15 23-19 2-6 19-10 6-15 14-10
12-16 22-17 9-13 17-14 16-19 27-23 19-26 24-19 15-24 28-19 26-30 19-16
30-26 16-11 26-30 11-7 1-6 10-1 3-17 21-14 30-21 BW

A – = 11-16 22-17 16-20 17-14 as in *Basic Checkers*.

B – 25-22 draw Published Play.

C – 11-15 draw Published Play.

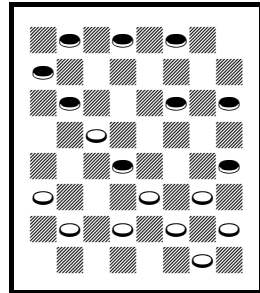
D – 25-22 draw, KingsRow.

E – 24-19 draw, KingsRow.

F – 8-11 should draw, E. Bennett – C. Munsey, 1939 NCA National.

G – 12-16 26-22 3-7 22-15 9-18 23-14 7-10 draw.

H – See the diagram. 23-19* 11-16 19-15* 9-13 or 3-8 draw.



113. White draws

82. Joan Caws – Graham Young, 2013 English Open, round 6

11-16 22-18 16-20 25-22 9-14?(A) 18-9 5-14 22-18(B) 14-17(C) 21-14
10-17 29-25 6-10(D) 25-22 17-21 18-14 10-17 22-13 8-11 24-19 11-16
19-15(E) 4-8 {diagram} 15-10?(F) 7-14 23-19 16-23 27-9 3-7 26-23
8-11?(G) 23-18?(H) 11-15 18-11 7-16 31-26??(I) {diagram} 2-7??(J) 26-22
7-11 22-18 16-19 18-14 11-16 14-10 19-23* 10-7 16-19* 7-3 12-16* 3-8
23-26* 30-23 19-26 {diagram} WW(K)

A – 8-11 draw Published Play.

B – 24-19 1-5 29-25 WW, KingsRow, then maybe 22-17 or 22-18 WW.

C – 1-5 White strong.

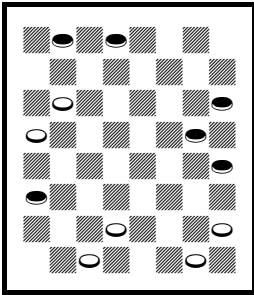
D – 8-11 WW, E. Ingram – L. Dibble, 1958 US National.

E – Or 13-9 WW.

F – See the first diagram. 23-18 2-6 (1-6 26-22 16-19 22-17 WW) 18-14 WW.

G – 12-16* 23-18 8-11 draw.

H – 23-19 20-24 31-26 21-25! 30-21 11-16 26-22 16-23 28-19 WW, as White kings.

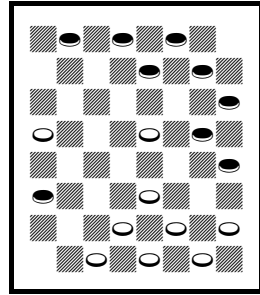


115. Black wins

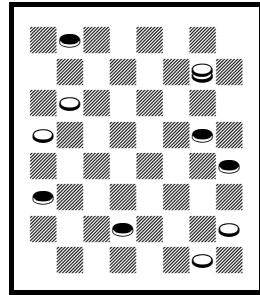
I – Others draw.

J – See the second diagram. 21-25 BW.

K – See the third diagram. Black may have misjudged this continuation: 9-5 16-19 32-27 26-31 8-12 31-24 12-16 19-23 draw.



114. White wins



116. White moves

83. John Jolliff – A. C. Rose, 2013 English Open, round 6

11-15 24-19(A) 15-24 28-19 8-11 22-18 10-14(B) 25-22 11-16 29-25(C) 4-8 18-15(D) 14-18 23-14 9-18 {diagram} 15-10(E) 16-23 22-15 7-14 26-19 5-9 30-26 2-7 27-24 14-18 31-27 7-10 24-20 10-14 26-23 1-5 27-24(F) 18-27 32-23 14-17 21-14 9-27 15-11 8-15 19-1 27-32 1-6 32-28 24-19 28-24 draw

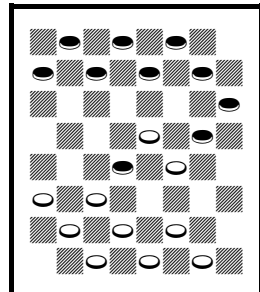
A – Second Double Corner.

B – 11-16 draw Published Play.

C – 22-17 draw Published Play.

D – 27-24 draw Published Play.

E – See the diagram. The game is probably original from here. 26-23 should draw, R. Bailey – J. Morrison, 1976 US National. 15-11 draw, J. Schwartz – A. Millhone, 2008 US National.

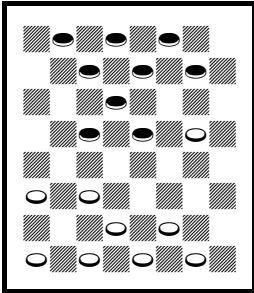


117. White draws

F – Or 20-16 draw.

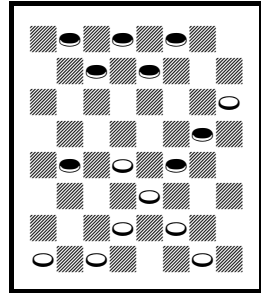
84. A. C. Rose – John Jolliff, 2013 English Open, round 6

11-15 24-19 15-24 28-19 8-11 22-18 9-14(A) 18-9 5-14 25-22 11-15
19-16(B) 12-19 23-16 4-8(C) {diagram} 16-12?(D) 8-11 27-23 11-16
31-27(E) 15-19(F) 22-18 14-17?(G) 21-14 10-17 {diagram} 29-25?(H) 3-8
12-3 17-21 3-10 6-31 BW



118. White draws

A – 11-16 draw
Published Play.
B – 32-28 draw.
C – 1-5 Black
strong, KingsRow.
D – See the first
diagram. The
21-17* shot draws.
E – 32-28 BW, I.
Keder – A.
Sorokina, 2004
Czech Open.



119. White draws

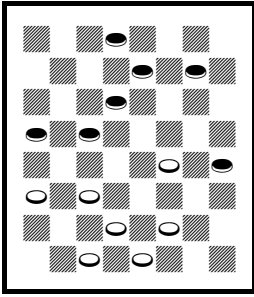
F – 7-11 BW.

G – 1-5 18-9 5-14 29-25 6-9 25-22 9-13 BW.

H – See the second diagram. White falls into a shot. 18-15 or 18-14 draw.

85. Ian Caws – Brian Poole, 2013 English Open, round 6

9-13 23-19 11-16 27-23 16-20(A) 32-27 8-11 19-16 12-19 24-8 4-11 22-18
6-9(B) 25-22(C) 9-14 18-9 5-14 22-18 1-5(D) 18-9 5-14 29-25(E) 11-15
25-22 3-8 23-19 15-24 28-19 {diagram} 7-11?(F) 19-16! 8-12 16-7 2-11
22-17?(G) 13-22 26-17 11-16 17-13 16-19 13-9 {diagram} 19-24?(H) 9-6
10-15 6-2 15-18 2-6 24-28 31-26 28-32 6-10 32-23 26-19 WW



120. Black draws

A – 10-14 draw
Published Play.

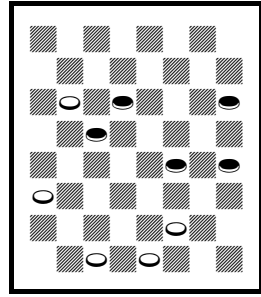
B – 10-15 draw
Published Play.

C – 18-14 draw, L.
Smith – J. Grant,
1970 US National.

D – 14-17? loses.

E – 23-19 draw,
KingsRow.

F – See the first
diagram. 14-17*



121. Black draws

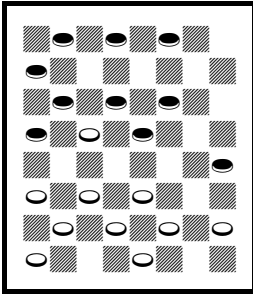
draw.

G – 26-23 11-15 (10-15 30-26 WW) 27-24 WW.

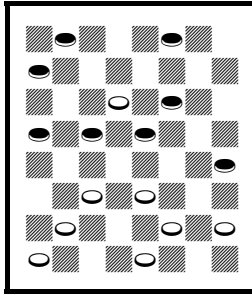
H – See the second diagram. 19-23 or 10-15 draw.

86. Brian Poole – Ian Caws, 2013 English Open, round 6

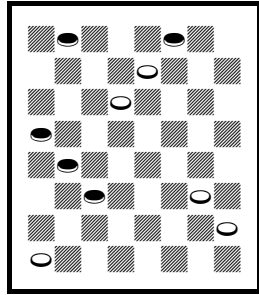
9-13 23-19 11-16 27-23 16-20 32-27 8-11 19-16 12-19 24-8 4-11 22-18
10-15(A) 25-22(B) 6-9(C) 30-25 7-10(D) 18-14 {diagram} 10-17?(E) 21-14
9-18 23-14 2-6 14-10 6-9(F) 26-23 9-14 {diagram} 22-18?(G) 15-22 25-9
5-14 23-19 11-15 19-16 15-18 16-11 18-22 11-7* 14-17 27-24?(H) 20-27
31-24 {diagram} 22-25?(I) 29-22 17-26 7-2 26-31 24-20 31-27 20-16 27-23
{diagram} 16-12?(J) 23-19 2-7 19-16 28-24 16-20 24-19 20-16 12-8 16-23
8-4 23-19 7-11 13-17 BW



122. Black draws



123. White wins



124. Black wins

A – Varies from the preceding game.

B – 18-14 is also popular.

C – 5-9 is also popular.

D – KingsRow plays this. 2-6 should draw, T. O'Grady – M. Tinsley, 1946 US National. 1-6 draw, A. Cameron – A. Long, 1952 US National.

E – See the first diagram. 9-18! 23-7 3-10 26-23 draw.

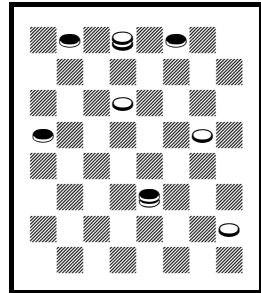
F – 15-19 27-23 WW.

G – See the second diagram. 28-24 11-16 22-18 WW.

H – 7-2* draw.

I – See the third diagram. 22-26 or 17-21 BW.

J – See the fourth diagram. 28-24 or 2-6 draw.

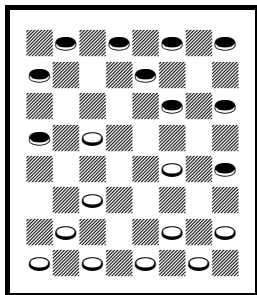


125. White draws

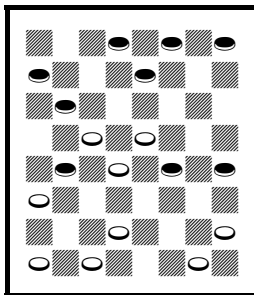
Round 7

87. Shane McCosker – Tony Boyle, 2013 English Open, round 7

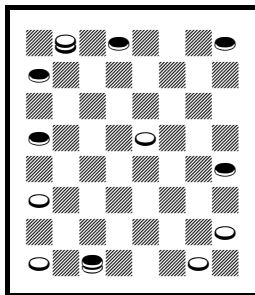
9-13 23-18 11-16(A) 18-14 10-17 21-14 6-9 26-23 9-18 23-14 16-20 24-19
 8-11?(B) {diagram} 22-18?(C) 1-6 27-23 13-17 25-21 6-9 19-15(D) 11-16
 31-26?(E) 16-19?(F) 23-16 12-19 {diagram} 26-22?(G) 17-26 30-16 7-11
 15-8 3-19 14-10 19-23?(H) 10-6 9-13 6-1 23-26 18-15 26-30 {diagram}
 29-25?(I) 4-8 25-22 30-25 22-18 25-30 18-14 30-26 14-10 26-23 BW



126. White wins



127. White draws



128. White draws

A – Wilderness 2.

B – A published loss. 1-6* draw Published Play.

C – See the first diagram. 22-17* WW Published Play.

D – 30-26 draw, KingsRow.

E – 32-27 or 15-10 draw, KingsRow.

F – 4-8 29-25 Black strong, KingsRow, then 16-19 Black strong.

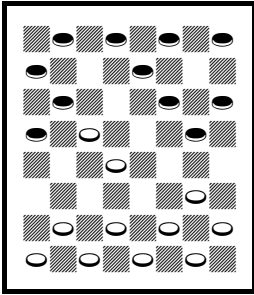
G – See the second diagram. 29-25 4-8 25-22 9-13 15-11* 7-16 14-10
 draw, KingsRow.

H – 4-8 10-6 9-13 6-1 8-11 BW.

I – See the third diagram. 15-11! 30-26 32-27 26-22 28-24 22-18 24-19
 18-14 19-16 14-10 29-25 10-7 1-6 draw.

88. Tony Boyle – Shane McCosker, 2013 English Open, round 7

9-13 23-18 11-16 18-14 10-17 21-14 8-11?(A) 22-18 6-9 {diagram}
 25-21?(B) 16-20?(C) 24-19 11-16 27-23 4-8 29-25 2-6 25-22(D) 6-10
 32-27 10-17 21-14 7-10 14-7 3-10 {diagram} 19-15?(E) 10-19 27-24 20-27
 31-15 13-17 22-6 1-19 18-14 8-11 14-10 19-24 28-19 11-15 10-7 15-24
 23-19 16-23 26-19 draw



129. White wins

A – A very popular published loss. 6-9* draw Published Play.

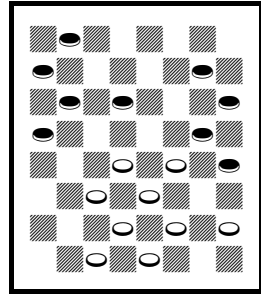
B – See the first diagram. 24-20 WW Published Play.

C – 1-6 draw Published Play.

D – 26-22! WW, 10-6 5-1 6-10 30-25(O) 23-26

25-21 26-30 27-23 WW, KingsRow.

E – See the second diagram. 18-15 WW, *Master Play* p.48 v.30o.



130. White wins

89. Lindus Edwards – Jim O’Brien, 2013 English Open, round 7

9-14 23-18(A) 14-23 27-18 12-16 21-17?(B) 16-20! 31-27 11-15 18-11 8-15 26-23 4-8 25-21 5-9 17-13 8-11 30-25 3-8(C) 22-17(D) 9-14 25-22 8-12 23-19 1-5 19-16 12-19 {diagram} 22-18(E) 14-23 BW

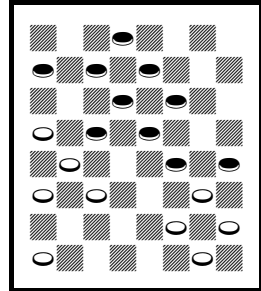
A – The Double Cross, still difficult.

B – BW, *Basic Checkers*. 18-14* draw Published Play.

C – 1-5 BW.

D – 23-19 BW?

E – See the diagram before this move.



131. White moves

90. Jim O’Brien – Lindus Edwards, 2013 English Open, round 7

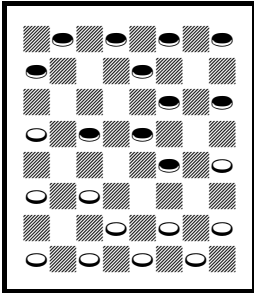
9-14 23-18 14-23 27-18 12-16 18-14 10-17 21-14 6-9 14-10 7-14 22-18 14-23 26-12 11-16(A) 25-22 9-14 29-25 8-11 30-26 11-15 26-23 2-6 24-19 15-24 28-19 6-10 22-18 4-8 18-9 5-14 25-22 8-11 31-26 11-15 32-28 draw(B)

A – 11-15 draw Published Play.

B – Draw, A. Coulter – R. Hayes, 1957 Ryan Memorial Mail Ty.

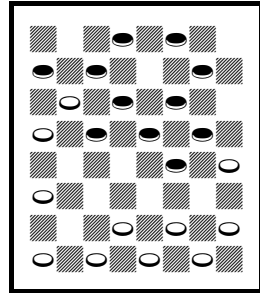
91. Ted Bedlow – Graham Young, 2013 English Open, round 7

10-15 23-19 11-16(A) 19-10 6-15 21-17 8-11(B) 17-13 9-14!(C) 24-20(D)
 16-19 25-21 {diagram} 12-16?(E) 22-17?(F) 7-10* 13-9?(G) 1-6 17-13
 4-8?(H) {diagram} 27-24?(I) 3-7(J) 29-25 14-18 26-22 5-14 22-17
 {diagram} 8-12?(K) 31-27* 6-9* 13-6 2-9 17-13 {diagram} 19-23?(L) 13-6
 14-17 21-14 10-17 6-2 17-22 25-21 22-26 21-17 26-31 17-14 31-26 2-6
 16-19 6-10 26-22 10-3 12-16 3-8 22-17 14-9(M) 17-14 9-5(N) 14-10 8-12



132. Black draws

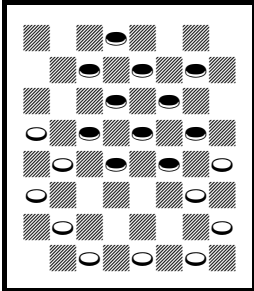
A – Gemini 2.
 B – 7-10 draw
 Published Play.
 C – 1-6 White
 strong, A. Moiseyev
 – E. Lowder, 2004
 US National.
 D – 22-18 may be
 interesting.
 E – See the first
 diagram. 7-10 draw,
 KingsRow.



133. White draws

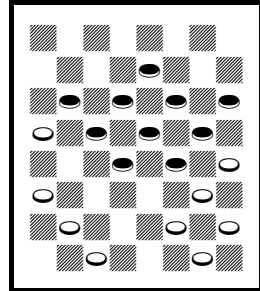
F – 27-23 4-8 32-27 7-10 30-25 WW.
 G – 27-24 or 29-25 draw, KingsRow.
 H – 14-18 BW.

I – See the second diagram. 27-23* 8-12* 29-25 19-24 or 3-7 draw.



134. Black wins

J – 14-18 BW.
 K – See the third
 diagram. 18-23!
 31-26 8-12 BW.
 L – See the fourth
 diagram. 18-23!
 27-18 14-23 13-6
 10-14 or 23-26
 draw.
 M – 30-25 WW.
 N – 8-12 14-5 30-25
 WW.

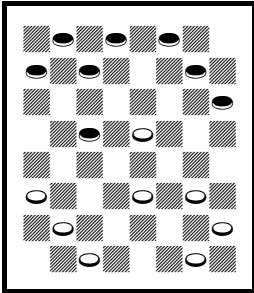


135. Black draws

O – 1-6 10-1 30-25 WW.

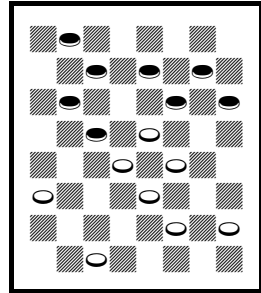
92. Graham Young – Ted Bedlow, 2013 English Open, round 7

10-15 23-19 11-16 19-10 7-14 22-18 14-23(A) 27-18 16-20 25-22(B) 20-27
 31-24 8-11 29-25 4-8 18-15?(C) 11-18 22-15 9-14(D) 26-23?(E) {diagram}
 5-9?(F) 25-22?(G) 3-7 22-18 7-11 32-27 2-7(H) 24-19 {diagram} 7-10?(I)
 28-24?(J) 12-16* 19-3 10-28 27-24 11-16 24-20 16-19 23-16 14-23 16-11
 23-27 11-7 27-31 7-2 1-5 20-16 31-27 16-12 27-23 12-8 23-18 8-4 18-22
 4-8 28-32 8-11 32-27 2-7 6-10 7-14 9-18 {diagram} BW(K)



136. Black wins

A – = 10-15 22-17
 11-16 23-19 16-23
 2 6-10 Colors
 Reversed.
 B – 24-19 draw
 Published Play.
 C – 21-17 or others
 draw.
 D – 12-16 BW?
 E – 24-19 5-9 or 2-7
 draw.
 F – See the first



137. Black wins

diagram. 3-7 23-19 7-10 BW.

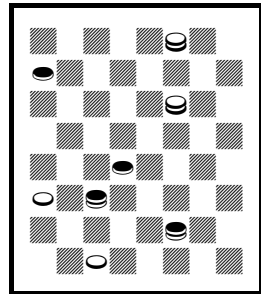
G – 24-19* 2-7 draw.

H – 1-5 BW. strong, Published Play.

I – See the second diagram. 11-16 30-25 16-20
 28-24 7-11 25-22 6-10 BW.

J – 27-24 9-13 WW.

K – See the third diagram. 3-7 18-23 7-2 27-24
 2-6 23-27 11-7 27-32 (27-31 30-26 22-18 7-10
 draw) 7-10 22-18 10-7 draw



138. White draws

93. A. C. Rose – Keith Foubister, 2013 English Open, round 7

9-13 24-20 11-16(A) 20-11 7-16(B) 22-18(C) 3-7?(D) 25-22(E) 8-11 28-24
 4-8 {diagram} 24-19?(F) 16-20?(G) 19-16(H) 12-19 23-16 8-12(I) 32-28
 12-19 27-24 20-27 31-8 7-11 28-24 5-9 8-4 1-5 29-25 9-14 18-9 5-14 22-18
 14-23 26-19 2-7 25-22 11-15 4-8 7-11 8-3 11-16 19-12 15-18 22-15 10-28
 30-26 28-32 26-23 32-27 23-19 6-10 12-8 10-14 19-15 13-17 3-7 17-22
 7-10 14-18 10-14 18-23 15-10 22-26 8-3 26-31 21-17 23-26 17-13 WW(J)

A – Twilight Zone.

B – T. Canning informs us that this is safer than 8-15.

C – 28-24 draw Published Play.

D – 16-19 draw Published Play.

E – 18-14 WW, KingsRow.

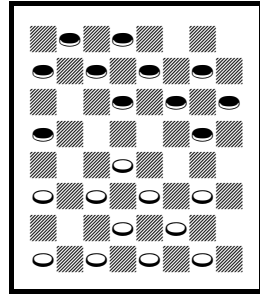
F – See the diagram. 24-19? may draw. 24-20! WW.

G – 5-9! 32-28 1-5 29-25 10-14* 27-24* 16-20* 19-15* 20-27 31-24 7-10 24-20* draw.

H – Or others win.

I – 20-24 27-20 8-12 29-25 12-19 18-15 WW.

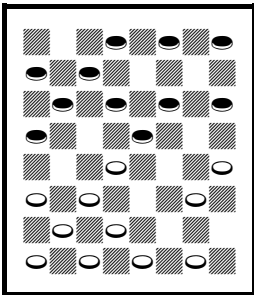
J – The game went on for another 73 moves (ply).



139. White wins

94. Keith Foubister – A. C. Rose, 2013 English Open, round 7

9-13 24-20 11-16 20-11 8-15 28-24(A) 7-11(B) 24-20 5-9 23-18 1-5 27-24 {diagram} 3-7?(C) 26-23 4-8 23-19 9-14 18-9 5-14 22-17 13-22 25-9 6-13 30-26 15-18 21-17 13-22 26-17 18-23(D) 29-25 2-6 25-21 6-9 17-13 9-14 13-9 14-17 21-14 10-17 9-6 17-22 6-2 7-10 32-28 10-14 {diagram} WW(E)



140. Black draws

A – 23-18! draw, KingsRow.

B – Probably draws.

15-19 draw, D.

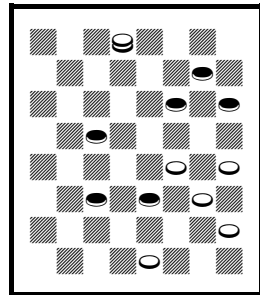
C a y t o n ' s Compilation p.37C.

C – See the first diagram. 12-16 or 4 – 8 d r a w ,

KingsRow.

D – 18-22 WW, A.

Long – M. Tinsley,



141. White wins

1954 National from 9-13 23-18 11-15.

E – See the second diagram. The scoresheet says "Black win," a typo, as White wins the piece with 2-7.

Round 8

95. Francis McNally – Shane McCosker, 2013 English Open, round 8

10-14 23-19 11-16(A) 26-23(B) 16-20(C) 30-26 9-13(D) 22-17(E) 13-22
25-9 5-14 29-25 8-11 19-16 12-19 24-8 4-11 25-22 6-10 23-19(F)
{diagram} 1-6(G) 22-17 6-9 17-13 11-15* 13-6 15-24 28-19 2-9 26-23 9-13
23-18 14-23 27-18 13-17* 21-14 10-17 draw

A – The second game was agreed drawn, as it would not affect the tournament standings.

B – 19-15 draw Published Play.

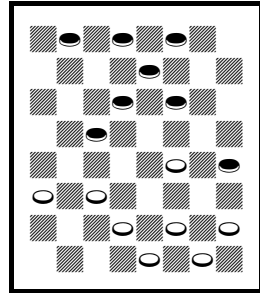
C – 9-13 draw Published Play.

D – 8-11 draw Published Play.

E – Or 22-18 draw, W. Murray – N. McVean, Shearer Mail Ty. in *Shearer's Handbook* p.31 v.4.

F – = 10-15 23-18 12-16 26-23 16-19 23-16
11-20 18-11 8-15 22-18 15-22 25-18 4-8 24-19
8-11 29-25 9-14 18-9 5-14 25-22 6-10 30-26 in
Kear's Encyclopedia p.232 v.38.

G – See the diagram. 11-15 draw Published Play.



142. Black draws

96. Tony Boyle – Lindus Edwards, 2013 English Open, round 8

10-15 23-18 6-10 18-14 9-18 24-19 15-24 22-6 2-9(A) 28-19 7-10 27-23
3-7(B) 25-22(C) 11-15* 32-28 15-24 28-19 8-11 22-17 4-8 {diagram}
29-25?!(D) 9-14! 23-18?!(E) 14-23 17-14 10-17 21-14 11-16 19-15 1-6
26-19 16-23 25-22 7-11 22-18 6-9 15-10 11-16 10-6 16-20 6-2 23-27 BW

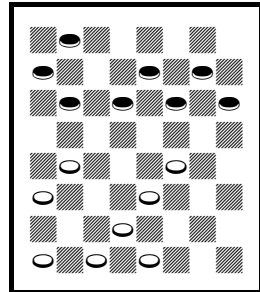
A – 1-10 draw Published Play.

B – 10-14?! White strong, V. Ogle – N. Banks, 1939 NCA National.

C – 21-17 White better.

D – See the diagram. This or White's next move may be the loser. 26-22 or 30-25 draw.

E – 17-13 11-15 19-16 12-19 23-16 8-12 13-9
12-19 9-6 7-11 25-22 draw?



143. White draws

97. Lindus Edwards – Tony Boyle, 2013 English Open, round 8

10-15 23-18 6-10 27-23(A) 1-6 32-27 15-19 24-15 10-19 23-16 12-19
18-15(B) 11-18 22-15 7-11 26-22(C) 11-18 22-15 9-14(D) 30-26 8-11 15-8
4-11 25-22 6-10 27-23 3-7 23-16 11-20 26-23 10-15 22-17 draw

A – 18-14 draw Published Play.

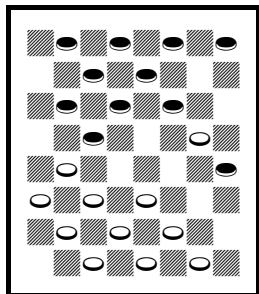
B – 21-17 draw Published Play.

C – 27-24 draw, KingsRow.

D – 8-11 should draw, H. Burton – C. Crawford, 1976 US National.

98. Graham Young – Keith Foubister, 2013 English Open, round 8

12-16 22-17 16-20 25-22(A) 11-15 29-25 9-14 24-19(B) 15-24 28-19
8-11(C) 19-16(D) 5-9(E) {diagram} 23-18?(F) 14-23 27-18 20-24 16-12(G)
11-16?(H) 17-14 10-17 21-5 16-20 22-17 7-10 25-21 4-8 {diagram}
30-25?(I) 10-14 17-10 6-29 BW



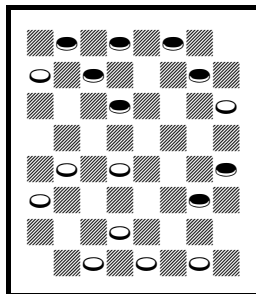
144. White draws

A – 17-14 draw
Published Play.

B – Or 17-13 draw
Published Play.

C – 7-11 draw, M.
Tinsley – D.
Lafferty, 1975
practice.

D – 17-13 draw, G.
Bonar – J. Ferrie,
*Wood's Checker
Studies.*



145. White wins

E – 4-8 draw, M. Krantz – H. Schreibman, 1952 NY Ty.

F – See the first diagram. 17-13 10-15 22-17 or 23-18 draw, KingsRow.

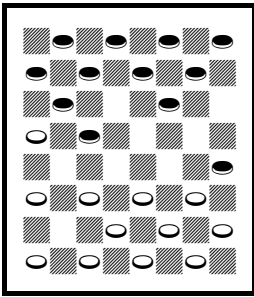
G – 17-14 may also lose.

H – 10-14 17-10 7-23 26-19 6-10 BW.

I – See the second diagram. 18-14 or others WW.

99. Keith Foubister – Graham Young, 2013 English Open, round 8

12-16 22-17 16-20 17-13(A) 10-14(B) 25-22 {diagram} 14-18?(C) 22-15
11-18 23-14 9-18 29-25 7-11(D) 24-19 3-7 19-16 {diagram} 7-10(E) 16-7
2-11 27-24 20-27 32-7 WW



146. Black draws

A – 17-14 draw
Published Play.

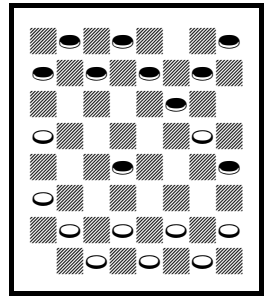
B – 11-15 draw
Published Play.

C – See the first
diagram. This
probably loses.

14-17 Black better.
D – 5-9 may also
lose.

E – See the second
diagram. Others

lose, but this creates a shot for the opponent.



147. Black moves

100. A. C. Rose – Ian Caws, 2013 English Open, round 8

9-13 22-18 11-16(A) 24-19(B) 13-17?(C) 21-14 10-17 25-22(D) 17-21
22-17 7-10 17-13(E) 10-14(F) 18-9 5-14 28-24(G) 3-7(H) 24-20 14-17(I)
20-11 7-16(J) 29-25 8-11 27-24(K) 16-20 32-28?(L) 20-27 31-24
{diagram} 4-8?(M) 24-20?(N) 1-5* 19-16 12-19 23-7 2-11 25-22 6-10 13-9
5-14 22-13 10-15?(O) 13-9 15-18 {diagram} 9-6?(P) 14-17* 6-2 8-12*
28-24 18-22* 26-23 22-26* 23-19 26-31 {diagram} BW(Q)

A – Wilderness 1.

B – = 9-13 24-19 11-16 22-18 in *Basic Checkers* and *Kear's Encyclopedia*.
18-14 is strongest.

C – = 9-14 24-19 11-16 22-18 14-17? Instead, 8-11 draw Published Play.

D – 25-21 WW, KingsRow.

E – 18-14 or others WW.

F – 8-11 may lose.

G – 29-25 probably wins.

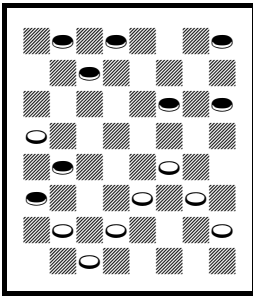
H – 16-20 may lose.

I – 1-5 may lose.

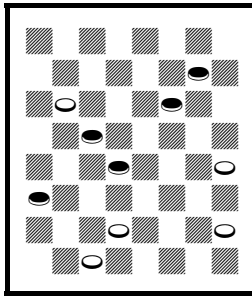
J – 8-24 also loses.

K – Or 25-22 WW.

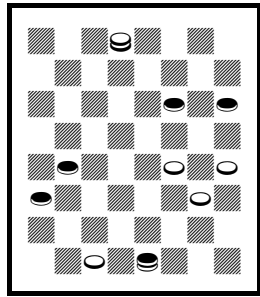
L – 25-22 20-27 31-24 1-5 24-20 2-7 19-16 WW.



148. Black draws



149. White wins



150. White draws

M – See the first diagram. 1-5* 24-20 (25-22? 21-25! BW) 4-8* draw.

N – 25-22! 1-5 22-18 5-9 24-20 2-7 19-15 7-10 23-19 10-14 26-23 17-22 15-10! 6-24 28-19 WW!

O – 11-15 draw.

P – See the second diagram. 28-24 14-17 24-19 18-22 26-23 22-26 23-18 WW.

Q – See the third diagram. Maybe continue 2-7 31-27 7-16 27-23 30-26 draw. The game went on for many moves, and ended in a BW, somehow.

101. Ian Caws – A. C. Rose, 2013 English Open, round 8

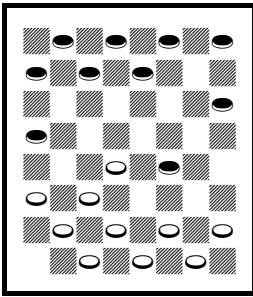
9-13 22-18 11-16 25-22(A) 16-19?(B) 24-15 10-19 23-16 12-19 29-25(C) 8-12?(D) {diagram} 18-15?(E) 7-10 27-24 5-9 22-18 10-14(F) 31-27(G) 14-23 27-18 3-7(H) 25-22 7-10 {diagram} 32-27?(I) 1-5?(J) 24-20 9-14 18-9 5-14 15-11?(K) 10-15?(L) {diagram} 26-23?(M) 19-26 30-23 15-19 23-16 12-19 27-24* 6-9 24-15 14-18 22-17 13-22 11-8 4-11 15-8 9-13 8-3 22-26 28-24 26-31 24-19 18-23 19-15 23-27 3-8 27-32 15-11 2-6 11-7 6-9 8-11 9-14 11-15 31-26 7-2 26-22 2-6 draw(N)

A – 18-14 is stronger.

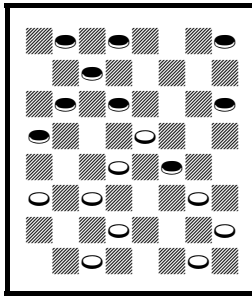
B – 8-11 = 9-13 22-18 12-16 25-22 8-12.

C – 27-24 White strong, KingsRow.

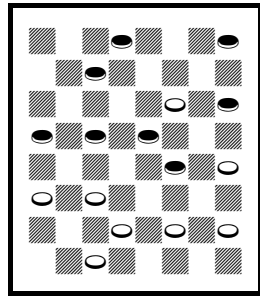
D – Loses. 5-9 draw, R. Beckwith – K. Shoesmith, 2006 Canadian Open.



151. White wins



152. White wins



153. White wins

E – See the first diagram. 27-24! 7-10 24-15 10-19 31-27 WW, with 32-27 later.

F – 4-8 24-20 draw, KingsRow, then 3-7* 25-22 9-14 or 7-11 draw.

G – Or 25-22 first.

H – 1-5! 25-22 9-14 18-9 5-14 15-11* 12-16 24-15 14-18 30-25 16-19 11-8 3-12 28-24 19-28 15-11 draw.

I – See the second diagram. 15-11 12-16 24-15 10-19 32-27 6-10 27-24 1-6 24-15 10-19 21-17 6-10 18-15 WW.

J – 12-16* 21-17* 16-20* 15-11 10-14 17-10 6-15 11-7* 30-25 or 27-23 draw.

K – 20-16! 14-18 30-25 10-14 15-11 or 16-11 WW.

L – 12-16* 27-24 or 26-23 draw.

M – See the third diagram. 27-23 12-16 (13-17 WW) 23-18 14-23 28-24 WW.

N – The game ended in a draw after many moves.

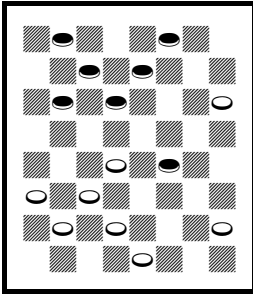
102. Terry Bedlow – Leo Springer, 2013 English Open, round 8

11-15 24-20 12-16 20-11 7-16 22-17(A) 9-13?(B) 27-24(C) 13-22 25-11 8-15 24-19 15-24 28-12 4-8 29-25 8-11 25-22 11-15 23-18 15-19 32-28(D) 2-7 30-25 5-9(E) {diagram} 31-27?(F) 10-14* 18-15* 14-18?(G) 15-11! 7-16 22-15 9-14(H) {diagram} 15-11?(I) 14-18* 11-7 3-10 12-8 16-20 8-3 10-14* 26-22 19-23 22-15 23-32 15-11 32-27 11-7 14-18 7-2 {diagram} 1-5?(J) 2-9 5-14 3-7 18-23 7-10 23-26 10-17 26-30 25-22 30-25 22-18 27-23 18-14 23-19 14-10 20-24 10-6 24-27 6-1 27-31 1-6 31-26 17-13 26-23 21-17 25-22 17-14 WW

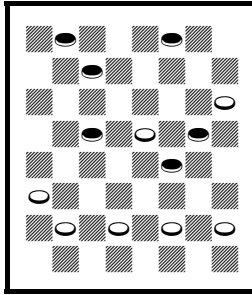
A – 22-18 draw Published Play.

B – Loses a piece. 9-14 draw Published Play.

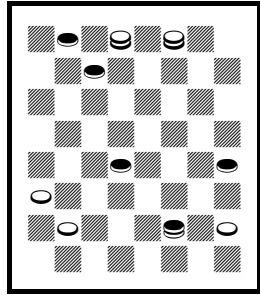
C – Or 28-24 WW.



154. White wins



155. White wins



156. White wins

D – 18-14 WW.

E – Or 7-11 31-27 or others WW.

F – See the first diagram. 18-14! (others win) 9-18 22-15 1-5 21-17! 5-9 12-8! 3-12 25-21 WW.

G – 9-13* 27-23 7-10 23-16 10-19 16-11 6-10 11-8 10-15 8-4 1-6* 4-8 3-7* 8-3 6-10* 12-8 14-18* draw.

H – 16-20 12-8 WW.

I – See the second diagram. 27-23 6-9 15-10 9-13 25-22 WW.

J – See the third diagram. 27-23 shot draws.

Round 9

The B section seems to have played one round more than the A section (maybe not, since scoresheets were often mis-numbered). Graham Young came from behind to win on tie-break.

103. Graham Young – A. C. Rose, 2013 English Open, final round

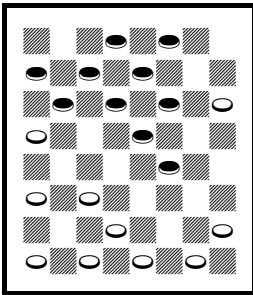
10-15 22-17 6-10 25-22(A) 11-16(B) 24-20?(C) 16-19 23-16 12-19 17-13
 1-6 27-23(D) 8-12 23-16 12-19 20-16 4-8 16-12 8-11 {diagram} 22-17(E)
 11-16 32-27(F) 16-20 26-23 19-26 30-23 15-18 23-14 9-18 29-25 10-15
 17-14 {diagram} 7-11?(G) 14-10* 6-9 13-6 2-9 27-24* 20-27 31-24
 18-22(H) 25-18 15-22 10-6 22-26 6-2 26-31 2-6 9-13 6-10 5-9 10-6 31-27
 24-20 27-23 {diagram} 21-17?(I) 13-22 6-13 BW

A – 17-14 draw Published Play.

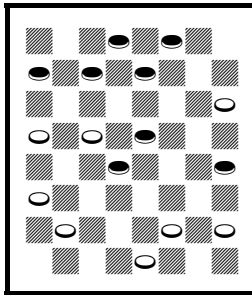
B – 1-6 draw Published Play.

C – May lose. 24-19 15-24 28-19 draw, W. Steere – S. Tribble, *Badger Checker Player* g.715.

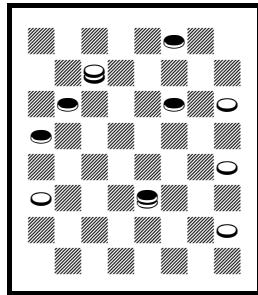
D – 22-17 (27-24 BW Published Play) Black strong, KingsRow, and 8-12 or 8-11 BW?



157. White moves



158. Black wins



159. White draws

E – See the first diagram. 22-18 15-22 26-17 draw, EDAJ, but continue 11-15 (others win) 32-27 7-11 27-23 19-26 30-23 11-16 BW.

F – 31-27 7-11 or 9-14 BW.

G – See the second diagram. 6-9 13-6 2-9 BW, EDAJ, continue 28-24 9-13 BW.

H – 9-13 10-6 18-23 6-1 23-26 1-6 26-31 25-22 31-27 24-20 15-19 6-10* 27-23 10-14* Black strong.

I – See the third diagram. 28-24! 9-14 6-9 14-18 9-6 18-22 21-17* draw.

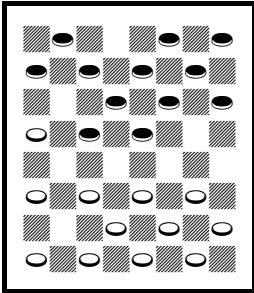
104. A. C. Rose – Graham Young, 2013 English Open, final round

10-15 22-17 6-10 17-13(A) 9-14(B) 25-22 2-6?(C) {diagram} 29-25?(D)
 15-18?(E) 22-15 11-18 24-19 8-11 26-22 4-8 22-15 11-18 28-24 8-11 24-20
 11-15 32-28 15-24 28-19 10-15(F) 19-10 6-15 30-26 {diagram} 15-19(G)
 23-16 12-19 20-16 1-6 16-12 19-23 26-19 5-9 27-24 18-22 25-18 14-23
 WW

A – 17-14 draw Published Play.

B – 1-6 draw Published Play.

C – 11-16 draw, Checkers 3.0 – R. King, 1992 US National from 10-15
 21-17 6-10.



144. White wins

D – See the first
 diagram. 23-19!

WW, KingsRow,
 continue 14-18

29-25 11-16 21-17!

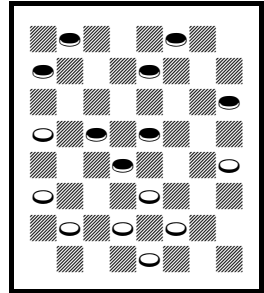
16-23 26-19 8-11
 31-26 11-16 26-23
 WW.

E – 15-19* draw.

F – 3-8 30-26 5-9
 19-16 WW.

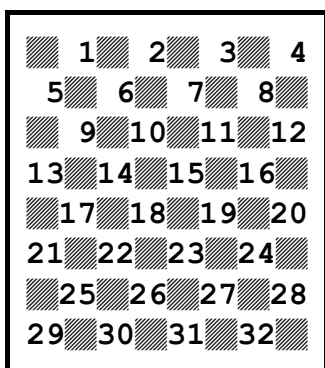
G – See the second

diagram. 3-8 draw, EDAJ, but continue 13-9* 8-11 26-22 12-16 31-26
 WW.

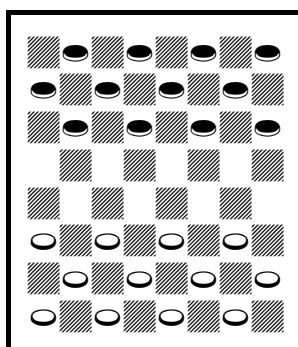


145. Black moves

Appendix – Checkers Notation (read and write moves)



Numbered Board



Starting Position

Numbered Board: Feel free to make a copy of this page, and keep it handy for reading checkers moves. The two players are called Black and White (sometimes called Red and White). Notice that Black’s pieces begin the game on 1 through 12, and White’s begin on 21 through 32. The game is played on the dark squares, but books and magazines normally reverse the colors of the squares of diagrams to improve readability. In this book and many others, Black is at the top of the diagram. Moves are recorded as from-to, an example being 11-15. A multiple jump is normally written the same way, like 10-26, unless that is ambiguous, then more information, like 10-19-26, is written. More info: I use “!” for a good move and “?” for a bad move, as they are used in chess. Some authors use “!” for a surprise move, whether it is good or bad. The handy asterisk or “star” “*” means “the only move,” usually the only move to draw, but sometimes the only move to win. In the past, a few authors used “*” for other purposes. Published play, means that the author doesn’t want to mention the players or author who first played those moves.

3-Move Opening Index

These numbers are the game numbers, not the page numbers.

9-13 22-18 11-16	100,101
9-13 22-18 12-16	39,40
9-13 23-18 11-16	87,88
9-13 23-19 10-14	21,22,28
9-13 23-19 11-16	85,86
9-13 24-19 5-9	76,77
9-13 24-19 6-9	74,75
9-13 24-20 10-14	69
9-13 24-20 10-15	41,42
9-13 24-20 11-16	12,13,67,68,93,94
9-14 22-17 6-9	47,48,56,57,58,59
9-14 22-18 10-15	8,9
9-14 23-18 14-23	89,90
9-14 24-19 11-15	54,55
9-14 24-20 5-9	49
10-14 22-17 14-18	4,5
10-14 23-19 7-10	3
10-14 23-19 11-16	10,11,31,32,80,95
10-14 24-19 14-18	50,51
10-15 21-17 11-16	45,46
10-15 21-17 15-18	43,44
10-15 22-17 6-10	103,104
10-15 22-17 7-10	37,38
10-15 22-17 9-13	78,79
10-15 23-18 6-10	96,97
10-15 23-19 6-10	65,66
10-15 23-19 11-16	91,92
10-15 24-19 15-24	24,25
11-15 21-17 8-11	17
11-15 22-17 10-14	35,36
11-15 23-18 15-19	18,72,73
11-15 23-19 8-11	1,2
11-15 24-19 15-24	14,15,83,84

11-15 24-20 12-16	19,20,102
11-15 24-20 15-18	64
11-16 21-17 9-13	70,71
11-16 22-18 7-11	6,7
11-16 22-18 16-19	33,34,60,61
11-16 22-18 16-20	81,82
11-16 23-18 8-11	62,63
11-16 23-18 16-20	16
11-16 24-19 8-11	52,53
12-16 21-17 16-19	26,27
12-16 22-17 16-20	98,99
12-16 24-19 16-20	29,30
12-16 24-20 8-12	23