

KEY LANDINGS



by

Richard Pask

Abbreviations Used In This Work

CR:	Colours Reversed
FD:	Forms Diagram
TR:	Transposition
ABC:	America's Best Checkers
ACFB:	American Checker Federation Bulletin
BC(7):	Basic Checkers (Volume 7)
CATE:	Checkers and the Experts
CC:	Championship Checkers
CTTW:	Checkers the Tinsley Way
EDJ:	English Draughts Journal
ID& C:	International Draughts & Checkers
(2ND)INT:	2nd International Match Book
KE:	Kear's Encyclopaedia
LPC:	Let's Play Checkers
(WC)MB:	(World Championship) match Book
MC:	Master Checkers (1963 WCM)
MEC:	Modern Encyclopaedia of Checkers
MP:	Master Play
MWC:	Midwest Checkers
SCME:	Scientific Checkers Made Easy
SW:	The Square World
TC:	Tournament Checkers
TNC:	Top Notch Checkers
WCC:	World Championship Checkers
WCC2:	World Class Checkers
WTC:	World Title Checkers

Published by Checkered Thinking.

©Richard Pask 1990

ISBN 1 872796 00 1

"Key Landings" is volume 3 of a 10-volume series, called "Total Checkers."

Electronic Edition produced by Bob Newell with permission of the author. Please send corrections and comments via email to bobnewell@bobnewell.net.

1st Electronic Edition published December 2005.

Key Landings by Richard Pask

Introduction

The midgame in Checkers is a vast field, and this, my first major work, has been written to assist the ambitious 3-move student in organizing the available information in a methodical way.

The 25 landings have been chosen for their practicality and importance, covering as they do, about 90 of the 3-move openings.

Generally speaking the more common transpositions have been given at the beginning of the list, leaving the more unusual examples until last. Any transpositions requiring weak moves by *both* sides have been *excluded*, but those containing an inferior move by *one side* have been *included*. E.g.: **10-14 22-18 12-16** 24-19 (inferior to 24-20) 8-12 26-22 7-10 22-17 16-20 and Black has been *forced* into #9.

The continuations from the diagram have been chosen to illustrate tried and tested defensive lines against all the major attacks. No attempt has been made to determine original authorship, but rather to find examples of the line in question being played by *players of note*. This is of more relevance to the practical player.

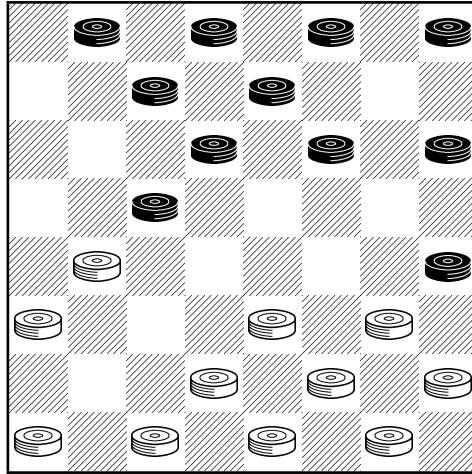
Finally I would like to thank Derek Oldbury for providing the inspiration for this work with his "Square World" article, and for providing much useful advice.

Sincerely,

Richard Pask

(2/7/89)

KEY MIDGAME LANDING NUMBER 1



NOTES: This *Master Pioneer* landing arises logically from 6 3-move openings, and can also lead into Key Landings #2 and #3.

TR NO 1: 9-14 22-17 11-16 25-22 8-11 22-18 16-20 18-9 5-14 FD

TR NO 2: 11-16 21-17 9-14 25-21 8-11 22-18 16-20 18-9 5-14 FD

TR NO 3: 11-16 22-17 16-20 25-22 8-11 22-18 9-14 18-9 5-14 FD

TR NO 4: 11-16 22-18 8-11 25-22 16-20 22-17 9-14 18-9 5-14 FD

TR NO 5: 11-16 22-18 16-20 25-22 8-11 22-17 9-14 18-9 5-14 FD

TR NO 6: 12-16 22-18 16-20 25-22 8-12 22-17 9-14 18-9 5-14 FD

CONTINUATION FROM DIAGRAM

29-25(7) 11-15 (4-8? is Dunne's Loss) 25-22(5) 7-11 17-13(4) 4-8 24-19(2) (30-25 into #2) 15-24 28-19 11-15 32-28(1) 15-24 28-19 8-11 19-16 12-19 23-7 2-11 26-23 11-15 30-26 3-8 22-18 15-22 26-17 8-11 23-19 11-15 19-16 15-19 16-11 14-18 27-23 18-27 31-15 10-19 etc **DRAWN.**

W. HELLMAN V A. LONG. WCC P93

VARIATION 1

19-16 12-19 23-16 15-18 22-15 10-19 32-28 2-7 16-12 7-11 27-23 11-16 26-22 19-26 30-23 6-10 13-9 10-15 22-17 15-18. **DRAWN. N. RUBIN V E. HUNT. CC P75**

VARIATION 2

22-17 15-18 30-25(3) 11-16 24-19 2-7 26-22 7-11 22-15 11-18 31-26 (27-24 is met with 16-20) 8-11 19-15 10-19 17-10 6-15 23-14 15-18 26-22 3-8 22-15 11-18 14-10 19-24 28-19 16-23.
DRAWN. M. TINSLEY V A. LONG. WTC P9

VARIATION 3

24-19 18-22 19-16 12-19 23-7 2-11 26-23 22-25 23-18 14-23 27-18 3-7 17-14 10-17 21-14 25-29 14-9 6-10 9-6 10-15 6-2 15-22 28-24 20-27 32-23 22-25 30-21 29-25 23-19 8-12 19-15.
DRAWN. A. LONG V N. BANKS. CC P77

VARIATION 4

24-19 15-24 28-19 11-15 19-16 (32-28 15-24 28-19 4-8 17-13 is into trunk) 12-19 23-16 2-7 17-13 4-8 (the shot must be permitted, since 15-18 22-15 10-19 goes out by 27-23*!, and not the return to Variation 1 by 32-28) 21-17 14-21 30-25 21-30 16-12 30-23 27-2 1-5 2-9 5-14 13-9 10-15 9-6 14-18 22-17 8-11 6-2 15-19 17-14 19-23 14-10 11-15(18-22 loses) 10-3 3-10 2-7 10-14 7-10 15-19 10-17 18-22. **DRAWN. ANALYSIS BY J. ALEXANDER. CC P74**

This cook can also arise from **12-16 21-17 16-20**, **11-16 21-17 16-20** & **11-16 21-17 8-11** as follows: 12-16 21-17 16-20 17-13 8-12 22-18 10-15 25-22 7-10 29-25 9-14 18-9 5-14 24-19 15-24 28-19 11-15 19-16 12-19 23-16 2-7 25-21 SAME. **This should be carefully noted.**

VARIATION 5

26-22 15-18 22-15 10-26 17-10 7-14 30-23 4-8 24-19 8-11 31-26 2-7 25-22 6-10 19-16 12-19 23-16 11-15 27-24(6) 20-27 32-23 1-5 23-19 15-24 28-19 5-9 22-17 10-15 17-10 15-24 10-6 24-27 26-22 9-14 6-2 14-18 22-15 7-11. **DRAWN. S. GONOTSKY V L. GINSBERG. CC P82**

VARIATION 6

22-17 15-18 17-13 14-17 21-14 10-17 27-24 20-27 32-14 17-21 14-9 21-25 26-23 25-30 28-24
30-26 24-19 26-22 16-11 7-16 19-12 22-17 23-19 17-22 19-15 22-18 15-11 18-14 9-5 14-18 11-8
18-15 8-4 15-11. **DRAWN. A. JORDAN V L. GINSBERG. CC P82**

VARIATION 7

24-19 11-15 19-16(11) 12-19 23-16 4-8 29-25 6-9 17-13 2-6 26-23 8-11 25-22(8) 1-5 22-17 14-18
23-14 9-18 27-24 20-27 32-14 11-20 31-26 20-24 28-19 15-24 26-22 24-27 22-18 27-31 18-15.
DRAWN. W. RYAN V W. HELLMAN. WCC P42

VARIATION 8

23-19(9) 15-24 28-19 1-5 30-26 (IF 32-28 THEN 14-17 21-14 9-18 31-26 18-23 DRS) 11-15
32-28 15-24 28-19 14-17 21-14 10-17 25-21 9-14 16-12 7-11 19-16 11-15 16-11 15-18 27-24
20-27 31-24 18-22 26-23 22-26 11-7. **DRAWN. W. HELLMAN V W. RYAN. WCC
P80**

VARIATION 9

31-26(10) 1-5 28-24 14-17 21-14 9-18 23-14 10-17 16-12 11-16 26-22 17-26 30-23 16-19 23-16
5-9 25-22 7-10 16-11 10-14 11-7 3-10 12-8 15-18 22-15 10-28 27-23. **DRAWN. ANALYSIS
BY J. ALEXANDER. CC P90**

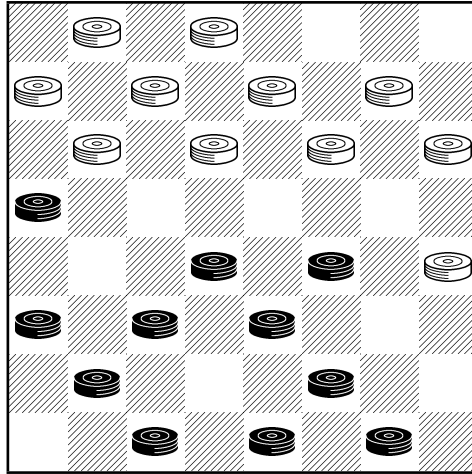
VARIATION 10

Both 16-12 1-5 31-26 14-17 etc 28-24 and 28-24 1-5 16-12 14-17 etc 31-26 go into Var 9

VARIATION 11

29-25 15-24 28-19 4-8 25-22 8-11 19-16 (17-13 into #3) 12-19 23-16 11-15 26-23 (if 16-12
then 6-9) 15-18 22-15 10-26 30-23 6-10 23-19 10-15 19-10 2-6 16-11 7-16 6-15 17-10 20-24.
DRAWN. R. JORDAN V H. FREEDMAN. CC P83

KEY MIDGAME LANDING NUMBER 2



NOTES: This may arise from at least 9 3-move openings, in addition to the 6 given on page 4. Numerous White wins have been scored from the diagrammed position in the past.

TR NO 1: 10-15 21-17 11-16 17-13 16-20 23-18 8-11 26-23 7-10 25-21 9-14 18-9 5-14 29-25 4-8 30-26 FD

TR NO 2: 11-16 21-17 8-11 17-13 16-20 22-18 10-15 26-22 NO 1 @ 8TH

TR NO 3: 11-16 21-17 16-20 17-13 10-15 NO 1 @ 5TH

TR NO 4: 11-16 22-17 8-11 25-22 11-15 17-13 16-20 23-18 7-11 NO 1 @ 9TH
TR NO 5: 11-16 23-18 8-11 26-23 16-20 22-17 9-14 18-9 5-14 25-22 11-15 29-25 7-11 (15-18 best: P5 V5) 17-13 4-8 30-26 FD

TR NO 6: 11-16 23-18 9-14 18-9 5-14 22-17 16-20 25-22 8-11 26-23 NO 5 @10TH

TR NO 7: 11-16 23-18 16-20 26-23 8-11 NO 5 @ 5TH

TR NO 8: 12-16 21-17 16-20 17-13 8-12 No 2 @ 5TH

TR NO 9: 12-16 23-18 16-20 26-23 8-12 No 5 @ 5TH

CONTINUATION FROM DIAGRAM

11-16(5) 24-19 15-24 28-19 3-7 (8-11 is weak by 22-18) 22-18 1-5(4) 18-9 5-14 19-15(3) 10-19 25-22 8-11 13-9(1) 6-13 22-17 13-22 26-3 19-26 31-22 11-15 3-8 15-19 8-11 19-24 27-23 24-27 23-18 27-31 18-14 16-19. **DRAWN. M. CHAMBLEE V W. HELLMAN. ABC P149**

VARIATION 1

22-18(2) 6-9 13-6 2-9 32-28 9-13 18-9 11-15 23-18 15-22 26-17 13-22 27-24 20-27 31-15 22-26 9-5 26-31 5-1 31-26 1-5 26-22. **DRAWN. J. MORRISON V L. EDWARDS. 4TH INT P154**

VARIATION 2

32-28 19-24 28-19 6-10 22-18 11-15 18-9 15-24 9-6 2-9 13-6 10-15 6-2 7-11 2-7 24-28 7-10 15-18 23-14 11-15 10-19 16-32. **DRAWN. ANALYSIS BY A. HEFFNER. 2ND INT P365**

VARIATION 3

26-22 14-17 21-14 10-26 31-22 7-10 22-18 8-11 18-15 11-18 23-7 16-23 27-18 2-11 18-14 20-24 25-22 12-16 22-17 16-20 14-9 6-10 9-6 10-15 6-2 15-19 2-7 11-16 32-28 24-27 7-11 19-23 11-15 23-26 15-18 27-32. **DRAWN. ANALYSIS BY F. TESCHELEIT. MP P238**

VARIATION 4

14-17 21-14 10-17 25-21 6-10 21-14 10-17 18-14 8-11 (17-21 WEAK) 26-22 17-26 31-22 2-6 22-18 6-10 14-9 10-14 19-15 1-5 15-8 16-19 23-16 14-23 27-18 5-23. **DRAWN. ANALYSIS BY M. TINSLEY. 4TH INT P75**

VARIATION 5

15-18 (untested and not recommended; also 3-7? loses by 22-17 11-16 23-19 etc and 2-7? loses by 24-19 15-24 28-19 14-17 21-14 10-17 25-21 6-10 21-14 10-17 13-9 17-21 23-18 etc) 22-15 11-18 24-19 3-7 19-16 12-19 23-16 8-12 13-9 12-19 26-22 6-13 22-6 1-10? (2-9 may draw) 27-24 20-27 31-6 2-9 25-22 7-11 32-27 11-16 27-23 16-20 22-18. **WHITE WIN. J. MORGAN V R. PASK**

VARIATION 1

22-17(2) 7-11 26-22 11-15 23-18 14-23 27-11 16-23 31-27 (11-8 loses by 10-15) 3-7 27-18 7-16 30-26 20-24 17-14 10-17 21-14 6-10 14-7 2-11. **DRAWN. J. WYLLIE V C. BARKER. CC P61**

VARIATION 2

22-18 14-17 (best) 21-14 10-17 18-14 (26-22 is weak by 7-10) 1-5 23-18 16-23 26-19 17-22 27-23 7-10 14-7 3-10 18-15 2-7 32-27 5-9 23-18 10-14 27-23 14-17 31-27 22-26 18-14 9-18 23-14 26-31 14-9 31-24 9-2 7-11. **DRAWN. ANALYSIS BY P. KETCHUM. CC P56**

VARIATION 3

11-15 32-28(4) 15-24 28-19 10-15 19-10 6-15 22-18 15-22 26-10 7-14 30-26 12-16 26-22 3-8 22-18 1-5 18-9 5-14 13-9 8-12 9-5 16-19 23-16 12-19 27-23 19-26 31-22 2-7. **DRAWN. D. OLDBURY V J. MARSHALL. 1950 SCOTTISH P54**

VARIATION 4

19-16 12-19 23-16 15-19 22-17(6) 10-15 17-10 7-14 16-11 19-24 26-23(5) 24-28 31-26 (or 30-25 1-5 31-26 15-18 same) 1-5 (not 15-18 21-17! 14-21 23-14 1-5 13-9! 6-13 26-22 W best) 30-25 15-18 26-22 20-24 27-20 18-27 32-23 14-17 21-14 6-9 13-6 2-27 22-18 27-31 18-14. **DRAWN. A. LONG V E. HUNT. MB P43**

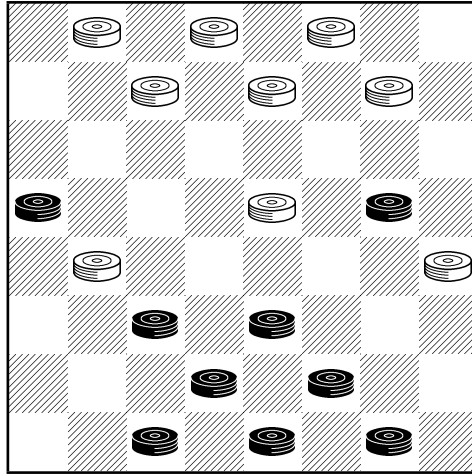
VARIATION 5

26-22 1-5 30-25 24-28 22-17 (31-26 14-18 11-7 2-11 21-17 20-24! 27-20 11-16! 20-11 3-7! 11-2 15-19! 22-15 19-24!!! DRN: H. CRAVENS V D. OLDBURY) 14-18 27-24 20-27 32-14 6-9 13-6 2-18. **DRAWN. W. HELLMAN V J. MCGILL. 3RD INT P68**

VARIATION 6

22-18 14-23 27-18 19-24 21-17 (OR 26-22 & 6-9 DRS) 10-14 18-9 1-5 17-14 7-11 16-7 3-17 32-28 5-14 28-19 20-24 19-15 14-18. **DRAWN. C. McCARRICK V H. BURTON. 4TH INT P14**

KEY MIDGAME LANDING NUMBER 4



NOTES: This is a tough assignment for Black which he can, and should, avoid. It is popularly known as the 'Harry' position.

TR NO 1: 11-16 21-17 8-11 17-13 16-20 22-18 9-14 (10-15 best) 18-9 5-14 25-22 (26-22 also strong) 11-15 24-19 15-24 28-19 4-8 22-18 14-17 29-25 8-11 19-16 12-19 23-16 FD

TR NO 2: 11-16 21-17 16-20 17-13 8-11 NO 1 @ 5TH

TR NO 3: 12-16 21-17 16-20 17-13 8-12 NO 1 @ 5TH

TR NO 4: 12-16 21-17 9-14 17-13 16-20 (16-19 BEST) 22-18 8-12 18-9 5-14 NO 1 @ 9TH

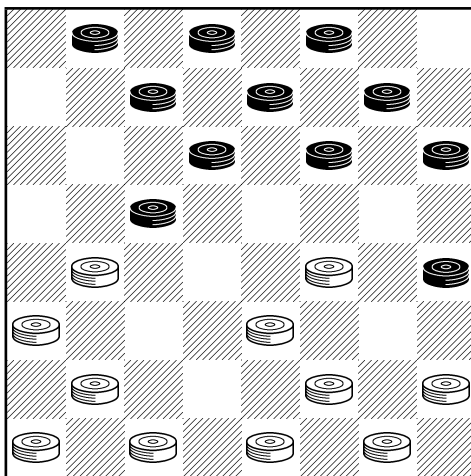
CONTINUATION FROM DIAGRAM

17-21 (1-5 is weak after 16-12: M. TINSLEY V L. SANDERS) 25-22 6-9(1) 13-6 2-9 26-23 9-13 (1-5 loses by 32-28 9-13 31-26 5-9 28-24 10-14 24-19 14-17 16-12 7-10 12-8) 23-19 10-15 19-10 7-23 16-7 3-10 27-18 1-5 31-27 5-9 27-24 20-27 32-23 etc **DRAWN. J. HANSON V L. GINSBERG. BC(7) P26**

VARIATION 1

10-15 (a common loser; 1-5 also fails after 22-17 10-15 18-14 6-9 13-6 2-18 17-14) 18-14 15-19 22-18 1-5 (for 6-10 see S. Cohen v D. Oldbury MB) 32-28 19-24 28-19 6-10 13-9 10-17 18-14 etc **WHITE WIN. A. HUGGINS V D. OLDBURY. EDJ 1. 1 P9**

KEY MIDGAME LANDING NUMBER 5



NOTES: This evenly balanced position commonly arises from 6 of the 3-move openings, and allows little scope for complications.

TR NO 1: 11-16 24-19 8-11 22-18 4-8 26-22 16-20 22-17 9-14 18-9 5-14 FD

TR NO 2: 12-16 2A-19 16-20 22-18 8-12 26-22 4-8 NO 1 @ 7TH

TR NO 3: 12-16 22-18 16-20 24-19 NO 2 @ 4TH

TR NO 4: 11-16 22-18 8-11 24-19 NO 1 @ 4TH

TR NO 5: 11-16 23-18 8-11 26-23 16-20 24-19 4-8 NO 1 @ 7TH

TR NO 6: 12-16 23-18 16-20 26-23 8-12 NO 5 @ 5TH

CONTINUATION FROM DIAGRAM

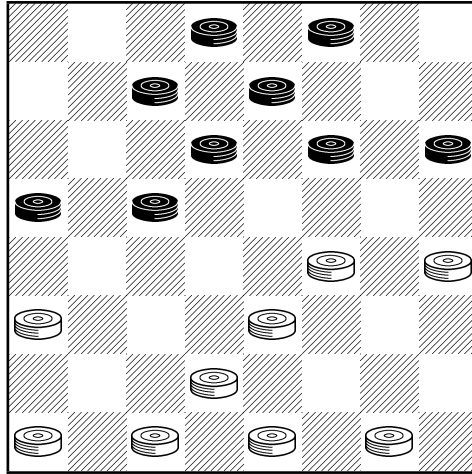
25-22 11-15 30-26 15-24 28-19 8-11 22-18 11-16(1) 18-9 6-22 26-17 2-6 17-14 10-17 21-14 1-5 29-25 6-10 25-21 10-17 21-14 7-10 14-7 3-10 31-26 5-9 26-22 10-14 22-18 14-17 18-14 9-18 23-14 16-23 27-18. **DRAWN. E. HUNT V A. LONG. MB P77**

VARIATION 1

11-15 18-11 7-16 26-22 3-8 17-13 8-11 22-18 1-5 18-9 5-14 29-25 2-7 25-22 14-17 21-14 10-26 31-22 6-10 22-18 10-14 18-9 7-10 32-28 10-14 9-6 14-18 23-14 16-32. **DRAWN. T. WATSON V R. PASK. 1985 SCOTTISH**

12-16 32-27 (18-15 also draws) 1-6 18-14 16-19 27-23 19-26 30-23 2-7 21-17 11-15 17-13 15-19
23-16 7-11 16-7 3-17. **DRAWN. D. OLDBURY V J. MARSHALL. MB P8**

KEY MIDGAME LANDING NUMBER 7



NOTES: This landing favours White slightly, and can arise from many 3-move openings, in addition to those given on page 13. I give just 8 examples.

TR NO 1: 9-13 23-19 5-9 22-18 11-15 18-11 8-15 25-22 9-14 27-23 4-8 24-20 15-24 28-19
8-11 22-18 1-5 18-9 5-14 FD

TR NO 2: 9-13 23-19 6-9 27-23 9-14 22-18 11-15 18-11 8-15 24-20 15-24 28-19 4-8 25-22
8-11 22-18 1-6 18-9 5-14 FD

TR NO 3: 9-13 23-19 10-14 27-23 6-10 NO 2 @ 5TH

TR NO 4: 9-13 24-19 6-9 27-24 NO 2 @ 4TH

TR NO 5: 9-13 24-19 10-14 27-24 6-10 NO 2 @ 5TH

TR NO 6: 10-14 23-19 6-10 27-23 9-13 NO 2 @ 5TH

TR NO 7: 10-14 24-19 6-10 27-24 9-13 NO 2 @ 5TH

TR NO 8: 10-14 24-20 6-10 22-18 11-15 18-11 8-15 23-19 15-24 28-19 4-8 25-22 8-11
27-23 9-13 NO 2 @ 15TH

CONTINUATION FROM-DIAGRAM

29-25 11-15 32-28(3) 15-24 28-19 7-11 19-16 12-19 23-7 2-11 25-22 3-8 22-17(2) 13-22 26-17
8-12 30-26(1) 14-18 17-14 10-17 21-14 11-15 26-23 18-27 31-24. **DRAWN. T. WATSON**
V A. LONG. 4TH INT P175

VARIATION 1

31-26 14-18 17-14 10-17 21-14 12-16 30-25 16-19 26-22 18-23 22-17 23-26 17-13 19-24 25-21
26-30 14-9 6-10 9-6 10-15 6-2 15-19 2-7 11-15 7-11 15-18. **DRAWN. A. LONG V T.
WATSON. 4TH INT P175**

VARIATION 2

26-23 8-12 30-26 6-9 20-16 11-20 23-19 20-24 26-23 24-28 22-18 28-32 18-15 32-27 31-24 12-16
15-6 16-20. **DRAWN. ANALYSIS BY J. DRUMMOND. TC P36**

VARIATION 3

19-16 12-19 23-16 14-18 32-27 7-11 16-7 2-11 26-22 3-8 21-17(4) 15-19 22-15 13-29 31-26
11-18 26-23 19-26 30-7. **DRAWN. L. LEVITT V G. DAVIES. 3RD INT P54**

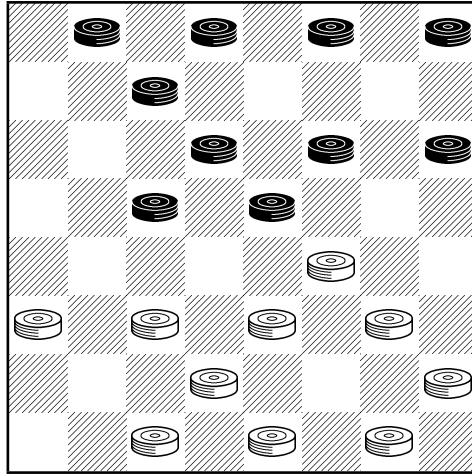
VARIATION 4

31-26 10-14 26-23 8-12 21-17 14-21 23-14 15-19 22-18 19-23 27-24 23-26 30-23 21-30 23-19
30-26 19-15. **DRAWN. ANALYSIS BY A. ANDERSON. TC P30**

Additional Note: An important “Defiance” variation.

10-14 22-18 11-15 18-11 8-15 24-19 15-24 28-19 6-10 25-22 4-8 27-24 8-11 24-20 9-13 31-27!
(instead of the usual 22-18) 11-16 20-11 7-16 22-18 3-7 18-9 5-14 23-18 14-23 27-18 16-23
26-19 13-17 21-14 10-17 29-25 17-22 25-21 7-11 19-15 11-16 15-11 16-19 11-8 12-16 8-3 22-26.
DRAWN. ANALYSIS BY A. HEFFNER. 2ND INT P409

KEY MIDGAME LANDING NUMBER 8



NOTES: This evenly balanced landing can arise from numerous 3-move openings, in addition to the 5 given on page 13. I give just 8 examples.

TR NO 1: 9-13 23-19 10-14 22-17 13-22 25-9 5-14 27-23 7-10 29-25 11-15 25-22 8-11 FD

TR NO 2: 10-14 22-17 7-10 24-19 9-13 27-24 13-22 25-9 5-14 NO 1 @ 9TH

TR NO 3: 10-14 24-20 11-16 20-11 8-15 22-18 15-22 25-18 4-8 28-24 8-11 24-19 6-10 26-22 FD CR

TR NO 4: 10-15 23-19 7-10 27-23 9-14 22-18 15-22 25-9 5-14 NO 1 @ 9TH

TR NO 5: 11-15 23-19 9-13 22-17 13-22 25-11 8-15 29-25 5-9 25-22 9-14 27-23 7-11 FD

TR NO 6: 9-13 24-19 10-14 22-17 13-22 25-9 5-14 27-24 7-10 NO 1 @ 9TH

TR NO 7: 10-14 23-19 7-10 22-17 9-13 27-23 13-22 25-9 5-14 NO 1 @ 9TH

TR NO 8: 10-14 24-19 7-10 22-17 9-13 27-24 13-22 25-9 5-14 NO 1 @ 9TH

CONTINUATION FROM DIAGRAM

22-18(1) 15-22 26-17 11-15 24-20 15-24 28-19 4-8 30-26 8-11 19-16 12-19 23-7 2-11 26-23 6-9 17-13 3-7 13-6 14-18 23-14 10-17 21-14 1-17 31-27 17-22 27-24. **DRAWN. A. LONG V W. HELLMAN. WCC P110**

VARIATION 1

24-20 15-24 28-19 11-15 32-28 15-24 28-19 6-9 22-18 4-8 31-27(2) 8-11 18-15 11-18 21-17 14-21 23-5 2-6 20-16 10-15 19-10 12-19 27-23 6-15 23-16 15-19 16-11 19-24 26-23 24-27 23-19. **DRAWN. R. STEWART V N. BANKS. MB P69**

VARIATION 2

20-16(3) 3-7 26-22 9-13 18-9 8-11 30-26 11-20 22-18 20-24 21-17 13-22 26-17 7-11 17-13 10-14 9-6 1-10 18-9 11-15 9-6 2-9 13-6 24-28 6-2 15-24 23-18. **DRAWN. ANALYSIS BY H. SMITH. TC P73**

VARIATION 3

18-15 (loses) 1-6 26-22 9-13 22-18(4) 3-7 18-9 13-17 21-14 6-13 15-6 2-27 31-24 8-11 30-26 7-10. **BLACK WIN. R. PASK V D. RETALLICK. 1989 ENGLISH**

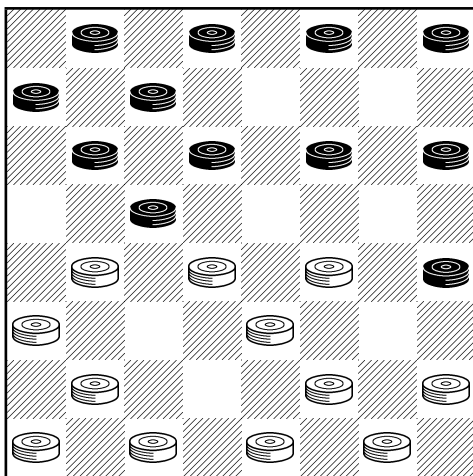
VARIATION 4

30-25 14-17 21-7 2-27 31-24 6-10 22-18 8-11 25-21 13-17 21-7 3-10. **BLACK WIN. ANALYSIS BY J. DRUMMOND. TC P76**

ADDITIONAL NOTE: “THE 5-9 DEFIANCE” This commonly arises from **9-14 23-19 5-9, 9-14 24-19 11-15** and **11-15 23-19 9-14**. A key game follows:

9-14 23-19 5-9 27-23 11-15 22-18 15-22 25-18 7-11 26-22 11-15 18-11 8-15 24-20 15-24 28-19 4-8 22-18 8-11 30-26 2-7 32-28 10-15 19-10 6-22 26-10 7-14 29-25 9-13 23-19 3-7 31-27 7-10 27-23 1-5 25-22 11-15 28-24 5-9 20-16 14-17 21-7 9-14. **DRAWN. M. TINSLEY V D. OLDBURY. ID & C P53**

KEY MIDGAME LANDING NUMBER 9



NOTES: This classic landing can arise from 13 3-move openings, notably the Bristol-Cross. White has a large number of attacks at his command, but solid defences have been established to meet all of them.

TR NO 1: 11-16 22-18 8-11 24-19 16-20 26-22 10-14 22-17 7-10 FD

TR NO 2: 11-16 22-18 16-20 24-19 8-10-14 22-17 7-10 FD

TR NO 3: 11-16 23-18 8-11 26-23 16-10-14 22-17 7-10 FD

TR NO 4: 11-16 23-18 16-20 24-19 10-14 26-23 8-11 22-17 7-10 FD

TR NO 5: 11-16 24-19 8-11 22-18 10-14 26-22 7-10 22-17 (refusing to be bluffed!) 16-20 FD

TR NO 6: 11-16 24-19 16-20 23-18 10-14 26-23 8-11 22-17 7-10 FD

TR NO 7: 12-16 22-18 16-20 24-19 8-12 26-22 10-14 22-17 7-10 FD

TR NO 8: 12-16 23-18 16-20 24-19 10-14 26-23 8-12 22-17 7-10 FD

TR NO 9: 12-16 24-19 16-20 22-18 8-12 26-22 10-14 22-17 7-10 FD

TR NO 10: 10-14 22-18 11-16 26-22 7-10 24-19 8-11 22-17 16-20 FD

TR NO 11: 10-14 24-19 7-10 22-18 11-16 26-22 16-20 22-17 8-11 FD

TR NO 12: 10-14 24-19 11-16 22-18 8-11 26-22 16-20 22-17 7-10 FD

TR NO 13: 11-16 23-18 10-14 26-23 7-10 24-19 8-11 22-17 16-20 FD

CONTINUATION FROM DIAGRAM

30-26(8) 11-16 26-22(6) 9-13 18-9 5-14 22-18 13-22 18-9 6-13 25-18 4-8 (IF 2-6 THEN 18-15 W BEST) 29-25 8-11 18-15(5) 11-18 23-7 3-10 25-22(4) 16-23 27-18 1-5 32-27(3) 2-7 18-15(2) 10-19 27-24 20-27 31-15 5-9 28-24(1) 12-16. **DRAWN. M. TINSLEY V P. MCCARTHY. 4TH INT P40**

VARIATION 1

22-18 12-16 15-11 7-10 11-7 10-14 18-15 14-18 7-2 16-19 2-7 9-14 15-10 18-22. **DRAWN. R. HALLETT V D. OLDBURY. MWC P527**

VARIATION 2

27-23 7-11 31-27 5-9 21-17 11-15 18-11 9-14 11-7 14-21 23-18 12-16 7-2 16-19 2-7 19-23 7-14 23-32 18-15 32-27 15-10 21-25 22-18 27-23 10-6. **DRAWN. S. GONOTSKY V L. GINSBERG. MB P36**

VARIATION 3

31-26 5-9 26-23 2-7 32-27 7-11 28-24 10-14 24-19 11-16 18-15 14-18 23-5 16-32 22-18 32-27 18-14. **DRAWN. A. JORDAN V R. WARD. KE P110**

VARIATION 4

27-23 2-6 25-22 6-9 22-18 1-5 18-15 10-14 15-11 14-18 23-14 16-23 14-10 23-27 32-23 13-17 21-14 9-27 31-24 20-27. **DRAWN. S. GONOTSKY V M. LIEBER. MB P34**

VARIATION 5

18-14 (if 28-24 then 2-6 is easy) 10-17 21-14 13-17 25-22 17-26 31-22 1-6 22-18 6-10 14-7 3-10 28-24 2-7 32-28 10-14 18-9 7-10 9-6 10-14 19-15 11-18 6-2 18-22 2-6 22-26 6-9 14-17 23-19 16-32 9-13 20-27 13-24. **DRAWN. M. LIEBER V S. GONOTSKY. MB P35**

VARIATION 6

28-24(7) 9-13 18-9 13-22 25-18 5-14 18-9 6-13 32-28 4-8 (simplest) 19-15 10-19 24-15 16-19 23-16 12-19 29-25 3-7 25-22 1-6 22-18 7-11 27-23 11-16 21-17 (if 31-27 then 6-10!) 13-22 26-17 19-26 31-22 8-12 17-14 20-24. **DRAWN. M. TINSLEY V M. CHAMBLEE. GATE P30**

VARIATION 7

17-13 3-7 26-22 14-17 21-14 10-26 31-22 7-10 25-21 10-14 29-25 2-7 28-24 4-8 32-28 7-10 18-15 14-18 23-7 16-32 22-18 20-27 25-22 9-14 18-2 5-9 13-6 1-19 2-6 8-11 7-3 11-16. **DRAWN. A. LONG V W. HELLMAN. WCC P94**

VARIATION 8

28-24(9) 4-8 30-26 9-13 18-9 13-22 25-18 5-14 18-9 6-13 32-28 11-16 into VARIATION 6

VARIATION 9

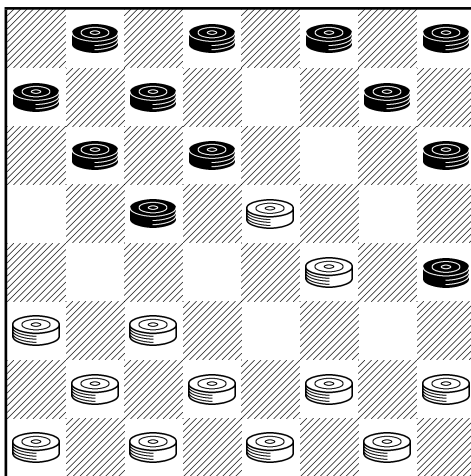
17-13 3-7 31-26 12-16 19-12 4-8 12-3 14-17 21-14 10-17 3-10 6-31 13-6 31-24 28-19 1-10 23-18 10-14 18-9 5-14 32-27(10) 2-6 19-16 6-9 16-7 17-22 25-18 14-32 29-25 32-27 25-22. **DRAWN. R. PASK V P. MCCARTHY. 1984 HOME INTERNATIONALS.**

VARIATION 10

19-16 20-24 16-7 2-11 32-27 24-31 30-26 31-22 25-9. **DRAWN. (SINCE BLACK CANNOT OBTAIN FIRST POSITION) B. CASE V W. HELLMAN. ABC PI01**

General Comment: Although the main lines have received a thorough hammering over the years, they are still producing wins against opponents not well versed in the fine points.

KEY MIDGAME LANDING NUMBER 10



NOTES: This landing arises from 4 of the 3-move openings, and contains many tricky points which have netted countless White wins.

TR NO 1: 11-16 23-18 16-20 24-19 10-14 18-15 7-10 FD

TR NO 2: 11-16 24-19 16-20 23-18 10-14 18-15 7-10 FD

TR NO 3: 10-14 23-19 11-16 19-15 16-20 24-19 7-10 FD

TR NO 4: 11-16 23-18 10-14 18-15 16-20 24-19 7-10 FD

CONTINUATION FROM DIAGRAM

22-17 (if 27-23 then 9-13 is best) 9-13 27-23(6) 13-22 25-9 5-14 29-25 3-7 (1-5? loses by 32-27) 31-27(5) 1-5 (7-11? loses by 21-17) 25-22 20-24 27-20 7-11 22-17 11-27 32-23 6-9 19-15 (IF 17-13 then 10-15 is easy) 10-19 17-10 9-14 23-16 12-19 26-23 19-26 30-23 8-12 (8-11 leads to a weak ending) 28-24 4-8 23-19(4) 14-18(3) 19-15 18-23 21-17 23-27 17-13 27-31(2) 10-6 2-9 13-6 31-26 6-2(1) 5-9 24-19 (if 2-6 then 26-23 DRS) 26-22 15-10 22-18 10-6 9-13 6-1 13-17.
DRAWN. ANALYSIS BY D. LAFFERTY. BC(6) P57.

VARIATION 1

24-19 26-22 15-10 22-18 10-7 18-14 7-3 14-10 6-2 5-9 2-7 9-14 7-2 8-11 3-8 11-15 2-6 10-11 9-10.
DRAWN. W. HELLMAN V W. RYAN. BC(6) P58

VARIATION 2

27-32? 10-6 2-9 13-6 32-28 24-19 28-24 6-2 8-11 15-8 24-15 2-6 15-11 8-4. **WHITE WIN.**
ANALYSIS BY D. LAFFERTY. BC(6) P58

VARIATION 3

8-11? 10-7 11-15 19-10 2-11 10-7 12-16 7-3 5-9 3-8 16-19 8-15 19-28 20-16 28-32 16-11 32-28
11-7 9-13 7-2 13-17 15-10. **WHITE WIN. I. EDWARDS V R. FIELDS. 3RD INT**
P72

VARIATION 4

24-19 8-11 10-7 2-6 7-2 6-10 20-16 11-20 2-6 20-24 6-15 5-9 15-18 24-27 18-22 27-31 22-17
31-27. **DRAWN. ANALYSIS BY A. HEFFNER. 1962 WCMB P2**

VARIATION 5

32-27 7-11 (1-5? loses by 25-22) 26-22 11-18 22-15 8-11 15-8 4-11 25-22 11-16 30-26 14-18
22-15 10-14 26-22 14-18 23-14 16-32 14-10 32-27 31-24 20-27 22-18 27-31 10-7 2-11 15-8 31-26
18-15. **DRAWN. S. LEVY V S. COHEN. MB P28**

VARIATION 6

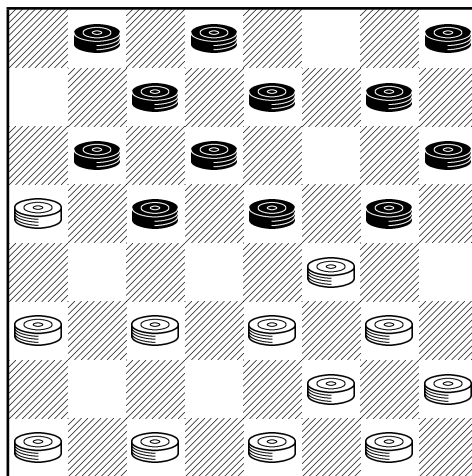
26-23(7) 13-22 25-9 5-14 29-25 12-16 19-12 10-26 30-23 8-11 25-22 2-7 22-17 4-8 17-10 7-14
31-26 11-15 26-22 8-11 28-24 6-10 23-18 14-23 27-18 20-27 32-23 1-5 21-17 3-7 12-8 15-19.
DRAWN. ANALYSIS BY M. CHAMBLEE. 1962 WCMB P2

VARIATION 7

28-24 (a cook by Elbert Lowder) 13-22 25-9 5-14 32-28 3-7 29-25 1-5 25-22 14-18 22-17 18-22
17-13 22-25 21-17 25-29 27-23 20-27 31-24 8-11 15-8 4-11 **BLACK BEST. ANALYSIS**
BY H. LIEBERMAN. ACFB 153 P160

NOTE: **9-13 23-19 11-16** 27-23 10-14 19-15 16-20 etc and **9-13 23-19 10-14** go into trunk.

KEY MIDGAME LANDING NUMBER 11



NOTES: This Whilter landing arises from at least 7 3-move openings, and favours Black.

TR NO 1: 11-15 23-19 9-14 22-17 7-11 25-22 11-16 26-23 5-9 17-13 3-7 FD

TR NO 2: 10-15 23-19 7-10 26-23 9-14 22-17 11-16 25-22 5-9 17-13 3-7 FD

TR NO 3: 9-14 23-19 11-16 26-23 5-9 22-17 7-11 17-13 11-15 25-22 3-7 FD

TR NO 4: 11-15 23-19 8-11 22-17 9-14 25-22 3-8 26-23 (or 29-25! 11-16! 27-23 7-11 31-27 5-9 17-13 16-20 DRS) 5-9 17-13 11-16 FD

TR NO 5: 11-15 22-17 8-11 23-19 NO 4 @ 4TH

TR NO 6: 9-14 22-17 11-15 25-22 8-11 23-19 NO 4 @ 6TH

TR NO 7: 11-15 21-17 9-14 25-21 NO 6 @ 4TH

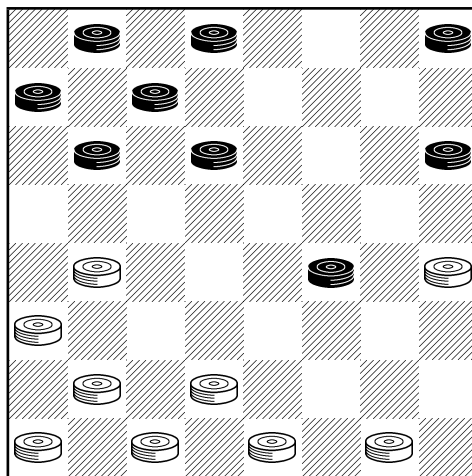
CONTINUATION FROM DIAGRAM

29-25 1-5(1) 22-17 8-11 31-26 4-8 25-22 16-20 23-18 14-23 27-18 20-27 32-23 15-24 28-19 11-16 17-14 10-17 21-14 16-20 19-15 7-11 23-19 20-24 14-10 24-27 10-1 9-14. **DRAWN. R. MARTINS V J. WYLLIE. SW P46**

VARIATION 1

7-11 24-20 15-24 28-19 11-15 20-11 15-24 27-20 8-15 31-27 15-18 22-15 10-26 30-23 1-5 23-18 14-23 27-18 9-14 18-9 5-14 25-22 4-8 32-27 8-11 27-23 11-15 22-17 6-10 13-9 **DRAWN. A. HEFFNER V C. BARKER. ACFB 135 P63**

KEY MIDGAME LANDING NUMBER 12



NOTES: This classic “Glasgow” landing arises from at least 6 3-move openings, and allows Black a wide variety of attacks. However, sound defences have been established to deal with all of them.

TR NO 1: 11-15 23-19 8-11 22-17 11-16 2A-20 16-23 27-11 7-16 20-11 3-7 28-24 7-16 24-20 16-19 FD

TR NO 2: 11-15 22-17 8-11 23-19 NO 1 @ 4TH

TR NO 3: 9-13 23-18 5-9 26-23 10-14 30-26 11-16 22-17 13-22 26-10 6-22 25-18 9-13 18-14 FD CR

TR NO 4: 10-14 24-20 11-16 20-11 8-15 23-18 14-23 27-11 7-16 22-17 3-7 28-24 7-10 24-20 16-19 FD

TR NO 5: 10-15 23-18 11-16 18-11 8-15 24-19 16-23 27-11 7-16 22-17 3-7 28-24 7-10 24-20 16-19 FD

TR NO 6: 11-15 24-20 12-16 20-11 7-16 22-17 8-12 23-19 16-23 27-11 3-7 28-24 7-16 24-20 16-19 FD

CONTINUATION FROM DIAGRAM

25-22 9-14(2) (may also arise from 9-14 22-17 11-15. 11-15 21-17 9-14 & 11-15 23-19 9-14) 29-25 5-9(1) 17-13 4-8 22-17 8-11 26-23 19-26 30-23 11-15 25-22 15-19 23-16 12-19 31-26 19-24 20-16 14-18 22-15 10-19 16-11 9-14 17-10 6-15 21-17 15-18 17-14 18-23 26-22 23-26 22-18 26-30 14-9. **DRAWN. D. LAFFERTY V D. OLDBURY. MWC P608**

VARIATION 1

19-24 32-28 5-9 28-19 9-13 26-23 4-8 30-26 8-11 19-16 12-19 23-7 2-11 26-23 11-15 20-16 15-18 22-15 13-29 23-19 14-18 16-11 10-14. **DRAWN. ANALYSIS BY S. GONOTSKY. S. GONOTSKY V L. GINSBERG MB P23**

VARIATION 2

4-8 29-25 9-14(3) 22-18 14-23 17-14 10-17 21-14 2-7 31-27 6-10 27-18 10-17 25-21 1-6 21-14 6-10 30-25 10-17 25-21 19-23 26-19 17-22 19-15 22-26 18-14 26-30 15-10. **DRAWN. D. LAFFERTY V D. OLDBURY. MWC P671**

VARIATION 3

10-15(5) 17-13 2-7 21-17 7-10(4) 20-16 19-23 26-19 15-24 22-18 12-19 17-14 10-17 25-22 17-26 30-16 8-12 16-11 6-10 13-6 10-15 6-2 15-22 32-28 24-27 31-24 1-6. **DRAWN. D. LAFFERTY V D. OLDBURY. MWC P625**

VARIATION 4

8-11 26-23 19-26 30-23 7-10 32-28 9-14 25-21 5-9 28-24 12-16 22-18 15-22 24-19 11-15 19-12 22-26 31-22 15-18. **DRAWN. R. MARTINS V J. WYLLIE. KE P170**

VARIATION 5

19-24 17-14 9-18 22-15 10-19 32-28 6-10 25-22 5-9(6) 22-18 9-14 18-9 1-5 9-6 2-9 20-16 9-14 26-23 19-26 28-19 5-9 31-22 9-13 21-17 14-21 22-18 13-17 18-15 8-11 16-7 12-16 19-12 10-19 7-3 19-23. **DRAWN. M. TINSLEY V N. BANKS. MB P23**

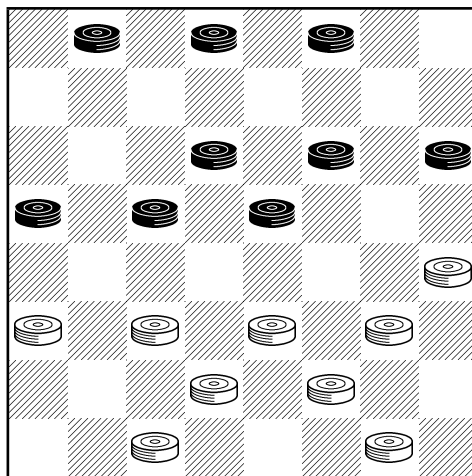
VARIATION 6

8-11 22-18 10-15(7) (10-14 also drs: M. Tinsley v A. Long) 26-23 15-22 23-7 2-11 28-19 1-6 21-17 6-10 17-13 11-15 30-26 15-24 26-17 24-28 31-26 28-32 26-22 32-27 22-18. **DRAWN. W. RYAN V N. RUBIN. MB PI9**

VARIATION 7

5-9 26-23 ... **DRAWN. S. LEVY V S. COHEN. MB P25**

KEY MIDGAME LANDING NUMBER 13



NOTES: This “Cross-Choice” landing can come up from numerous 3-move openings, from either side of the board, and has led to literally hundreds of wins in tournament play over the years. *By avoiding playing 9-13 (or 24-20) one can always avoid the weak side of this landing! A point to note.*

TR NO 1: 11-15 23-18 9-14 18-11 8-15 22-18 15-22 25-9 5-14 29-25 4-8 25-22 8-11 27-23 11-15 24-20 6-9 28-24 9-13 31-27 7-11 FD

TR NO 2: 9-14 22-18 11-15 18-11 8-15 23-18 NO 1 @ 6TH

TR NO 3: 9-14 24-20 11-16 20-11 8-15 22-18 15-22 25-9 5-14 29-25 4-8 25-22 6-9 28-24 8-11 24-20 9-13 27-24 11-15 31-27 7-11 FD

TR NO 4: 9-13 22-17 13-22 25-18 11-15 18-11 8-15 24-19 15-24 28-19 NO 3 @ 9TH CR

TR NO 5: 10-15 23-19 6-10 22-18 15-22 25-18 11-15 18-11 8-15 29-25 4-8 25-22 9-13 27-23 8-11 24-20 15-24 28-19 5-9 22-18 2-6 26-22 FD CR

TR NO 6: 10-15 22-18 15-22 (a perfectly valid run-up, LPC P95 notwithstanding) 25-18 9-13 29-25 11-15 18-11 8-15 24-19 15-24 28-19 4-8 25-22 8-11 22-18 6-10 27-24 2-6 26-22 5-9 24-20 FD CR

CONTINUATION FROM DIAGRAM

23-18 14-23 27-18 12-16(1) (best) 18-14 10-17 21-14 16-19 (2-6 loses by 30-25) 32-28 2-6 26-23 19-26 30-23 6-10 14-7 3-10 23-19 1-5 19-16 10-14 16-7 14-17. **DRAWN. D. OLDBURY V W. HELLMAN. MB P4**

VARIATION 1

2-7(2) 21-17 1-6 (1-5 loses) 26-23 6-9 32-28 10-14 17-10 7-14 24-19 15-24 28-19 14-17 30-26 17-21 19-15 3-8 15-10 21-25 10-6 25-30 6-1 9-14(30-25 loses by 18-15) 18-9 11-15 1-6 15-19. **DRAWN. W. RYAN V A. CAMERON. SCME P73**

VARIATION 2

2-6(3) (loses) 18-14 10-17 21-14 12-16 30-25 6-10 14-7 3-10 26-23 10-14 25-21 1-6 32-28 6-10 24-19 15-24 28-12 10-15 22-18 15-22 23-19. **WHITE WIN. ANALYSIS BY K. GROVER. LPC P97.**

Note: This variation represents the most common winning theme which is employed.

VARIATION 3

10-14(4) (loses) 18-9 1-5 9-6 2-9 26-23 9-14 32-28 3-7 24-19 15-24 28-19 7-10 22-18 5-9 30-26 13-17 19-15 10-19 23-7 14-30 21-5. **WHITE WIN. ANALYSIS BY K. GROVER. LPC P96**

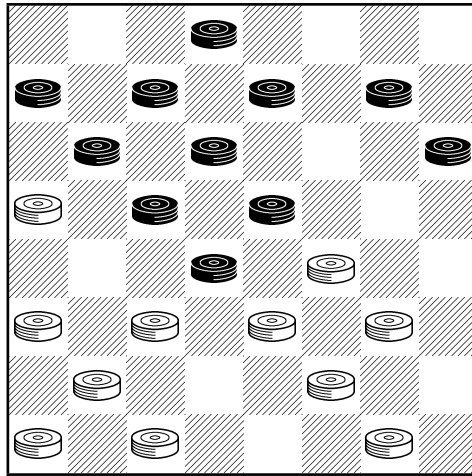
VARIATION 4

1-6(5) (loses) 18-14 10-17 21-14 3-8 14-10 6-9 26-23 9-14 23-19 14-18 10-7 18-25 30-21 15-18 7-3 18-23 32-28 23-27 19-16. **WHITE WIN. ANALYSIS BY R. FORTMAN. BC(2) P59**

VARIATION 5

1-5 (loses) (3-7 loses by 18-14 & 3-8 loses by 26-23) 18-14 10-17 21-14 12-16 32-28 16-19 14-10 5-9 10-6 9-14 6-1 14-18 1-5 18-25 30-21 2-6 5-9 6-10 26-22 19-23 9-6 3-8 6-9 23-26 21-17 26-30 9-14 8-12 14-16 12-19 22-18. **ANALYSIS BY P. KETCHUM. LPC P97**

KEY MIDGAME LANDING NUMBER 14



NOTES: Black is favoured in this landing, which can be brought up from a remarkable 12 3-move openings.

TR NO 1: 11-15 24-20 8-11 28-24 3-8 23-19 9-14 22-17 5-9 17-13 1-5 26-23 15-18 31-26
11-16 20-11 8-15 26-22 4-8 FD

TR NO 2: 10-15 24-20 7-10 28-24 3-7 NO 1 @5TH

TR NO 3: 10-14 24-20 6-10 22-17 11-15 17-13 1-6 28-24 8-11 23-19 3-8 NO 1 @ 11TH

TR NO 4: 10-14 24-20 11-15 22-17 6-10 NO 3 @ 5TH

TR NO 5: 10-14 24-20 11-16 20-11 8-15 28-24 6-10 22-17 4-8 23-19 15-18 17-13 1-6 26-23
8-11 31-26 11-15 26-22 3-8 FD

TR NO 6: 9-14 24-20 11-16 20-11 8-15 22-17 4-8 28-24 6-9 NO 5 @ 9TH

TR NO 7:9-14 24-20 11-15 22-17 8-11 28-24 3-8 23-19 NO 1 @ 8TH

TR NO 8: 9-14 24-20 5-9 28-24 11-15 23-19 7-11 22-17 3-7 NO 1 @ 9TH

TR NO 9: 10-15 22-17 7-10 24-20 3-7 17-13 9-14 28-24 5-9 23-19 NO 1 @ 10TH

TR NO 10: 9-14 24-20 10-15 22-17 7-10 28-24 3-7 23-19 NO 1 @ 8TH

TR NO 11: 9-14 22-17 6-9 24-20 NO 3 @ 4TH

TR NO 12: 9-14 22-17 5-9 17-13 1-5 24-20 11-15 28-24 8-11 23-19 3-8 NO 1 @ 11TH

CONTINUATION FROM DIAGRAM

21-17(2) 14-21 23-14 10-26 19-1(1) 9-14 30-23 21-30 1-6 2-9 13-6 7-11 6-2 (23-18 IS WEAK: N. BANKS V M. TINSLEY) 30-26 23-19 11-16 19-15. **DRAWN. A. LONG V M. TINSLEY. WTC P29**

This is the safest line for White to adopt.

VARIATION 1

19-3 8-11 30-23 21-30 32-28 9-14 24-20 (23-19 is weak by 11-16: W. Edwards v D. Oldbury) 11-15 27-24 30-26 23-19 6-10 29-25 14-18 3-8 26-22 25-21 18-23 8-11 22-18 21-17 23-27 17-14. **DRAWN. D. OLDBURY V E. FRAZIER. SW P20**

VARIATION 2

22-17 (not recommended) 8-11 25-22 18-25 29-22 11-16 22-18 15-22 19-15 10-28 17-1(3) 22-26 13-6 2-9 23-19 (1-6 is weak: M. Tinsley v N. Banks) 16-23 27-18 26-31 1-6 9-13 18-14 (18-15 is weak: A. Jordan v N. Banks) 7-11 6-10 11-16 10-15 16-20 15-19 20-24 32-27 28-32 27-20 32-27 19-24 12-16. **DRAWN. ANALYSIS BY J. SNODDY. WTC P29**

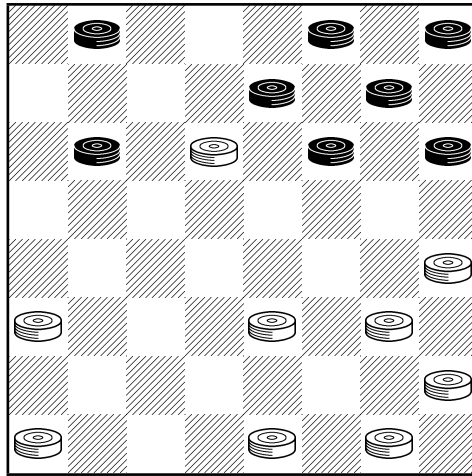
VARIATION 3

17-3 22-26 23-19 16-23 27-18 26-31 21-17 12-16 18-15 16-19 15-11 19-23 11-8 31-26 8-4 26-22 4-8 6-10 13-6 2-9 17-13 9-14 3-7 22-18 7-2 (8-11 loses: M. Tinsley v W. Hellman) 14-17 8-11 10-14 2-6. **DRAWN. ANALYSIS BY M. TINSLEY. WTC P29**

IMPORTANT TRANSPOSITION

11-15 24-20 8-11 28-24 4-8 23-19 9-14 22-17 15-18 26-23 11-15 17-13 8-11 31-26 5-9 now 21-17 is best, but 25-22 18-25 29-22 1-5 22-17 11-16 20-11 7-16 26-22 3-7 is Var 2 @ 6TH This is also available from **11-15 23-19 8-11** 22-17 4-8 17-13 (25-22 safer) 15-18 24-20 etc

KEY MIDGAME LANDING NUMBER 15



NOTES: White has a number of strong attacks at his command, and it will be seen that the use (or threat) of a number of 3 x 3 shots plays a vital part in Black's defence.

TR NO 1: 9-13 24-20 10-14 22-18 5-9 27-24 6-10 25-22 10-15 22-17 13-22 26-10 7-14
30-26 15-22 26-10 2-7 FD

TR NO 2: 9-13 24-20 5-9 22-18 10-15 25-22 6-10 27-24 10-14 NO 1 @ 9TH

TR NO 3: 9-13 22-18 10-15 25-22 6-10 24-20 5-9 27-24 10-14 NO 1 @ 9TH

CONTINUATION FROM DIAGRAM

10-6(4) 1-10 31-26(1) 10-15 24-19 15-24 28-19 11-15 19-10 7-14 29-25 3-7 25-22 9-13 (7-10
loses) 22-18 14-17 21-14 7-10 14-7 12-16 20-11 8-31. **DRAWN. W. EDWARDS V R.
PASK. 1984 BRITISH**

VARIATION 1

29-25(3) 10-15 23-19 9-13 19-10 7-14 24-19(2) 14-18 19-15 3-7 32-27 7-10 15-6 18-23 27-18 11-16 20-11 8-29 6-2 4-8 2-6 8-11 6-10 29-25. **DRAWN. P. MCCARTHY V T. WATSON. 1985 SCOTTISH**

VARIATION 2

31-26 14-18 26-23 18-27 32-23 11-15 25-22 3-7 23-18 7-11 21-17 12-16 17-14 16-19 14-10 13-17
22-13 15-22 24-15 11-18. **DRAWN. ANALYSIS BY F. TESCHELEIT. MP P37**

VARIATION 3

23-19 10-15 19-10 7-14 24-19 9-13 32-27 13-17 29-25 14-18 21-14 18-23 27-18 11-16 20-11 8-29
19-15 4-8 15-10 8-11 10-6 11-15 6-2 15-18 2-6 18-23 6-10 29-25 14-9 12-16. **DRAWN. M.
TINSLEY V L. LEVITT. CTTW P29**

VARIATION 4

24-19(7) 7-14 31-26 3-7 32-27 1-5 19-16(6) 12-19 23-16 8-12 27-23 12-19 23-16 14-17 21-14
9-18 26-22 18-25 29-22 11-15 16-11(5) 7-16 20-11 5-9 28-24 9-14 11-7 14-18 24-19 15-24 22-15
4-8. **DRAWN. M. TINSLEY V R. FORTMAN. CTTW P30**

VARIATION 5

22-17 5-9 17-13 9-14 13-9 7-10 9-6 14-17 6-2 10-14 2-6 15-18 6-9 17-21 9-13 18-23 13-17 14-18
16-11 23-27. **DRAWN. R. PASK V W. EDWARDS. 1984 BRITISH**

VARIATION 6

29-25 14-17 21-14 9-18 23-14 7-10 14-7 11-16 20-11 8-31 26-22. **DRAWN. H. DEVLIN V
W. EDWARDS. 1988 HOME INTERNATIONALS**

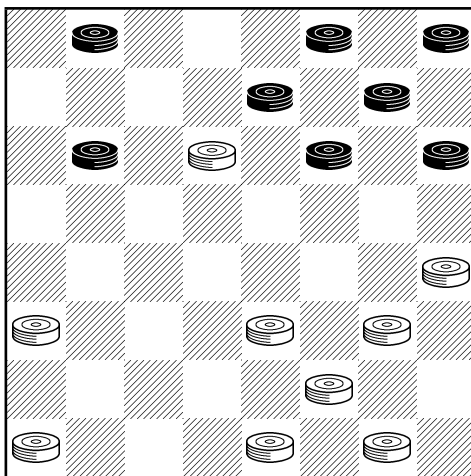
VARIATION 7

29-25 7-14 25-22 1-5 31-26 9-13 24-19 3-7 28-24(8) 7-10 22-18 11-16 18-9 5-14 20-11 8-15
32-28 15-18 19-16 18-27 26-22 12-19 24-6 4-8 6-2 8-11 2-6. **DRAWN. M. TINSLEY V
G. LeCLAIR. CTTW P30**

VARIATION 8

32-27 14-17 21-14 7-10 14-7 11-16 20-11 8-31 7-2 12-16 2-7 4-8 22-17 13-22 26-17. **DRAWN.
P. MCCARTHY V H. DEVLIN. 1985 ENGLISH**

KEY MIDGAME LANDING NUMBER 16



NOTES: White has a host of attacking lines at his disposal, and Black must play with great care to obtain his draw. Variation 1 covers a line which has received a lot of attention recently, and should be carefully noted. Comparisons should be made with Key Landing #15, which is a companion piece.

TR NO 1: 9-13 24-20 10-14 28-24 5-9 22-18 6-10 25-22 10-15 22-17 13-22 26-10 7-14 30-26 15-22 26-10 2-7 FD

TR NO 2: 9-13 24-20 5-9 22-18 10-15 25-22 6-10 28-24 10-14 NO 1 @ 9TH

TR NO 3: 9-13 22-18 10-15 25-22 6-10 24-20 5-9 28-24 10-14 NO 1 @ 9TH

CONTINUATION FROM DIAGRAM

10-6(4) 1-10 29-25(2) 10-14 25-22 7-10 32-28(1) 11-15 24-19 15-24 28-19 8-11 20-16 11-20 22-18 4-8 18-15 12-16 15-6 8-12 19-15 16-19 23-16 12-19 6-1 19-23 27-18 14-23 1-6 9-14 6-10 14-18 10-14 3-8 15-10 8-12 10-7 12-16 7-3 20-24 3-7 16-20 7-11 24-27 31-24 20-27 11-15 18-22 14-18 22-26 18-22 27-31 15-18. **DRAWN. L. LEVITT V M. TINSLEY. CTTW P30**

VARIATION 1

24-19 11-16 20-11 8-24 27-20 3-7 22-18 7-11 31-26 11-16 20-11 10-15 26-22 15-19 23-16 14-23. **DRAWN. A. LONG V E. ZUBER. EDJ 26. 1 P8**

VARIATION 2

21-17(3) 10-14 17-10 7-14 29-25 9-13 25-22 3-7 32-28 11-15 23-19 7-10 27-23 14-17 23-18 17-26 18-11 8-15 31-22 4-8 20-16 10-14 19-10 12-19 24-15 14-18. **DRAWN. J. ALEXANDER V M. LIBBER. 2ND INT P115**

VARIATION 3

31-26 9-14 26-22 10-15 29-25 15-18 22-15 11-18 23-19 8-11 19-15 12-16 15-8 4-11 27-23 18-27 32-23 14-18 23-14 7-10 14-7 3-10 25-22 10-15 21-17 16-19 17-14 19-28 14-10. **DRAWN. ANALYSIS BY F. TESCHELEIT. MP P37**

VARIATION 4

29-25 7-14 25-22 1-5 22-17(5) 14-18 23-14 9-18 27-23 18-27 32-23 11-15 17-14 3-7 21-17 15-18 24-19 18-27 31-24 8-11 17-13 4-8 13-9 7-10 14-7 5-14 7-2 14-18 19-15 18-23 15-10 12-16. **DRAWN. W. GARDENER V S. COHEN. KE P414**

VARIATION 5

24-19 9-13 27-24 3-7 32-28 7-10 23-18 14-23 19-16 12-19 24-6. **DRAWN. A. LONG V M. TINSLEY. CTTW P26**

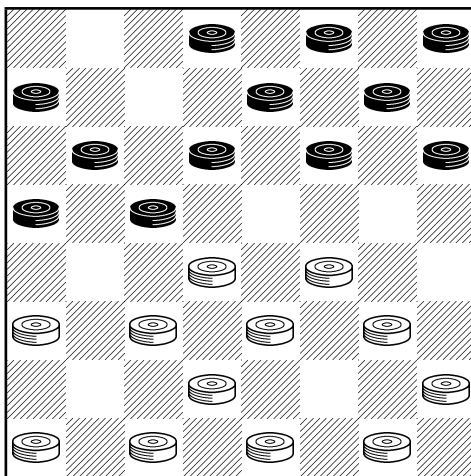
PROPOSED CORRECTION OF BASIC CHECKERS

Played in the 9TH USA v GB Postal Match

BLK: R. Scott (USA); WH: D. Hyde. (GB)

9-13 24-20 10-14 28-24 5-9 22-18 6-10 25-22 10-15 22-17 13-22 26-10 7-14 30-26 15-22 26-10 2-7 29-25 7-14 25-22 1-5 24-19 14-18 (9-13 safest) 22-15 11-18 23-14 9-18 27-23 18-27 32-23 5-9 21-17 9-13 17-14 3-7 31-26 13-17 14-9 17-21 (may lose; 17-22 26-17 7-11 DRS) 9-5 21-25 5-1 25-30 1-6 7-11 19-16 12-19 23-7 30-23 7-3 8-12 6-10 23-19 3-7. **WHITE WIN.**

KEY MIDGAME LANDING NUMBER 17



NOTES: The above position arises out of at least 9 3-move openings, and is known as the 'Paxton' landing. The Black defence requires very careful handling on many lines of play, and as such the landing should be avoided (with Black!); TR NO 1 is an exception.

TR NO 1: 9-13 24-19 10-14 22-18 5-9 25-22 6-10 27-24 1-5 FD

TR NO 2: 9-13 22-18 6-9 25-22 1-6 23-19 10-14 (11-15 best) 27-23 6-10 FD

TR NO 3: 9-13 23-19 6-9 27-23 9-14 22-18 5-9 (11-15 best) 25-22 1-5 FD

TR NO 4: 9-13 24-19 6-9 27-24 into NO 3 @ 4TH

TR NO 5: 9-13 23-19 10-14 27-23 6-10 (11-16 best) into NO 3 @ 5TH

TR NO 6: 9-13 23-19 5-9 22-18 10-14 (11-15 best) 27-23 6-10 25-22 1-5 FD

TR NO 7: 9-13 24-19 5-9 22-18 10-14 (11-15 best) into NO 1 @ 5TH

TR NO 8: 10-14 24-19 6-10 27-24 9-13 into NO 3 @ 5TH

TR NO 9: 10-14 23-19 6-10 27-23 9-13 into NO 3 @ 5TH

CONTINUATION FROM DIAGRAM

32-27(1) 11-15 18-11 8-15 30-25 7-11 22-18 15-22 25-18 3-7 18-15 11-18 19-16 12-19 24-6 14-17 21-14 18-22 26-17 9-18 23-14 2-18 17-14 18-22. **DRAWN. ANALYSIS BY W. HELLMAN. BC(1) P51**

VARIATION 1

24-20(2) (This position can also arise from **9-13 24-20 5-9** & **9-13 24-20 10-14**) 11-15 18-11 8-24 28-19 14-17 21-14 9-27 32-23 4-8 29-25 8-11 22-18 (if 23-18 then 13-17! DRS) 10-14 18-9 5-14 25-22 14-17 22-18 17-22 26-17 13-22 19-15 12-16 15-8 3-12 20-11 7-16 18-15 16-19 23-16 12-19 15-11 19-24 11-8 24-28 8-3 28-32 3-8 2-7 8-3 7-10 3-7 10-14 7-10 14-17 10-15 17-21. **DRAWN. W. HELLMAN V B. CASE. MC P54**

VARIATION 2

29-25(3) 11-15 18-11 8-15 24-20 15-24 28-19 14-17 21-14 9-27 32-23 4-8 22-18 (if 23-18 then 10-14 DRS) 8-11 25-22 10-14 18-9 5-14 22-18 14-17 19-15 11-16 20-11 7-16 18-14 17-22 26-17 13-22 14-9 16-20 9-5 12-16 5-1 20-24 1-5 16-20 5-9 24-27 31-24 20-27 23-19 27-32 9-14 32-27 14-18 2-6 18-25 27-23. **DRAWN. ANALYSIS BY W. HELLMAN. TNC P66**

VARIATION 3

22-17(4) 13-22 26-17 11-15 18-11 8-15 17-13 14-17 13-6 2-9 21-14 9-27 32-23 7-11 30-26 5-9 24-20 15-24 28-19 11-15 19-16. **DRAWN. ANALYSIS BY W. HELLMAN. TNC P67**

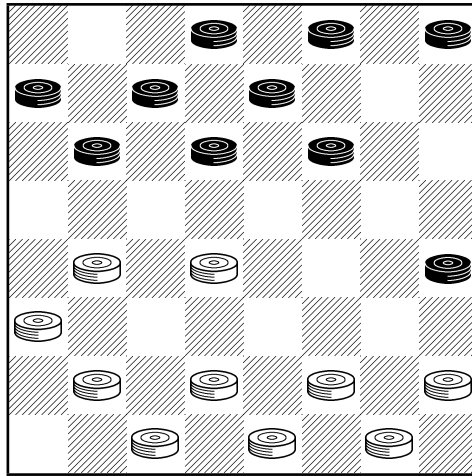
VARIATION 4

19-15(5) 10-19 24-15 11-16 22-17 13-22 26-10 7-14 15-10 16-19 23-16 12-19 18-15 9-13 30-26 8-11 15-8 4-11 29-25 11-15 32-27 3-8 25-22 14-18. **DRAWN. ANALYSIS BY E. FRAZIER. TNC P65**

VARIATION 5

30-25 (31-27! is another possibility) 11-15 18-11 8-15 22-17 13-22 25-11 7-16 24-20 3-8 20-11 8-24 28-19 4-8 19-16 12-19 23-16 8-11 16-7 2-11 29-25 10-15 25-22 14-18 22-17 9-13 17-14. **DRAWN. ANALYSIS BY E. FRAZIER. TNC P66**

KEY MIDGAME LANDING NUMBER 18



NOTES: The above position arises from 3 of the 3-move openings, and permits White a wide variety of attacks. Over the years however the Black defences have been meticulously honed, and the well-posted player should have little to fear.

TR NO 1: 12-16 21-17 16-19 24-15 10-19 23-16 11-20 25-21 8-11 22-18 6-10 29-25 1-6 FD

TR NO 2: 12-16 22-17 16-19 24-15 10-19 (11-18 easier) 23-16 11-20 25-22 NO 1 @ 8TH

TR NO 3: 12-16 22-18 16-19 24-15 10-19 23-16 11-20 25-22 8-11 22-17 NO 1 @ 10TH

CONTINUATION FROM DIAGRAM

17-13(5) 10-15 25-22 7-10 26-23 3-7 (or 4-8 28-24 8-12 23-19 3-7 into Var 1) 28-24(3) 4-8 24-19(1) 15-24 32-28 9-14 28-19 14-17 21-14 10-26 31-22 6-10 (8-12? loses by 30-25) 22-17 8-12 30-25 11-15 18-11 7-16 25-21 5-9 13-6 2-9 17-13 10-14 13-6 14-18 23-14 16-32. **DRAWN.**
M. TINSLEY V A. LONG. WCC2 P76

VARIATION 1

23-19 8-12 27-23(2) 20-27 31-24 9-14 18-9 5-14 32-28 6-9 13-6 2-9 21-17 14-21 23-18 9-13
24-20 15-24 28-19 10-14 18-9 7-10 22-18 12-16 19-12 10-14. **DRAWN. M. TINSLEY V**
A. LONG. WTC P21

VARIATION 2

31-26 11-16 18-11 16-23 27-18 20-27 32-23 7-16 22-17 16-19 23-16 12-19 26-23 19-26 30-23 9-14 18-9 5-14 23-19 14-18. **DRAWN. N. BANKS V A. LONG. MB P26**

VARIATION 3

23-19(4) 15-24 28-19 11-15 18-11 7-23 27-18 10-14 31-27 14-23 27-18 6-10 13-6 2-9 22-17 9-14 18-9 5-14 17-13 10-15 13-9 20-24 9-6 15-18. **DRAWN. A. LONG V M. TINSLEY. WTC P31**

VARIATION 4

30-26 4-8 23-19 15-24 28-19 8-12 26-23 11-15 18-11 7-16 31-26 10-14 22-18 2-7 32-28 6-10 13-6 7-11 18-9 5-14 26-22 11-15 27-24 20-27 6-1 15-24 28-19 27-32! 22-17 16-20 17-13 20-24 13-9 10-15 19-10 32-27. **DRAWN. A. LONG V M. TINSLEY. WTC P22**

VARIATION 5

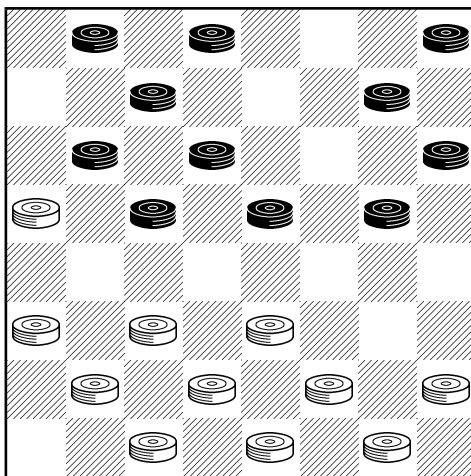
17-14 10-17 21-14 3-8! (equalizes) 26-23 11-15 18-11 8-15 31-26 9-18 23-14 6-9 26-23 9-18 23-14 2-6 30-26 4-8 26-22 6-9 22-17 9-18 27-24 20-27 32-14 15-19 25-21 7-11 14-9 5-14 17-10. **DRAWN. R. STEWART V R. JORDAN. 1ST SCOT. P29**

ADDITIONAL NOTE

The following remarkable game was played in the 1984 British Open between Asa Long (Black) and Charles Walker (White).

12-16 22-18 16-19 24-15 10-19 23-16 11-20 25-22 6-10 29-25 1-6 27-23 8-11 32-27 10-15! 18-14 9-18 23-14 6-9 26-23 9-18 23-14 7-10 14-7 3-10 22-17 5-9 30-26 9-14 17-13 2-6 25-22 4-8 (into loss given in trunk CR!) 26-23 11-16? (15-18 BW) 22-18! 15-22 31-26! 22-31 21-17! 14-21 23-18 31-24 28-3 10-15. **DRAWN.**

KEY MIDGAME LANDING NUMBER 19



NOTES: White is powerful, and Black must time his moves very carefully to escape unscathed.

TR NO 1: 9-14 24-20 10-15 22-17 7-10 25-22 3-7 29-25 5-9 17-13 11-16 20-11 7-16 FD

TR NO 2: 9-14 22-17 5-9 17-13 11-15 25-22 7-11 24-20 3-7 29-25 NO 1 @ 10TH

TR NO 3: 11-16 24-20 7-11 21-17 9-14 25-21 3-7 29-25 5-9 17-13 11-15 20-11 7-16 FD

TR NO 4: 10-15 22-17 7-10 25-22 9-14 24-20 NO 1 @ 6TH

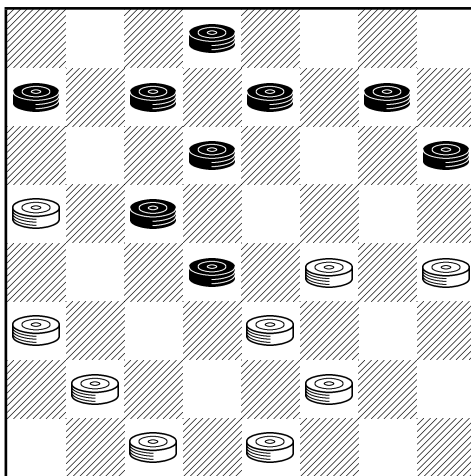
CONTINUATION FROM DIAGRAM

23-19 15-24 28-19 16-23 26-19 8-11 30-26 11-15 22-17 15-24 27-20 4-8 (2-7 is natural, but a loser) 26-23 8-11 32-28(1) 2-7 31-26 11-15 20-16 12-19 23-16 15-18 26-22 18-23 22-18 7-II 16-7 23-26 18-15 10-19 17-10 6-15 13-6 1-10 7-2 19-24 28-19 15-24. **DRAWN. B. CASE V W. HELLMAN. ABC P72**

VARIATION 1

23-19 14-18 17-14 10-17 21-5 6-10 (18-23 loses by 13-9 6-13 25-22) 31-27 11-15 27-24 18-23 25-22 2-6 22-17 15-18 20-16 10-14 17-10 6-15 19-10 12-28. **DRAWN. ANALYSIS BY E. HUNT. MEC P153**

KEY MIDGAME LANDING NUMBER 20



NOTES: White holds a distinct advantage in this landing, which arises from 3 of the 3-move openings.

TR NO 1: 10-15 21-17 15-18 22-15 11-18 23-14 9-18 24-20 8-11 17-13 7-10 25-21 10-14 28-24 4-8 29-25 3-7 24-19 6-10 26-23 11-15 32-28 15-24 28-19 1-6 FD

TR NO 2: 10-14 24-20 14-18 22-15 11-18 23-14 9-18 21-17 NO 1 @ 8TH

TR NO 3: 10-14 24-19 14-18 22-15 11-18 23-14 9-18 21-17 8-11 17-13 7-10 25-21 10-14 29-25 4-8 26-23 3-7 28-24 6-10 24-20 NO 1 @ 20TH

CONTINUATION FROM DIAGRAM

30-26(2) 7-11 19-15 10-19 23-7 2-11 26-22 11-15 22-17(1) 6-10 13-9 8-11 27-24 12-16 9-6 16-19 6-2 19-28 2-7 5-9 7-16 9-13 25-22 18-25 16-11 13-22 11-9. **DRAWN. D. OLDBURY V A. HUGGINS. SW P132**

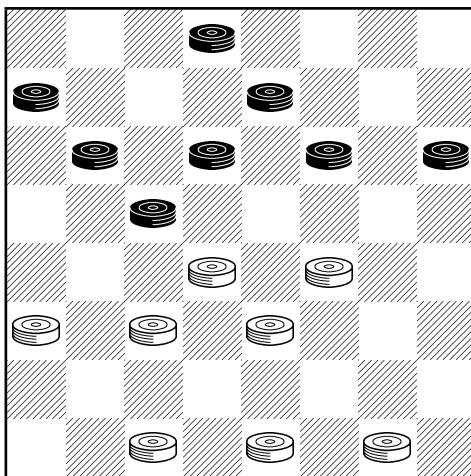
VARIATION 1

27-24 18-23 22-17 6-10 13-9 23-27 9-6 27-32 6-2 8-11 2-6 12-16 31-27 32-23 24-19 15-24 6-8 14-18 20-11 23-26. **DRAWN. ANALYSIS BY R. FORTMAN. MEC P64**

VARIATION 2

31-26 8-11 19-16 12-19 23-16 10-15 26-22 6-10 16-12 11-16 20-11 7-16 12-8 16-19 8-3 19-23 27-24 23-26 30-23 18-27. **DRAWN. M. CHAMBLEE V S. WESLOW. BC(3) P55**

KEY MIDGAME LANDING NUMBER 21



NOTES: White can choose from several attacks, but Black can defend fairly easily against all of them.

TR NO 1: 9-14 24-20 11-15 22-18 15-22 25-9 5-14 29-25 7-11 25-22 6-9 27-24 3-7 24-19 11-16 20-11 8-24 28-19 4-8 22-18 8-11 26-22 1-5 FD

TR NO 2: 9-14 24-20 10-15 22-18 15-22 25-9 5-14 29-25 7-10 NO 1 @ 9TH

TR NO 3: 9-13 24-20 10-14 22-17 13-22 25-9 5-14 29-25 7-10 NO 1 @ 9TH

CONTINUATION FROM DIAGRAM

32-28(1) 11-15 18-11 7-16 22-17 9-13 28-24 13-22 24-20 14-18 23-7 2-11 19-15 11-18 20-11 18-23 11-7 12-16 7-2 16-20 2-6 23-27 31-24 20-27 6-10 5-9 10-15 9-14 15-10 27-31 10-26 31-22.

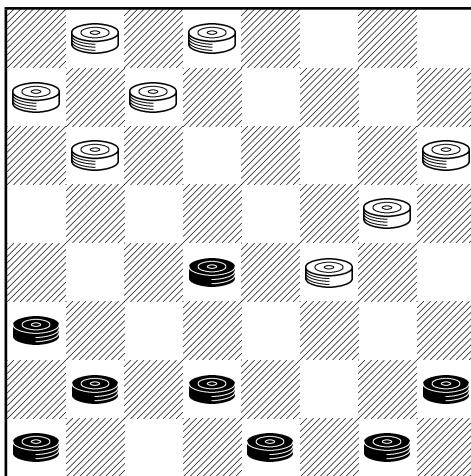
DRAWN. W. HELLMAN V B. CASE. MC P44

VARIATION 1

30-25 9-13 18-9 5-14 22-18 14-17 21-14 10-17 25-21 17-22 19-15 11-16 15-11 16-19 23-16 12-19 11-8 7-10. **DRAWN. D. LAFFERTY V M. TINSLEY. CTTW P53**

Rule of Thumb: Against 32-27 & 32-28 play 11-15; against 30-25, 30-26 & 31-26 play 9-13.

KEY MIDGAME LANDING NUMBER 22



NOTES: White is quite strong, but recent improvements by Karl Albrecht have eased Black's defensive task.

TR NO 1: 11-16 22-17 7-11 17-14 10-17 21-14 9-18 23-14 3-7 25-21 11-15 29-25 16-19 25-22 6-9 22-17 9-18 26-23 19-26 30-14 FD

TR NO 2: 10-15 22-17 7-10 17-14 10-17 21-14 9-18 23-14 3-7 25-21 11-16 NO 1 @ 11TH

TR NO 3: 11-16 22-18 7-11 18-14 NO 1 @ 4TH

CONTINUATION FROM DIAGRAM

7-11 14-9(2) 5-14 17-10 11-16 21-17 (27-23 into V2) 15-18 27-23 18-27 32-23 16-20 23-19(1) 20-27 31-24 8-11 24-20 11-15 17-13 15-24 28-19 4-8 10-7 2-11 13-9 1-5 9-6 5-9 6-2 9-13 2-6 11-15 19-10 8-11. **DRAWN. M. TINSLEY V D. LAFFERTY. WCC2 P31**

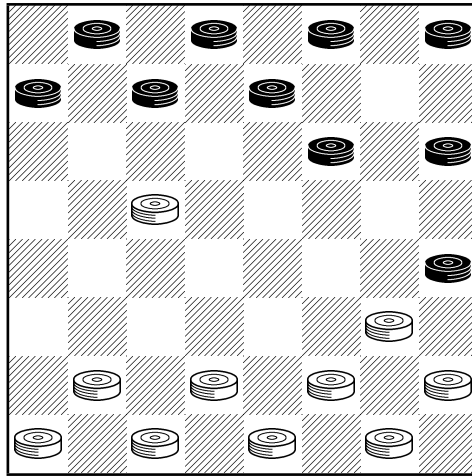
VARIATION 1

24-19 20-24 19-15 2-6 28-19 8-11 15-8 6-24 8-3 4-8 17-14 8-11. **DRAWN. D. LAFFERTY V M. TINSLEY. WCC2 P23**

VARIATION 2

27-23 11-16 14-9 5-14 17-10 16-19 23-16 12-19 31-26 8-12 21-17 4-8 17-13 2-6 10-7 15-18 24-15 6-9 13-6 1-19 7-3 18-23 28-24 23-30 24-15 30-26 32-27 26-22. **DRAWN. D. LAFFERTY V M. TINSLEY. WCC2 P32**

KEY MIDGAME LANDING NUMBER 23



NOTES: White holds the advantage, but Black's defences are well defined against all attacks.

TR NO 1: 11-16 22-17 16-20 17-14 9-18 23-14 10-17 21-14 8-11 FD

TR NO 2: 11-16 22-18 16-20 18-14 NO 1 @ 4TH

TR NO 3: 11-16 **22-17** 8-11 17-14 9-18 23-14 10-17 21-14 16-20 FD

TR NO 4: 11-16 22-18 8-11 18-14 NO 3 @ 4TH

TR NO 5: 12-16 22-17 16-20 17-14 9-18 23-14 10-17 21-14 8-12 FD

TR NO 6: 12-16 22-18 16-20 18-14 NO 5 @ 4TH

CONTINUATION FROM DIAGRAM

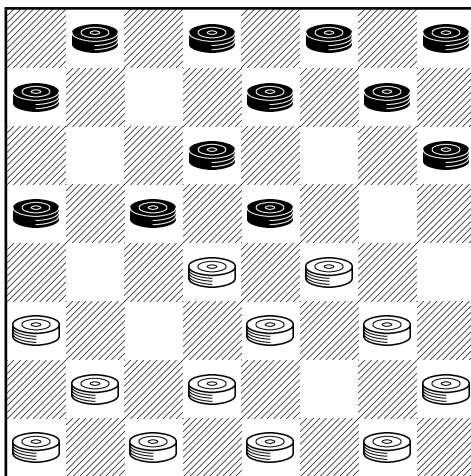
25-22 (24-19 also good) 11-15 24-19 15-24 28-19 4-8 29-25 8-11 25-21(1) 11-16 26-23 6-9 22-18
1-6 31-26 (if 21-17 then 9-13; if 30-25 then 6-10) 7-11 19-15 16-19 23-7 3-19 26-23 19-26 30-23.

DRAWN. W. HELLMAN V B. CASE. ABC P80

VARIATION 1

22-18 11-15 18-11 7-23 27-18 12-16 25-22 2-7 14-10 7-23 26-12 6-10 31-27 5-9 30-25 10-15
27-23 9-14 25-21 20-24 22-17 24-27 17-10 27-31 32-28 31-26 23-19 15 24 28-19 26-23 19-16
23-18 16-11 18-15 10-7 15-8 21-17 3-10 12-3. **DRAWN. E. BRUCH V L. TAYLOR.**
ACFB 177 P101

KEY MIDGAME LANDING NUMBER 24



NOTES: White is strongly favoured in this landing, which arises from 6 of the 3-move openings.

TR NO 1: 9-13 23-19 6-9 27-23 9-14 22-18 11-15 FD

TR NO 2: 9-13 23-19 10-14 27-23 6-10 NO 1 @ 5TH

TR NO 3: 9-13 24-19 6-9 27-24 NO 1 @ 4TH

TR NO 4: 9-13 24-19 10-14 27-24 6-10 NO 1 @ 5TH

TR NO 5: 10-14 23-19 6-10 27-23 9-13 NO 1 @ 5TH

TR NO 6: 10-14 24-19 6-10 27-24 9-13 NO 1 @ 5TH

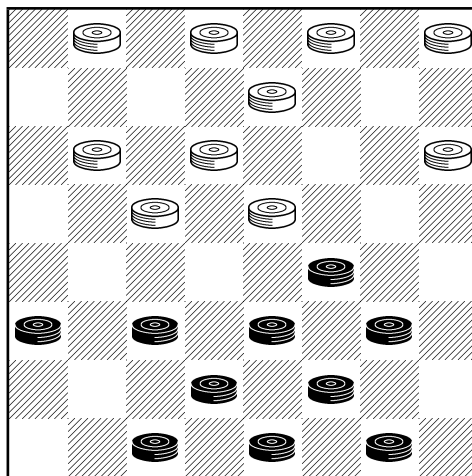
CONTINUATION FROM DIAGRAM

18-9(1) 5-14 25-22 7-11! (8-11 loses) 30-25 1-5 32-27 11-16! (3-7 loses) 22-18 15-22 25-9 5-14 19-15 10-19 24-15 2-6 29-25 16-19 23-16 12-19 27-23 8-11 23-7 3-19 25-22 6-10 22-17 13-22 26-17 14-18 17-14 10-17 21-14. **DRAWN. E. HUNT V A. LONG. MB P83**

VARIATION 1

18-11 8-15 23-18 (24-20 into #7) 15-22 25-9 5-14 19-16 12-19 24-6 1-10 29-25 4-8 28-24 8-11 26-23 11-15 32-27 7-11 25-22 3-8 30-26 14-18 23-7 15-19 24-15 11-25 7-3 25-30 3-12 30-32 12-16 2-7 16-19 7-11 31-26 32-27 26-22 27-31 19-23. **DRAWN. B. CASE V W. HELLMAN. MC P54**

KEY MIDGAME LANDING NUMBER 25



NOTES: This landing arises from at least 5 of the 3-move openings, and is evenly balanced.

TR NO 1: 9-14 22-18 11-15 18-11 8-15 25-22 5-9 24-19 15-24 28-19 4-8 22-18 8-11 27-24 FD

TR NO 2: 9-14 24-19 11-15 28-24 8-11 22-18 15-22 25-9 5-14 NO 1 CR @ 10TH

TR NO 3: 9-13 24-19 11-15 28-24 6-9 22-17 13-22 25-11 8-15 29-25 9-14 25-22 5-9 FD CR

TR NO 4: 9-13 24-19 5-9 28-24 11-15 22-17 13-22 25-11 8-15 29-25 9-14 NO 1 CR @ 12TH

TR NO 5: 9-13 24-19 6-9 28-24 11-15 NO 3 @ 5TH

CONTINUATION FROM DIAGRAM

10-15 19-10 6-22 26-10 7-14 29-25 1-5(1) 23-19! 3-7 (2-7 loses: Frazier v Hellman) 25-22 9-13 24-20 11-16 20-11 7-23 31-26 23-27 32-23 2-7. **DRAWN. ANALYSIS BY M. CHAMBLEE. 1967 WCMB P51**

VARIATION 1

11-15 23-19! 2-6 19-10 6-15 30-26 14-18 21-17 3-7 17-14 1-5 32-27 7-11 24-19 15-24 27-20 11-15 14-10 18-23-26-19 15-24 10-6 9-14 6-2 5-9 2-6 9-13 25-22 14-17 6-10 17-26 31-22 24-27 10-14 27-31. **DRAWN. ANALYSIS BY M. CHAMBLEE. 1967 WCMB P51**

Index to 3-Move Openings Covered

Opening	Page(s)
9-13 22-17 13-22	26
9-13 22-18 6-9	34
9-13 22-18 10-15	30,32
9-13 23-18 5-9	24
9-13 23-19 5-9	14,34
9-13 23-19 6-9	14,34,43
9-13 23-19 10-14	14,16,22,34,43
9-13 23-19 11-16	22
9-13 24-19 5-9	34,44
9-13 24-19 6-9	14,34,43,44
9-13 24-19 10-14	14,16,34,43
9-13 24-19 11-15	44
9-13 24-20 5-9	30,32,35
9-13 24-20 10-14	30,32,35,40
9-14 22-17 5-9	28,38
9-14 22-17 6-9	28
9-14 22-17 11-15	9,23,24
9-14 22-17 11-16	4
9-14 22-18 11-15	13,26,44
9-14 22-18 11-16	9
9-14 23-19 5-9	17
9-14 23-19 11-16	23
9-14 24-19 5-9	17
9-14 24-19 11-15	13,17,44
9-14 24-19 11-16	9
9-14 24-19 5-9	28
9-14 24-18 10-15	28,38,40
9-14 24-20 11-15	28,40
9-14 24-20 11-16	26,28

10-14 22-17 7-10	16
10-14 22-18 6-10	13
10-14 22-18 7-10	18
10-14 22-18 11-15	13
10-14 22-18 11-16	18
10-14 22-18 12-16	18
10-14 23-19 6-10	14,34,43
10-14 23-19 7-10	16
10-14 23-19 11-16	21
10-14 24-19 6-10	14,34,43
10-14 24-19 7-10	16,18
10-14 24-19 11-16	19
10-14 24-19 14-18	39
10-14 24-20 6-10	14,28
10-14 24-20 11-15	28
10-14 24-20 11-16	16,24,28
10-14 24-20 14-18	39
10-15 21-17 11-16	7
10-15 21-17 15-18	39
10-15 22-17 7-10	28,38,41
10-15 22-18 15-22	26
10-15 23-18 11-16	24
10-15 23-19 6-10	26
10-15 23-19 7-10	16,23
10-15 24-20 7-10	28
11-15 21-17 8-11	9
11-15 21-17 9-14	9,23,24
11-15 22-17 8-11	23,24,29
11-15 22-18 15-22	26
11-15 23-18 9-14	26
11-15 23-19 8-11	23,24,29
11-15 23-19 9-13	16
11-15 23-19 9-14	13,17,23,24
11-15 24-19 15-24	9
11-15 24-20 8-11	28
11-15 24-20 12-16	24

11-16 21-17 8-11	5,7,11
11-16 21-17 9-14	4
11-16 21-17 16-20	5,7,11
11-16 22-17 7-11	41
11-16 22-17 8-11	7,42
11-16 22-17 16-20	4,42
11-16 22-18 7-11	41
11-16 22-18 8-11	4,12,18,42
11-16 22-18 16-20	4,18,42
11-16 23-18 8-11	7,12,18
11-16 23-18 9-14	7
11-16 23-18 10-14	19,21
11-16 23-18 16-20	7,18,21
11-16 24-19 8-11	9,12,18
11-16 24-19 16-20	9,18,21
11-16 24-20 7-11	38
12-16 21-17 9-14	11
12-16 21-17 16-19	36
12-16 21-17 16-20	5,7,11
12-16 22-17 16-19	36
12-16 22-17 16-20	42
12-16 22-18 16-19	36
12-16 22-18 16-20	4,12,18,42
12-16 23-18 16-20	7,12,18
12-16 24-19 16-20	9,12,18

Notes & Improvements

Addendum: FEN Notation for the Diagrams

1. W:W17,21,23,24,26,27,28,29,30,31,32:B1,2,3,4,6,7,10,11,12,14,20.
2. B:W32,31,28,27,26,25,24,23,22,21,13:B20,15,14,12,11,10,8,6,3,2,1.
3. B:W32,31,30,27,26,23,22,21,19,13:B20,14,12,11,10,7,6,3,2,1.
4. B:W32,31,30,27,26,25,18,16,13:B20,17,11,10,7,6,3,2,1.
5. W:W17,19,21,23,25,27,28,29,30,31,32:B1,2,3,6,7,8,10,11,12,14,20.
6. B:W32,31,30,28,26,25,24,23,21,19:B14,12,11,10,7,6,4,3,2,1.
7. W:W19,20,21,23,26,29,30,31,32:B2,3,6,7,10,11,12,13,14.
8. W:W19,21,22,23,24,26,28,30,31,32:B1,2,3,4,6,10,11,12,14,15.
9. W:W17,18,19,21,23,25,27,28,29,30,31,32:B1,2,3,4,5,6,9,10,11,12,14,20.
10. W:W15,19,21,22,25,26,27,28,29,30,31,32:B1,2,3,4,5,6,8,9,10,12,14,20.
11. W:W13,19,21,22,23,24,27,28,29,30,31,32:B1,2,4,6,7,8,9,10,12,14,15,16.
12. W:W17,20,21,25,26,29,30,31,32:B1,2,4,5,6,9,10,12,19.
13. W:W20,21,22,23,24,26,27,30,32:B1,2,3,10,11,12,13,14,15.
14. W:W13,19,21,22,23,24,25,27,29,30,32:B2,5,6,7,8,9,10,12,14,15,18.
15. W:W10,20,21,23,24,28,29,31,32:B1,3,4,7,8,9,11,12.
16. W:W10,20,21,23,24,27,29,31,32:B1,3,4,7,8,9,11,12.
17. W:W18,19,21,22,23,24,26,28,29,30,31,32:B2,3,4,5,7,8,9,10,11,12,13,14.
18. W:W17,18,21,25,26,27,28,30,31,32:B2,3,4,5,6,7,9,10,11,20.
19. W:W13,21,22,23,25,26,27,28,30,31,32:B1,2,4,6,8,9,10,12,14,15,16.
20. W:W13,19,20,21,23,25,27,30,31:B2,5,6,7,8,10,12,14,18.
21. W:W18,19,21,22,23,30,31,32:B2,5,7,9,10,11,12,14.
22. B:W32,31,28,27,24,21,17,14:B15,12,8,7,5,4,2,1.
23. W:W14,24,25,26,27,28,29,30,31,32:B1,2,3,4,5,6,7,11,12,20.
24. W:W18,19,21,23,24,25,26,28,29,30,31,32:B1,2,3,4,5,7,8,10,12,13,14,15.
25. B:W32,31,30,29,26,24,23,21,19,18:B14,12,11,10,9,7,6,3,2,1.